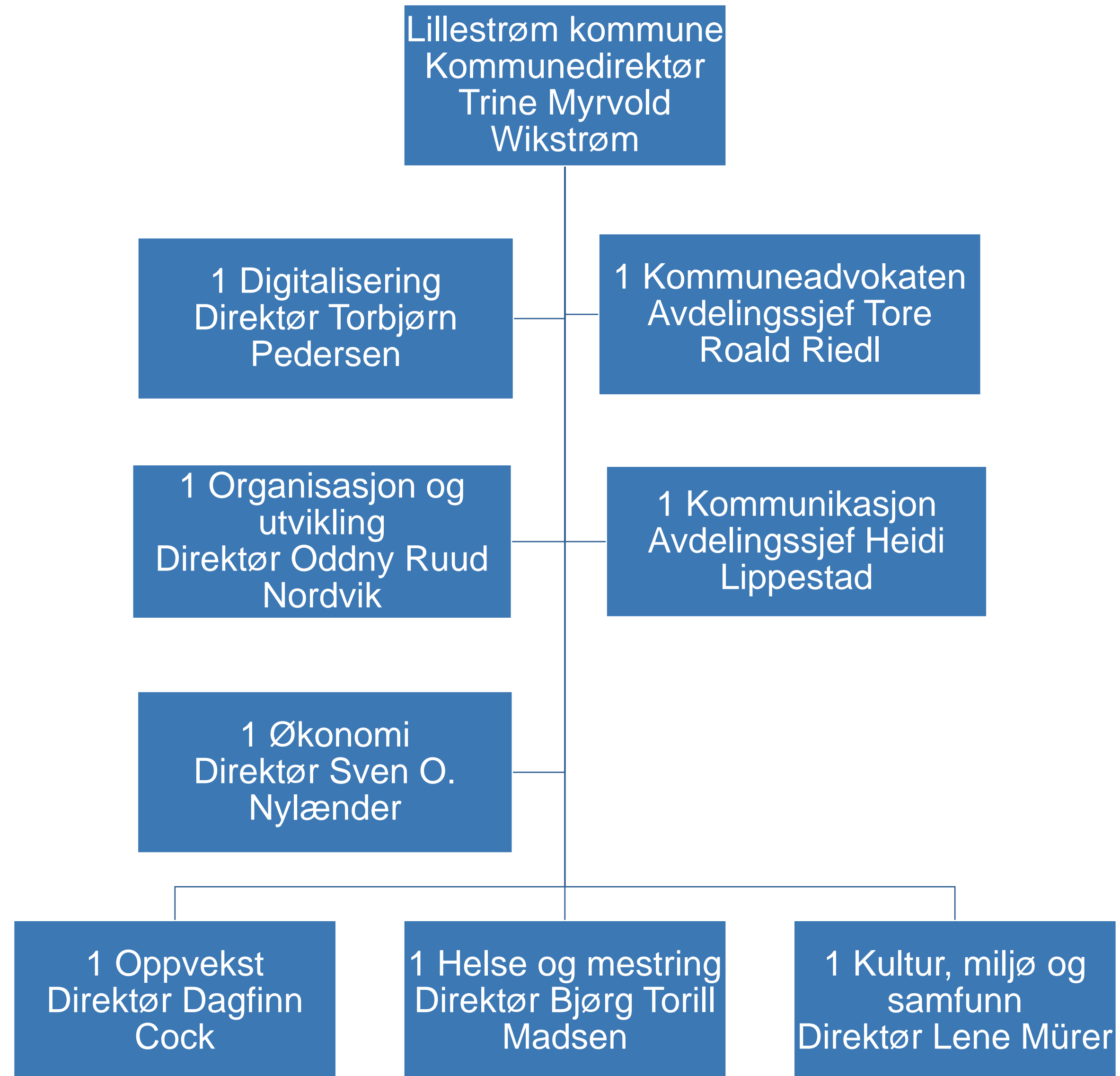


Lillestrøm  
kommune

# Lillestrøm kommune Organisasjonskart

Versjon 01.05.2023





Lillestrøm  
kommune

# Stabsavdelingene



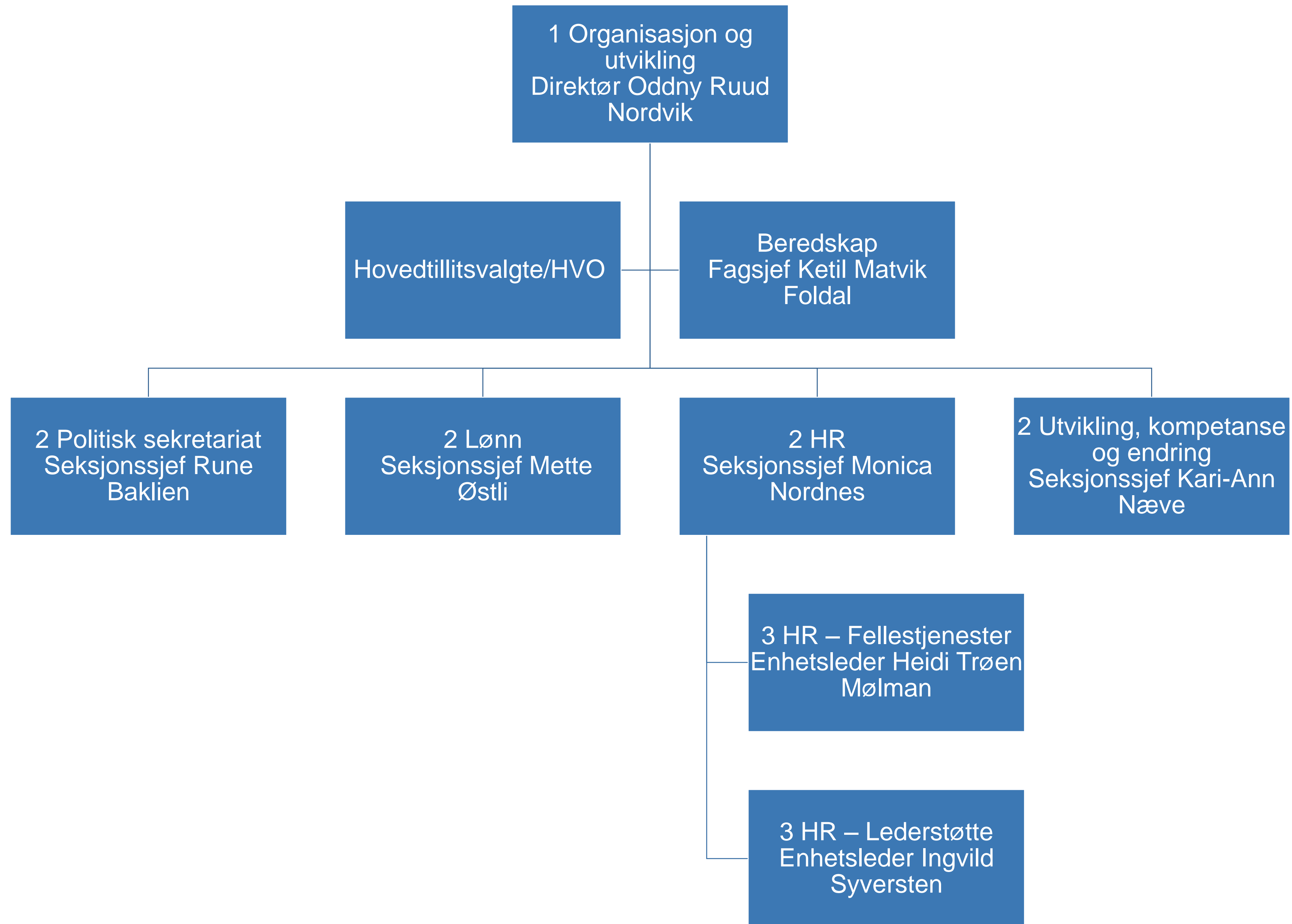
1 Økonomi  
Direktør Sven O.  
Nylænder

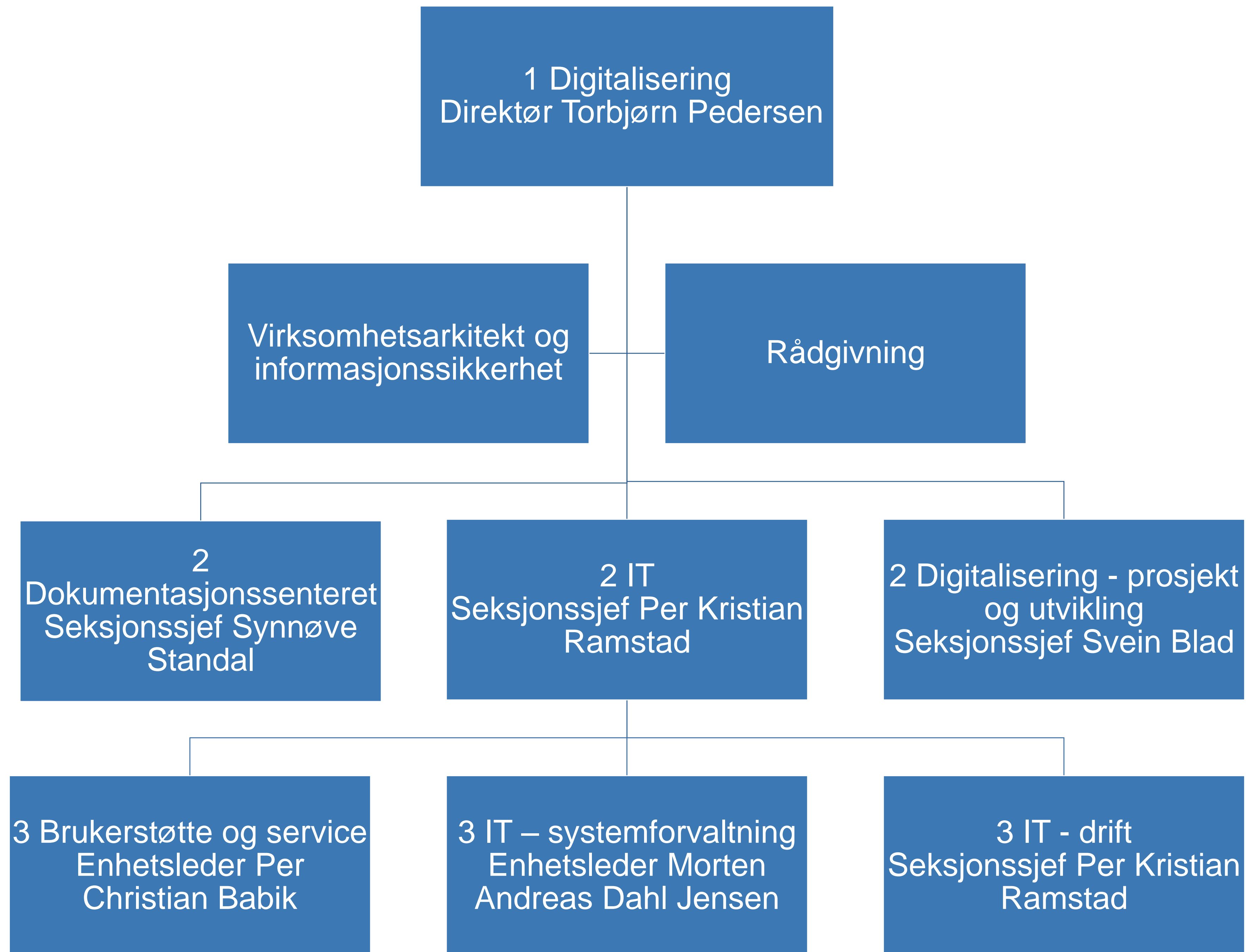
Fagstab

2 Innkjøp  
Seksjonssjef Carl  
Henriksen

2 Regnskap  
Seksjonssjef Mona  
Berntsen

2 Økonomi og  
virksomhetsstyring  
Seksjonssjef  
Anders Taxt



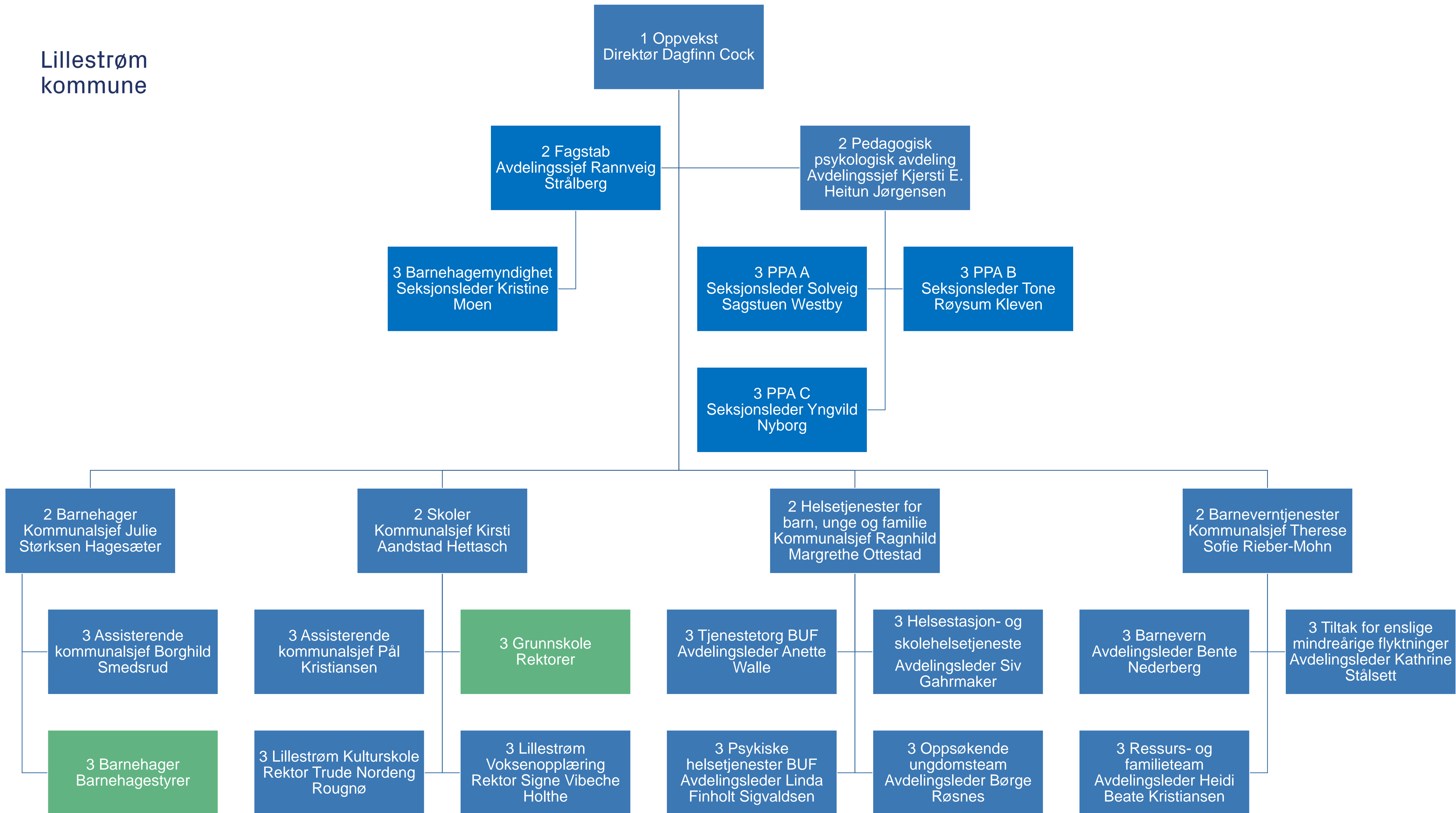


Lillestrøm  
kommune

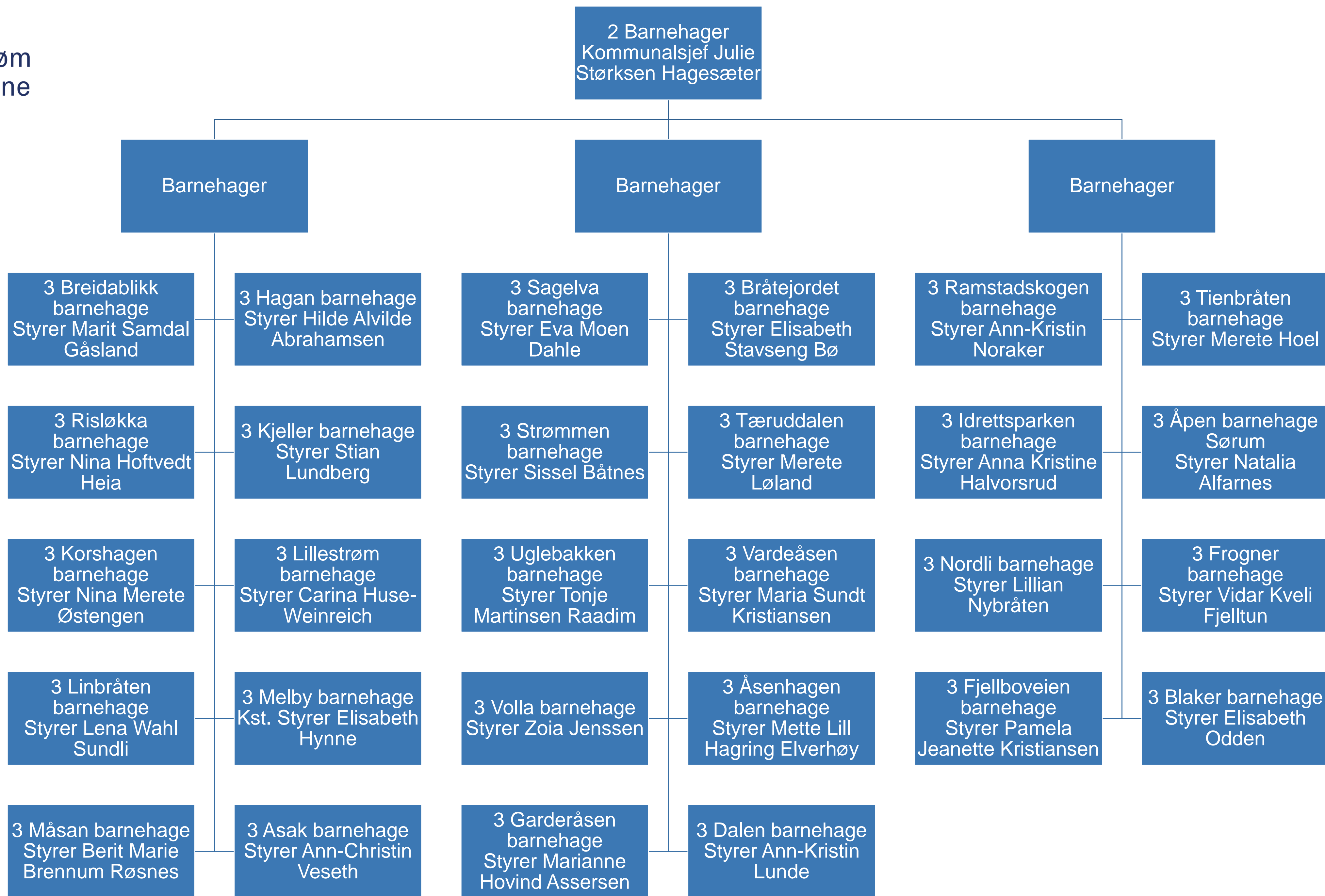
# Oppvekst



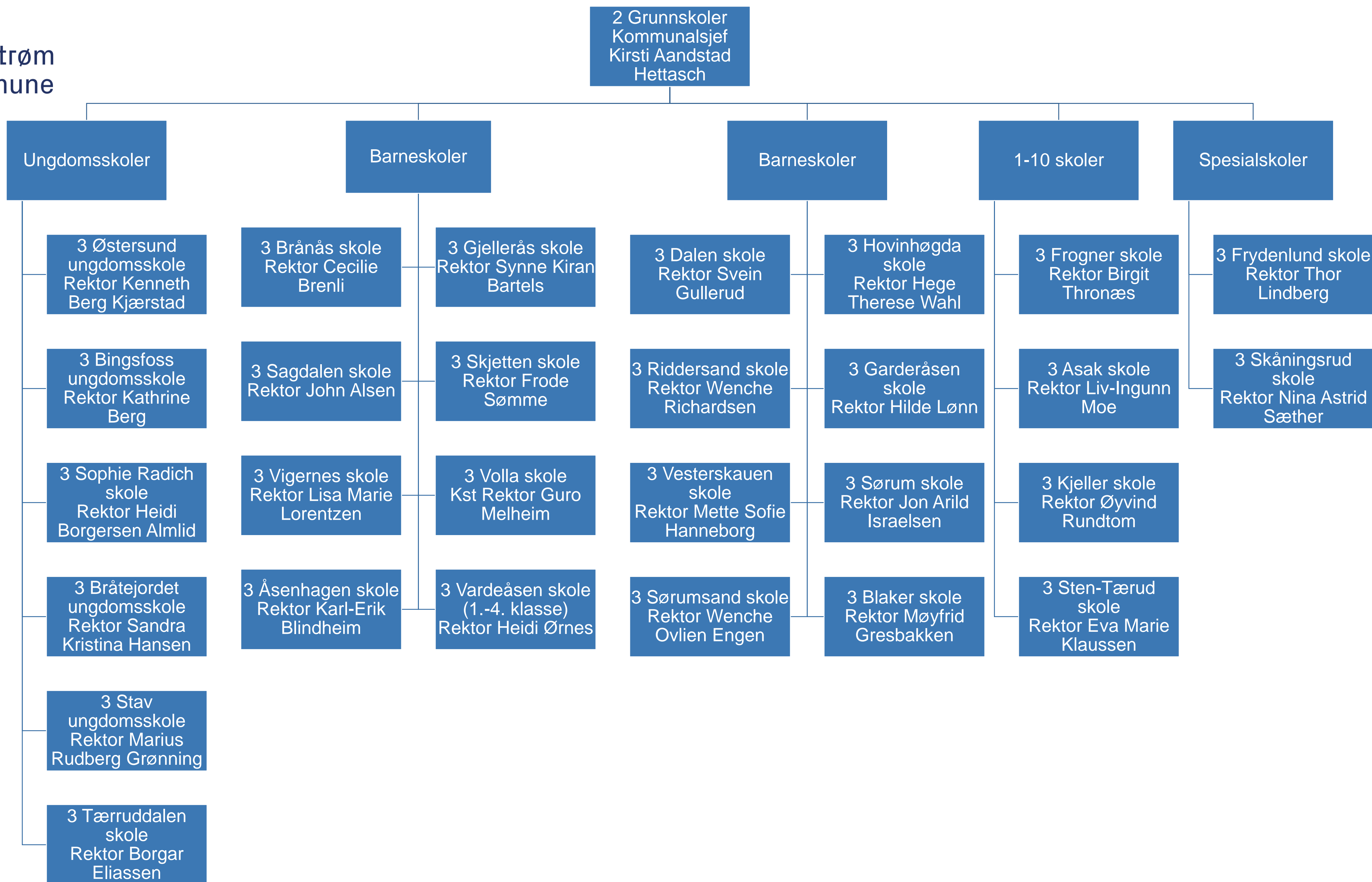
Lillestrøm  
kommune

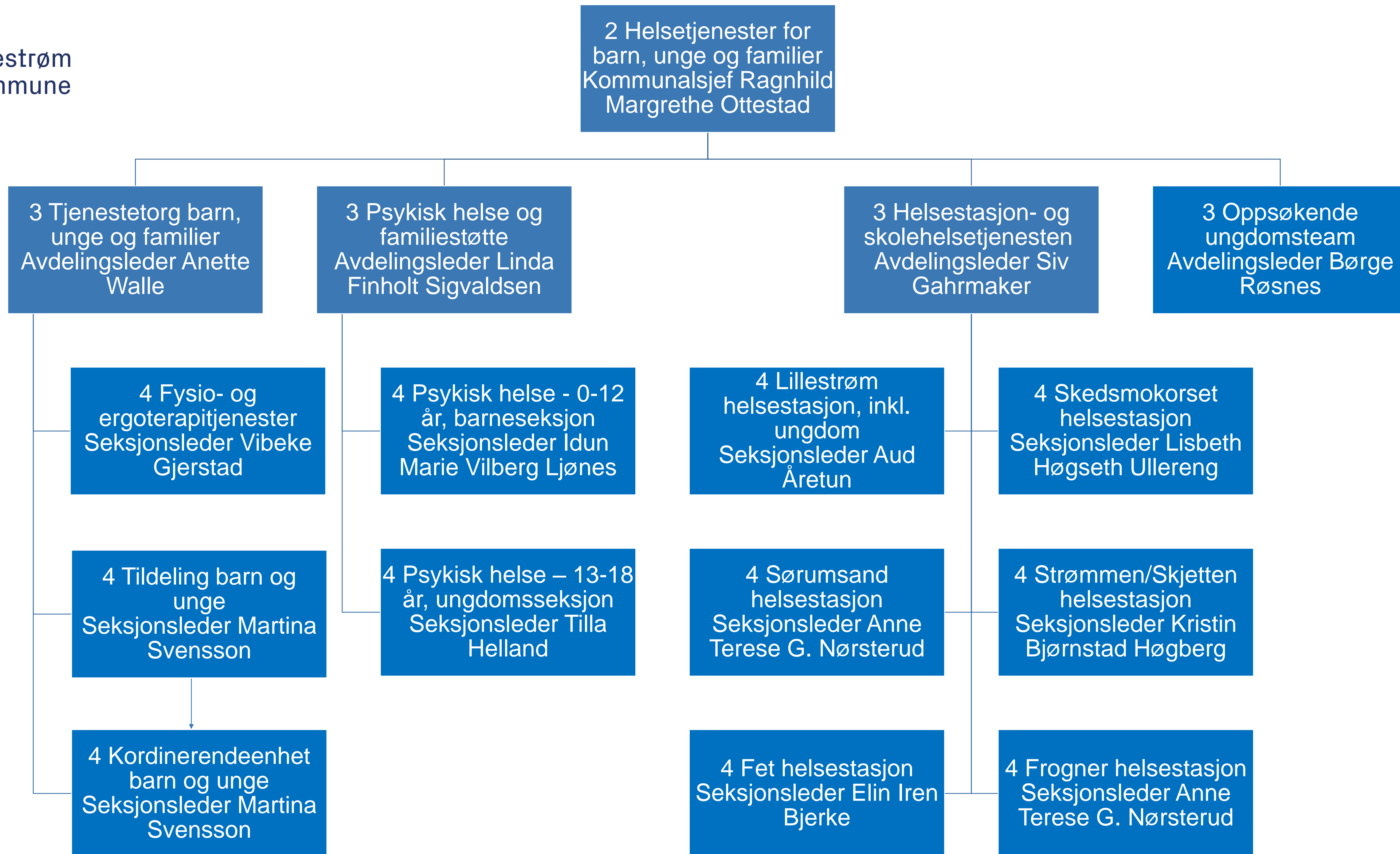


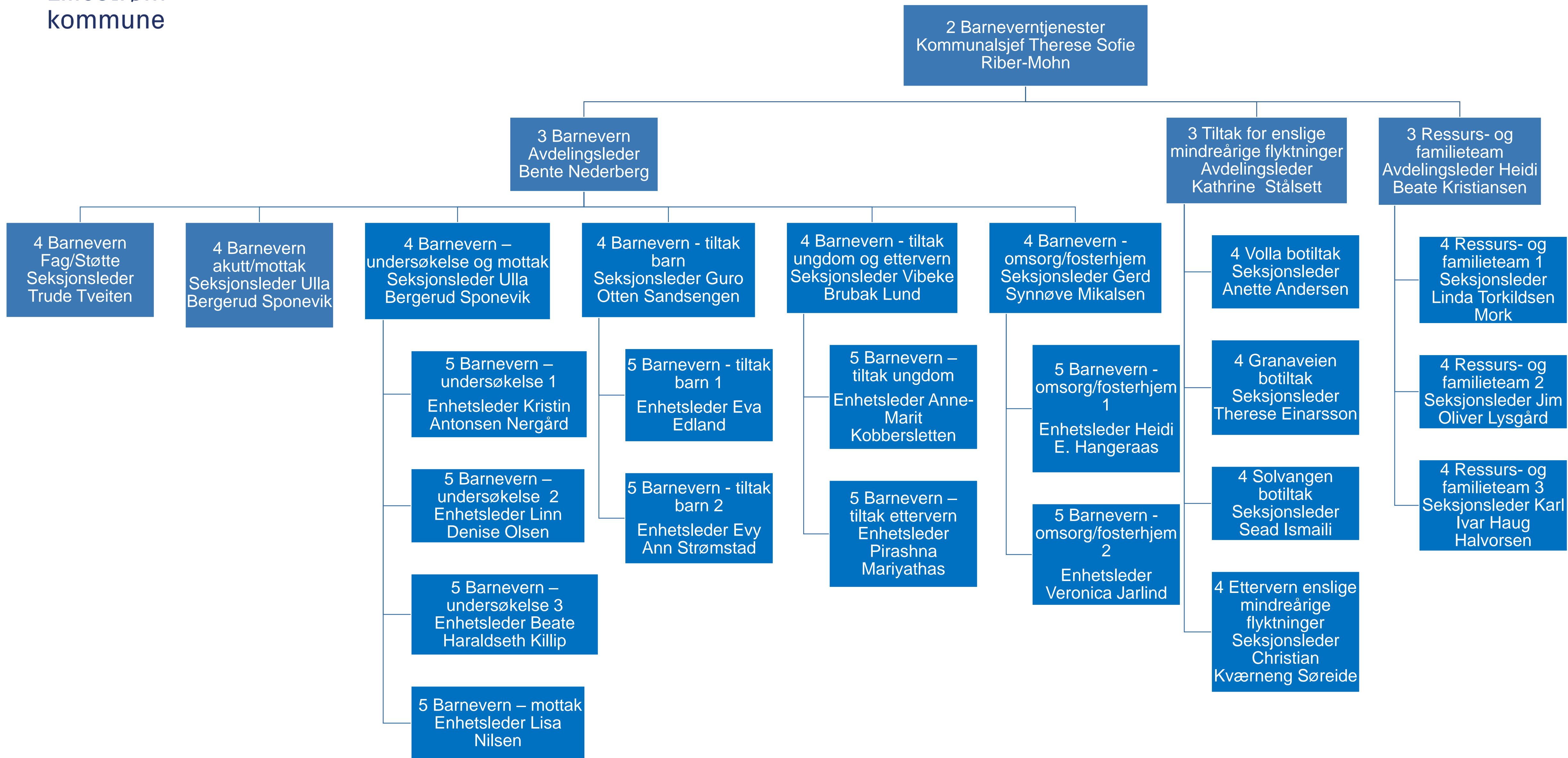




Lillestrøm  
kommune

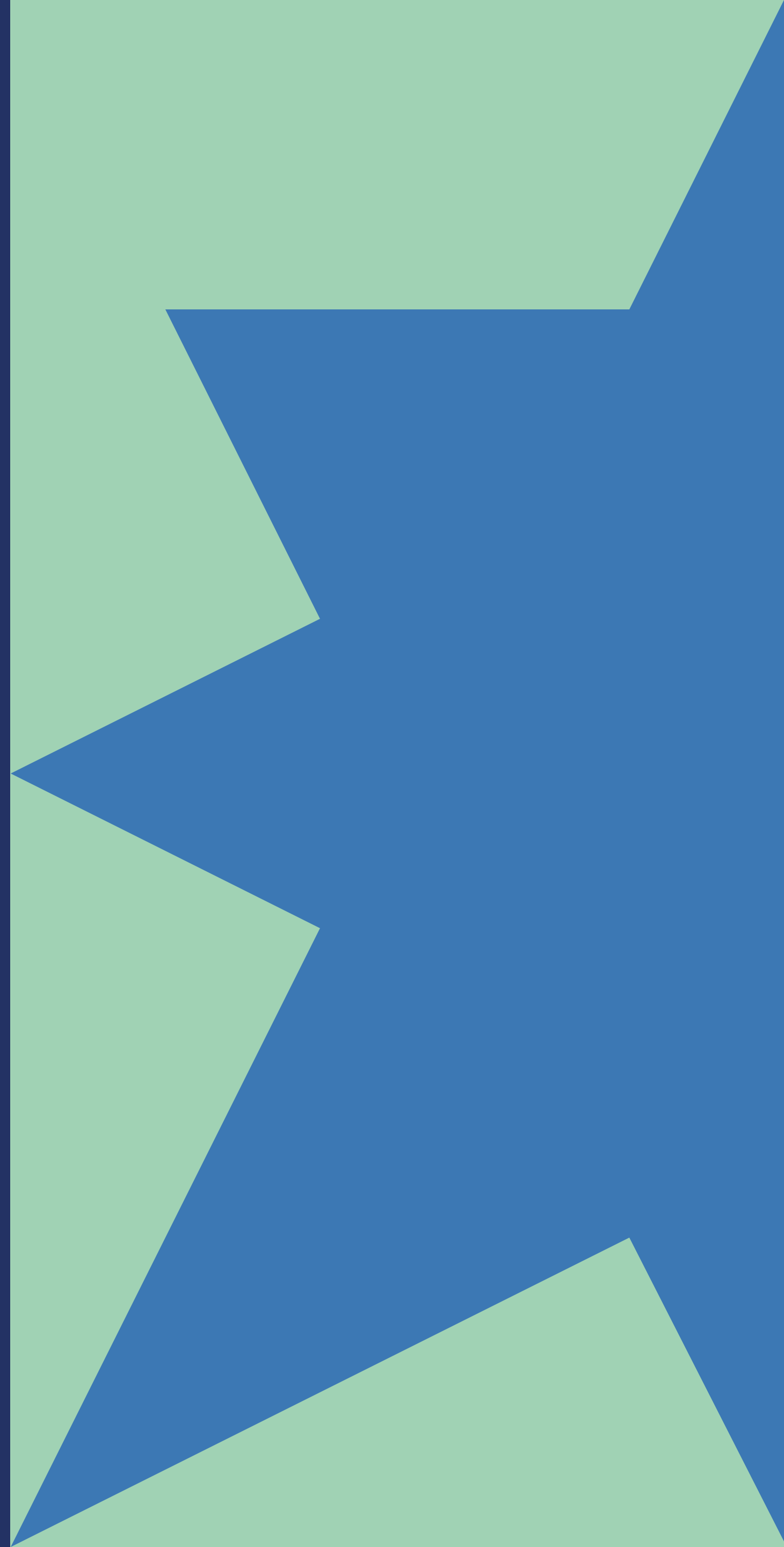


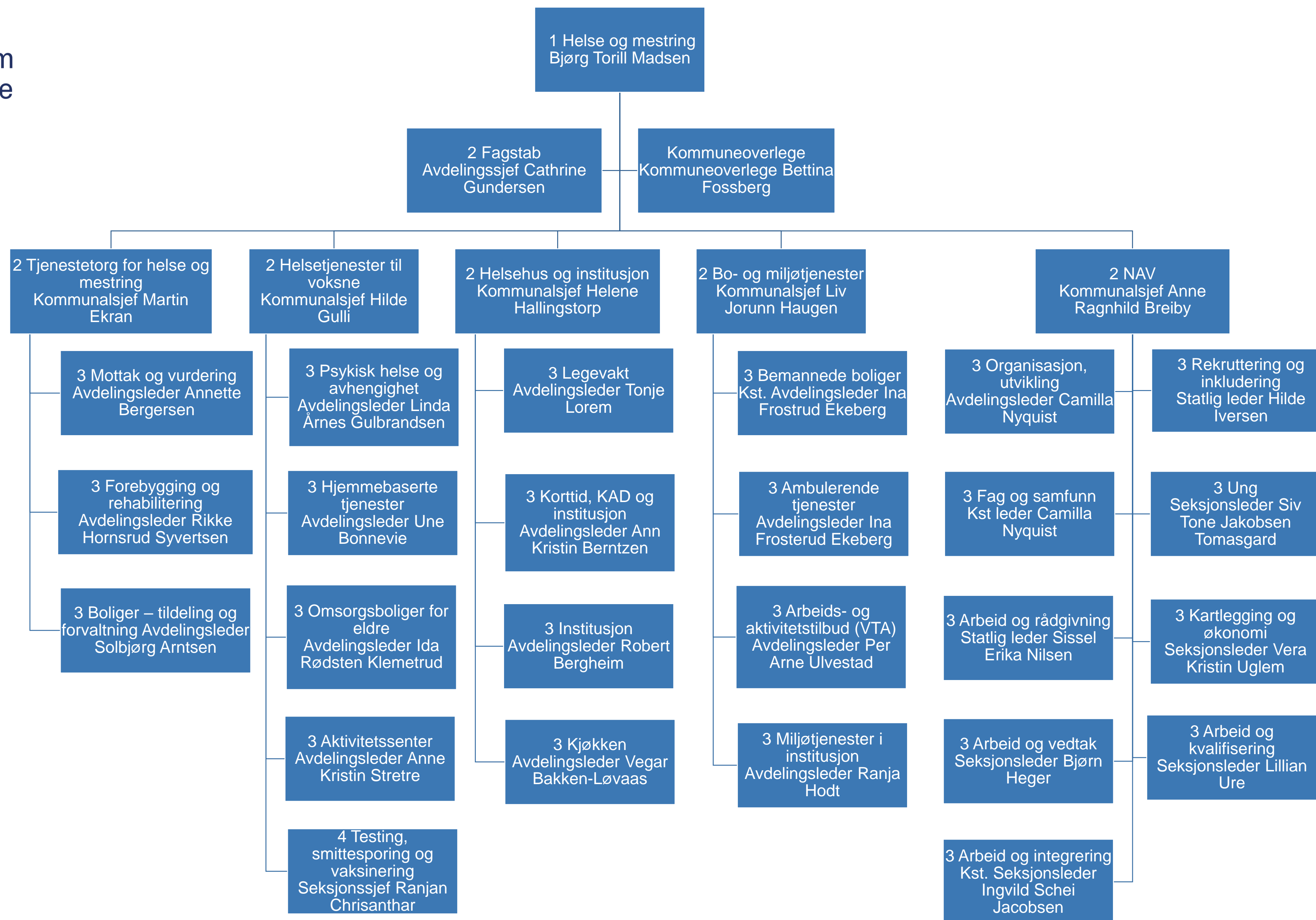


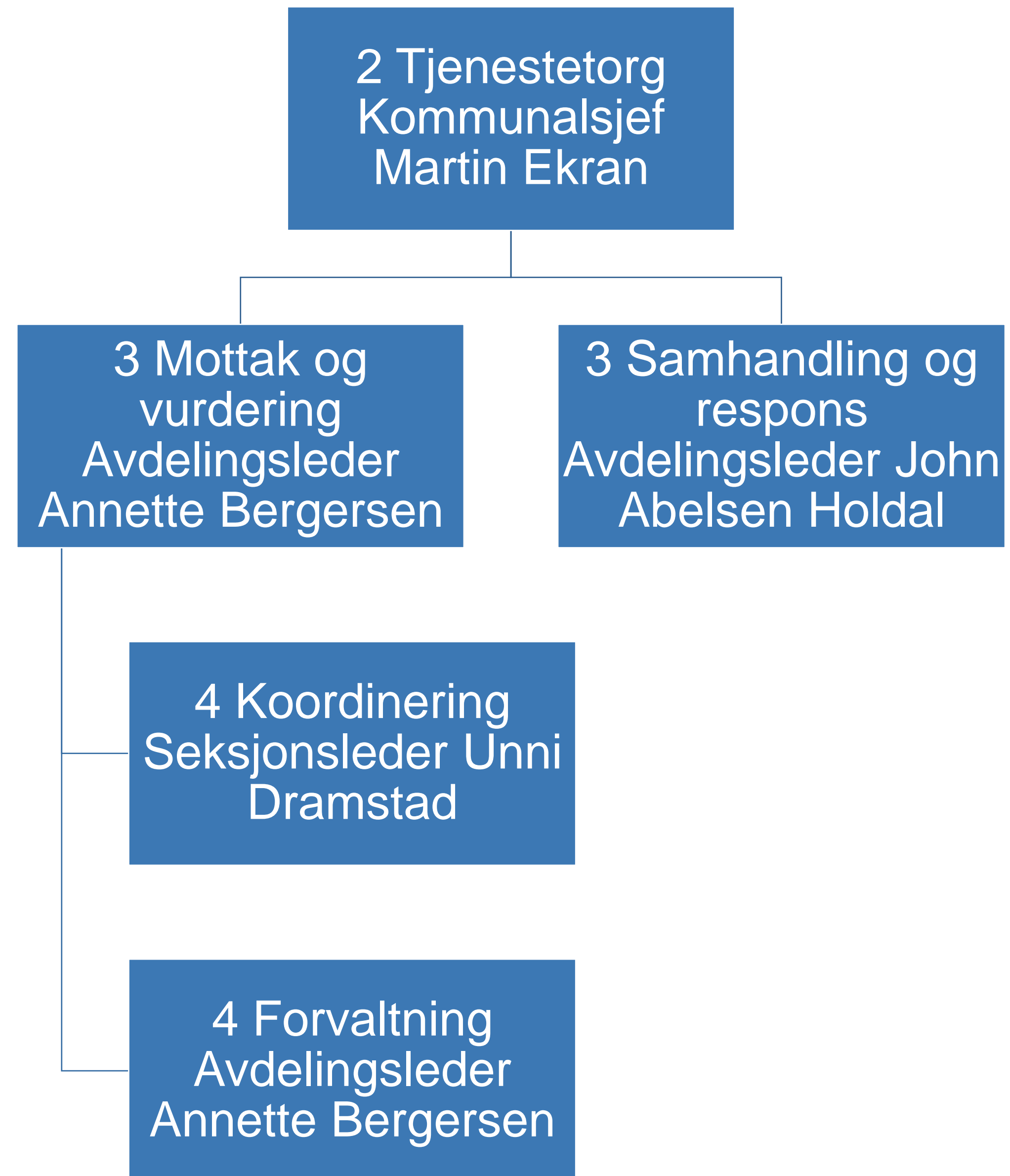


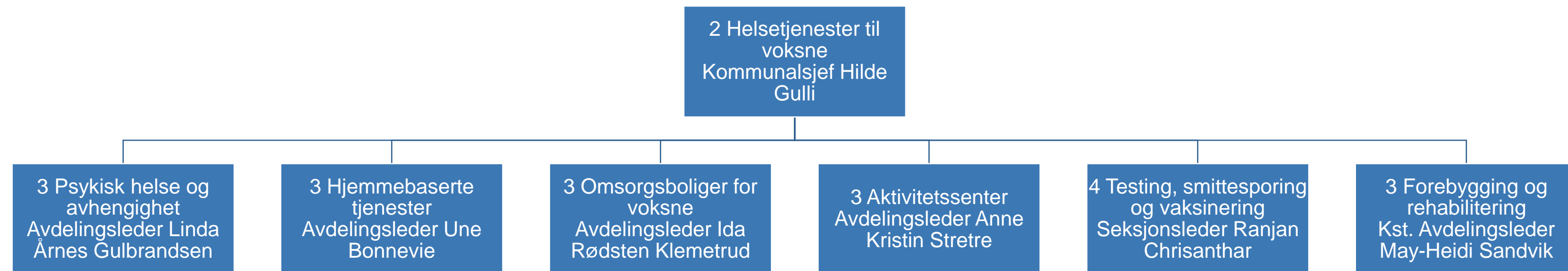
Lillestrøm  
kommune

# Helse og mestring



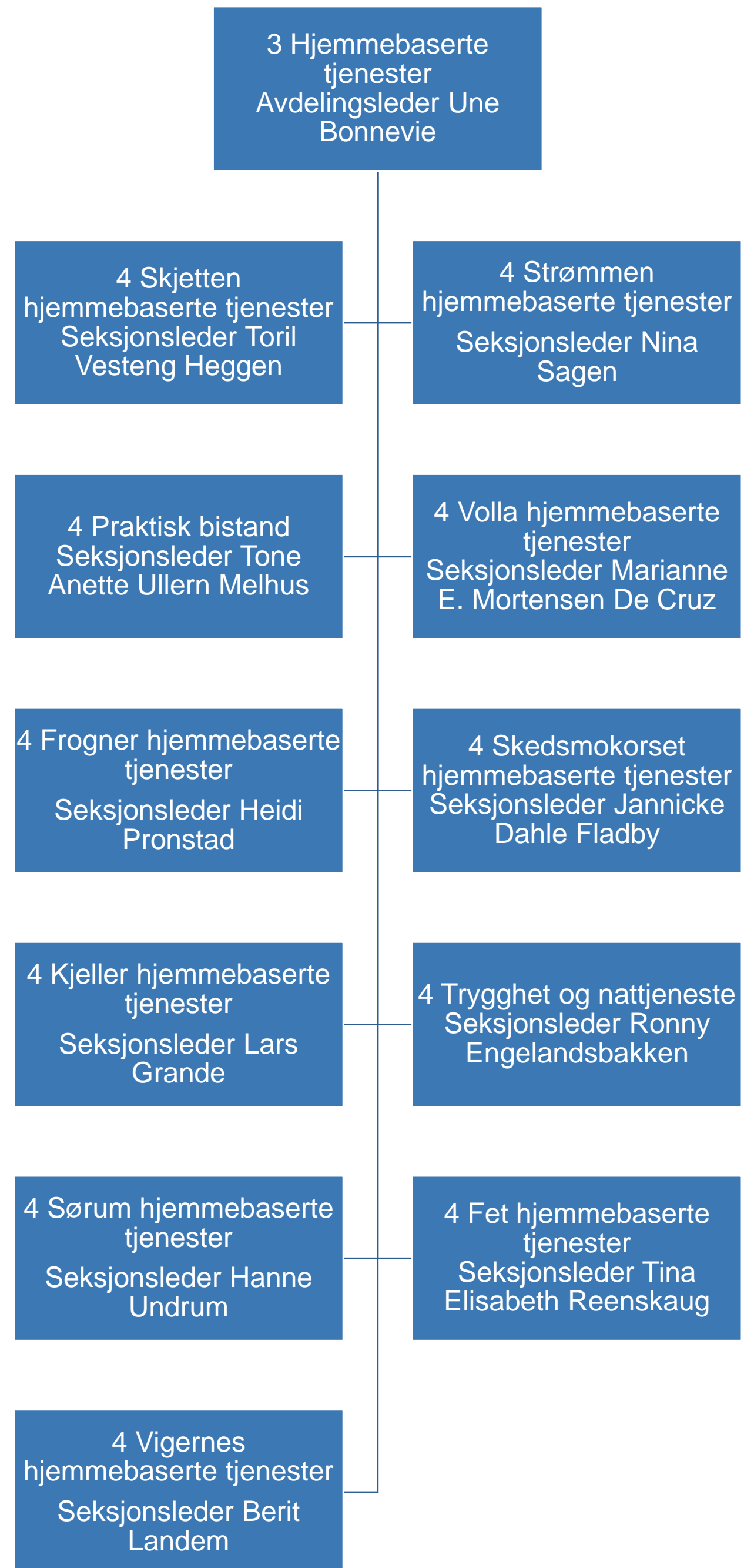


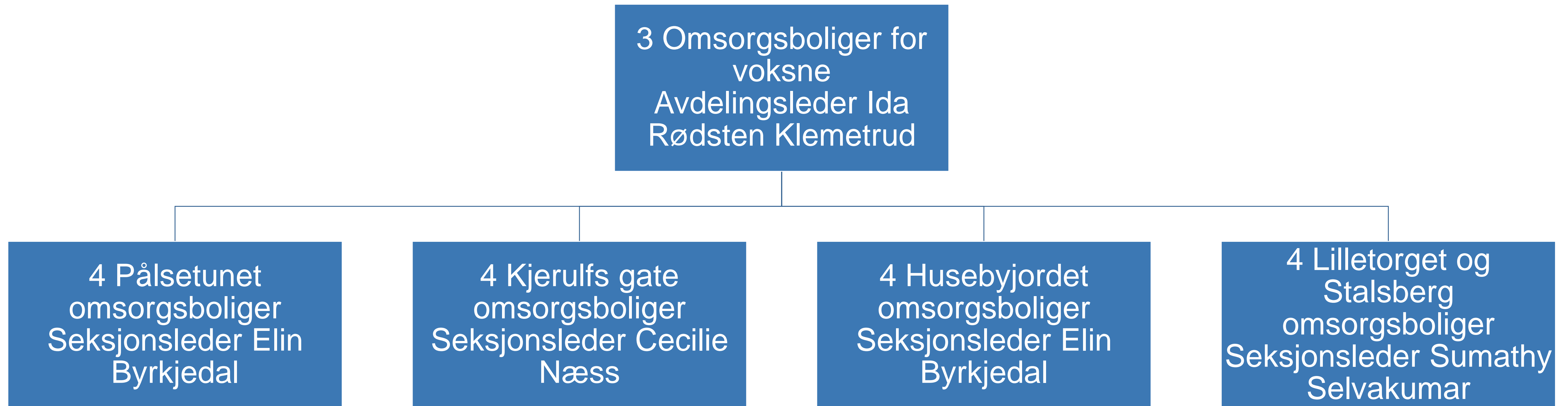


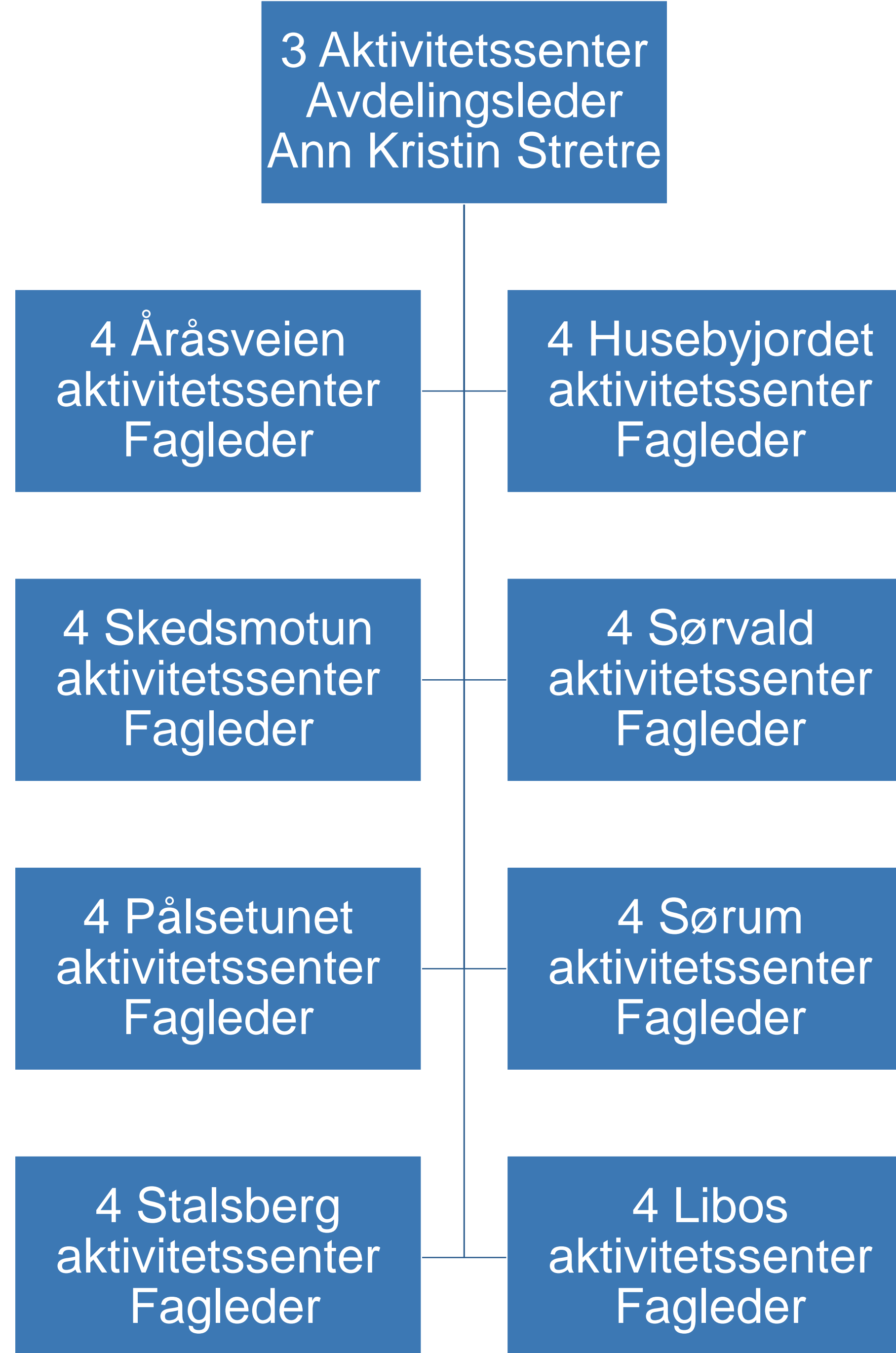


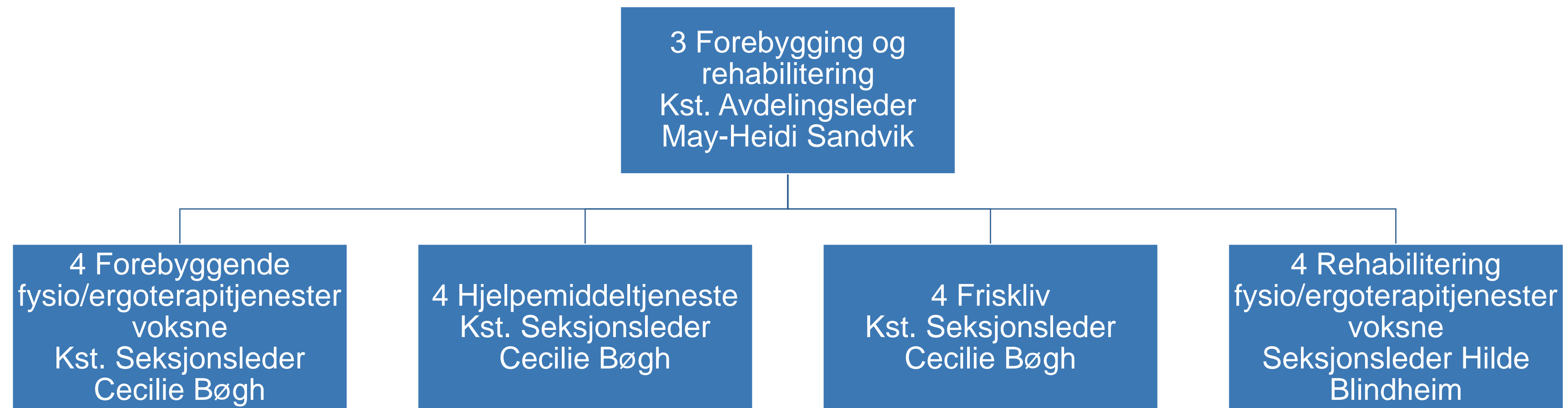












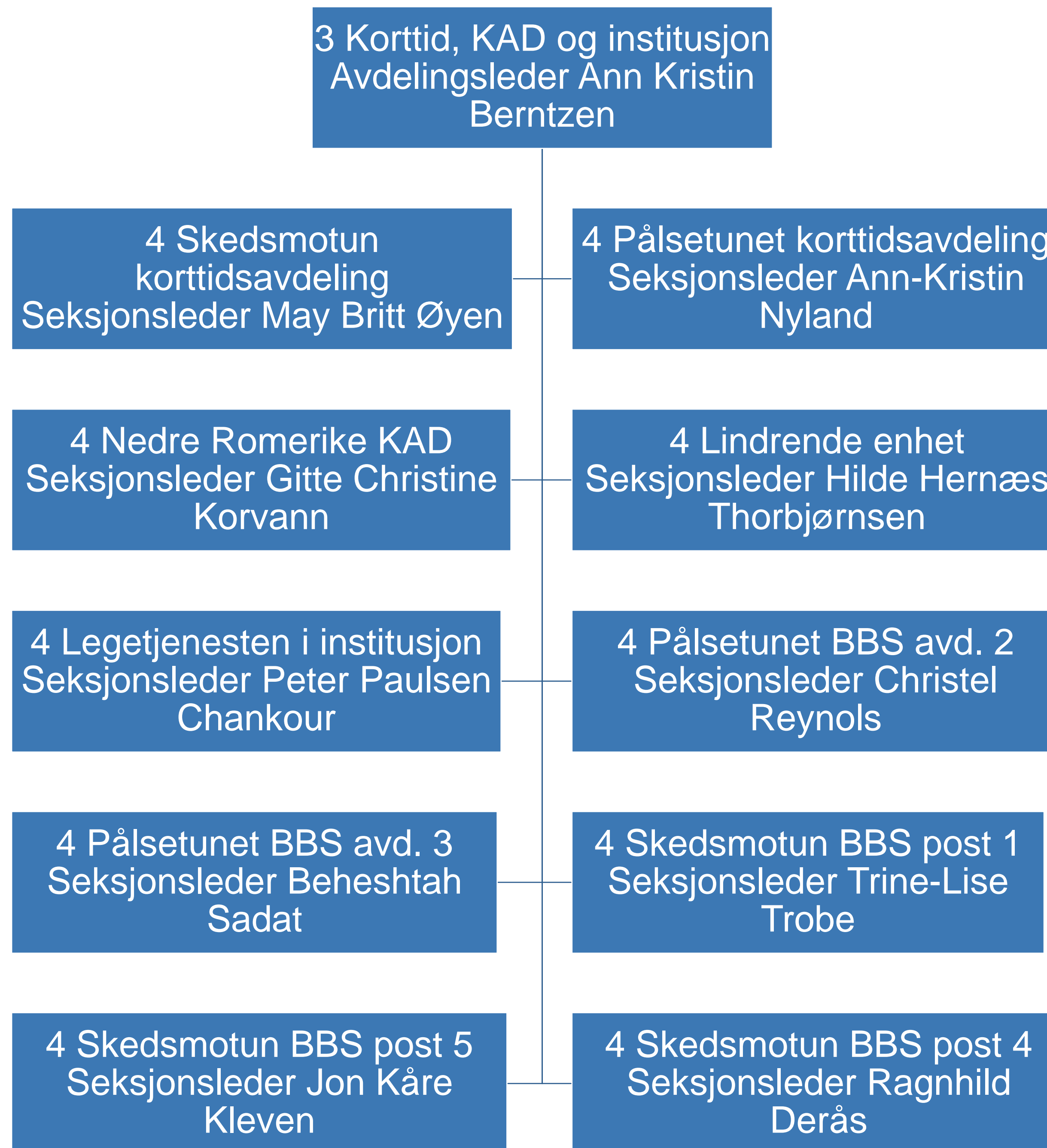


3 Legevakt  
Avdelingsleder Tonje  
Lorem

```
graph TD; A["3 Legevakt  
Avdelingsleder Tonje  
Lorem"] --- B["4 Legevakt - operatører  
Seksjonsleder Tonje  
Cathrine Knarbo"]; A --- C["4 Legevakt – leger  
Seksjonsleder Kiana  
Kasiri"];
```

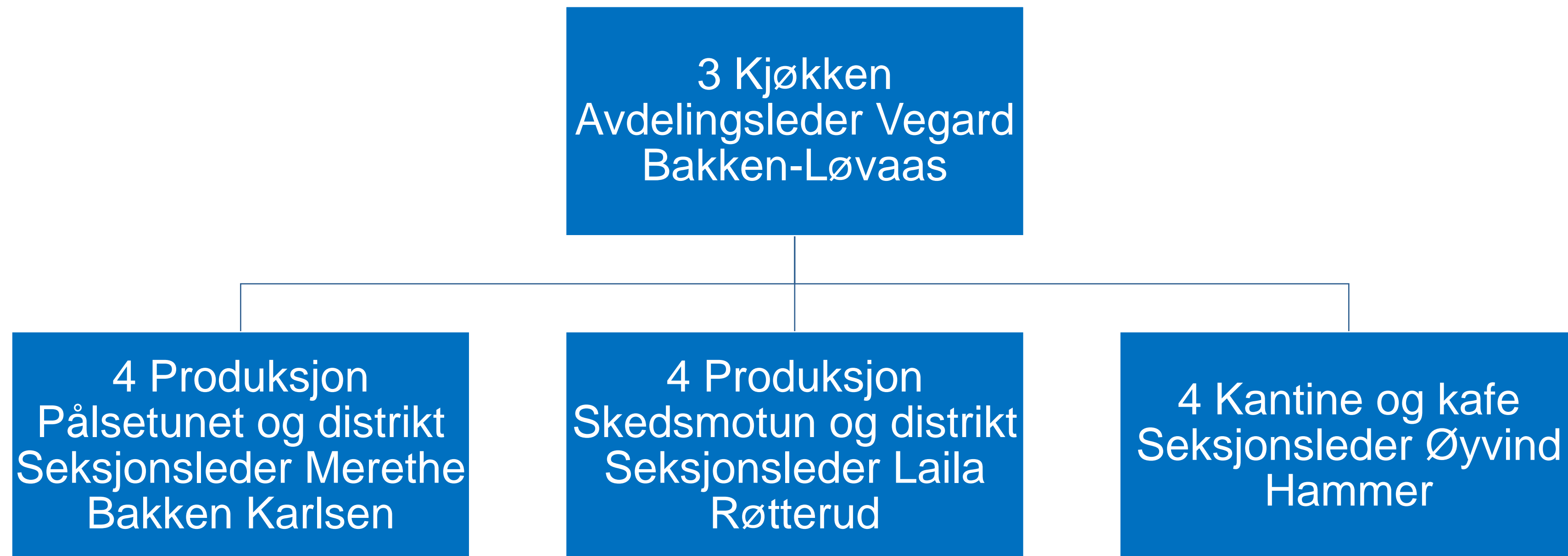
4 Legevakt - operatører  
Seksjonsleder Tonje  
Cathrine Knarbo

4 Legevakt – leger  
Seksjonsleder Kiana  
Kasiri

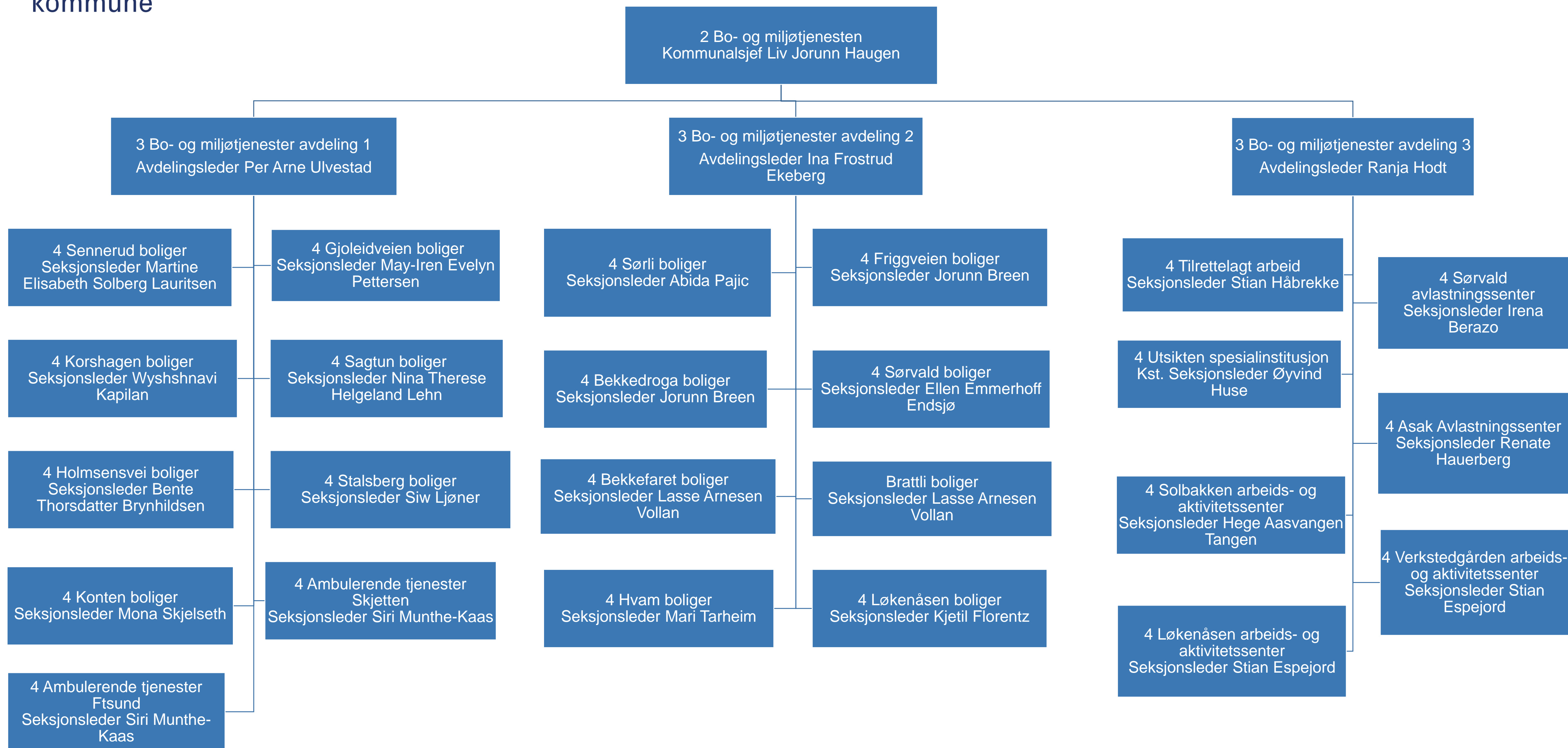








# Lillestrøm kommune

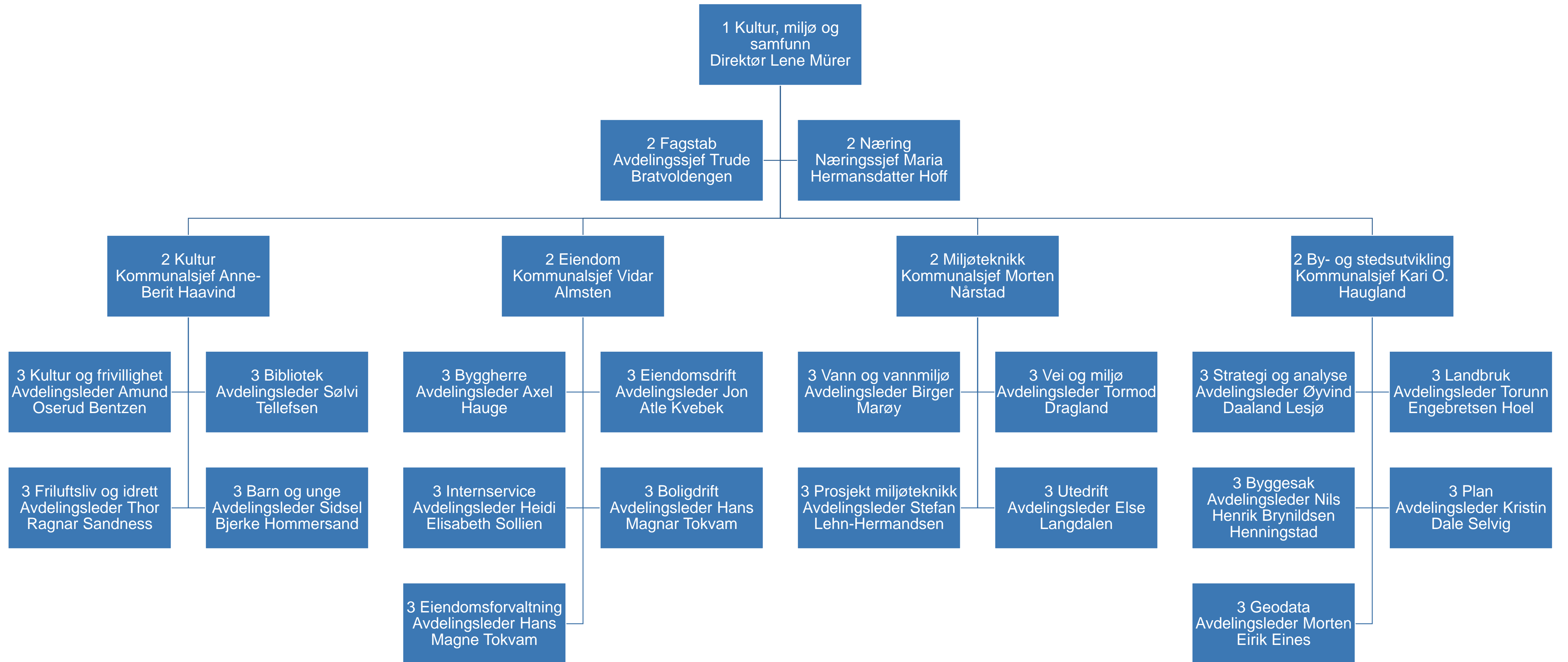


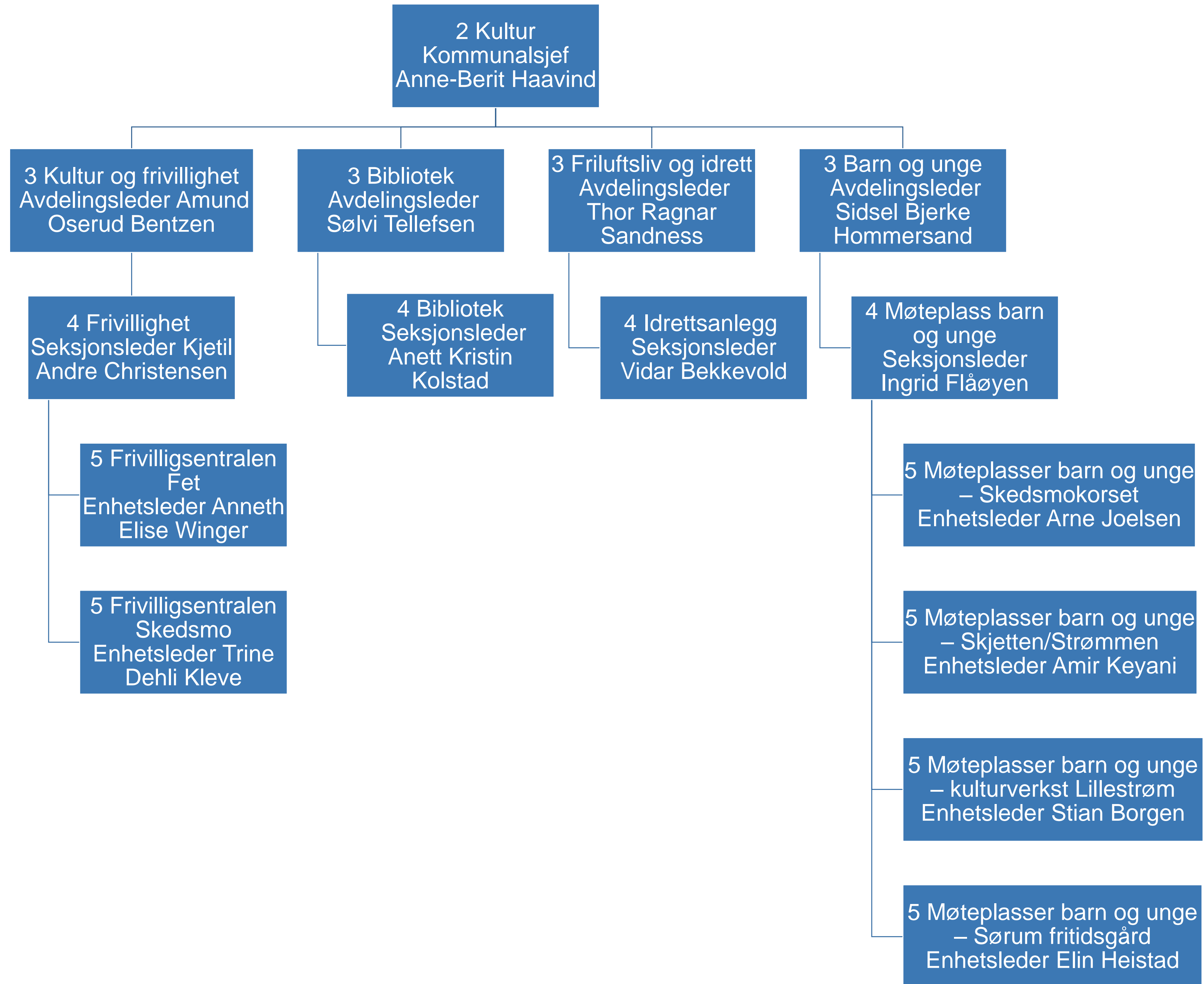
Lillestrøm  
kommune

# Kultur, miljø og samfunn



# Lillestrøm kommune





Lillestrøm  
kommune

