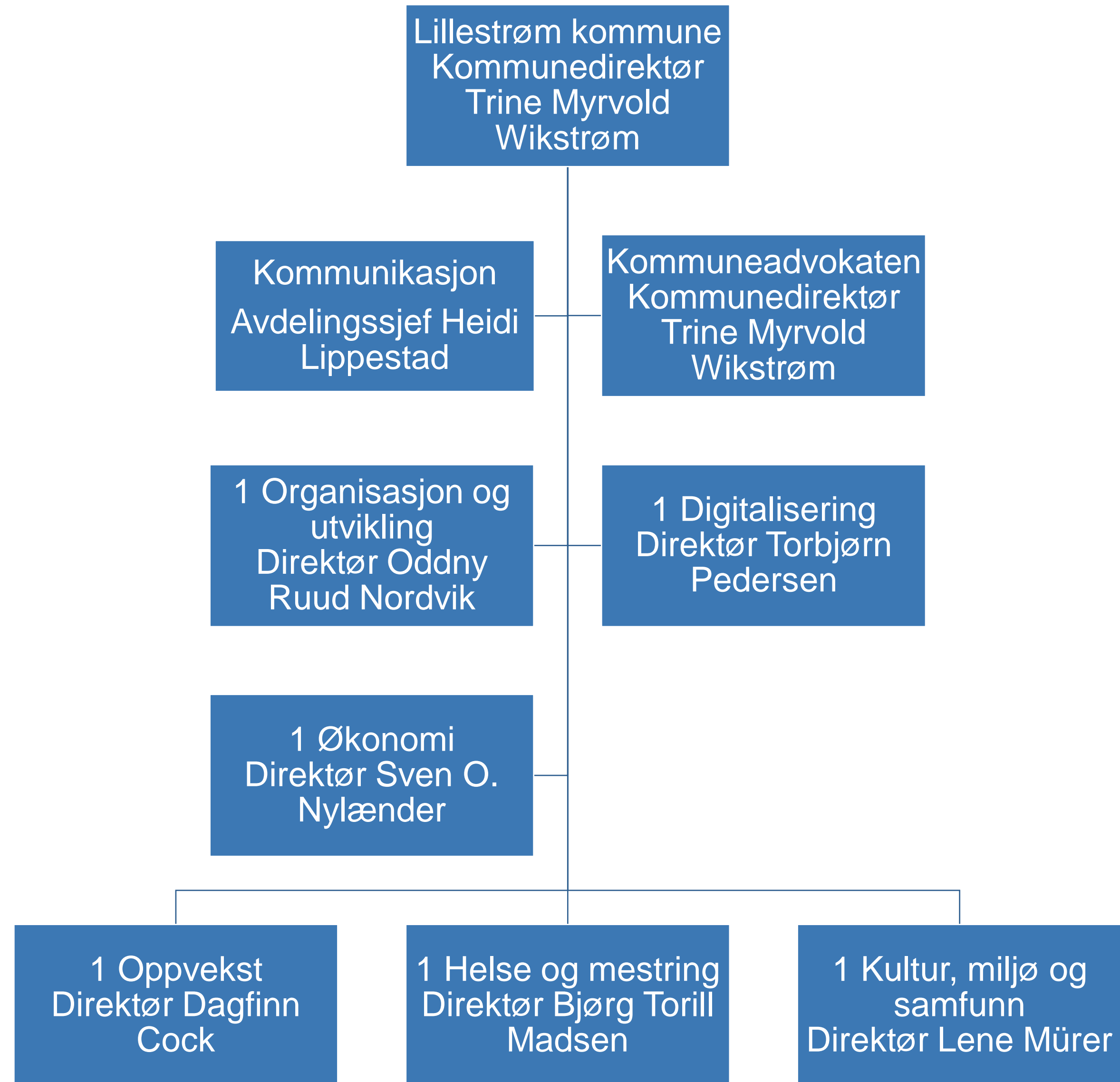


Lillestrøm
kommune

Lillestrøm kommune Organisasjonskart

Versjon 01.06.2022





Lillestrøm
kommune

Stabsavdelingene



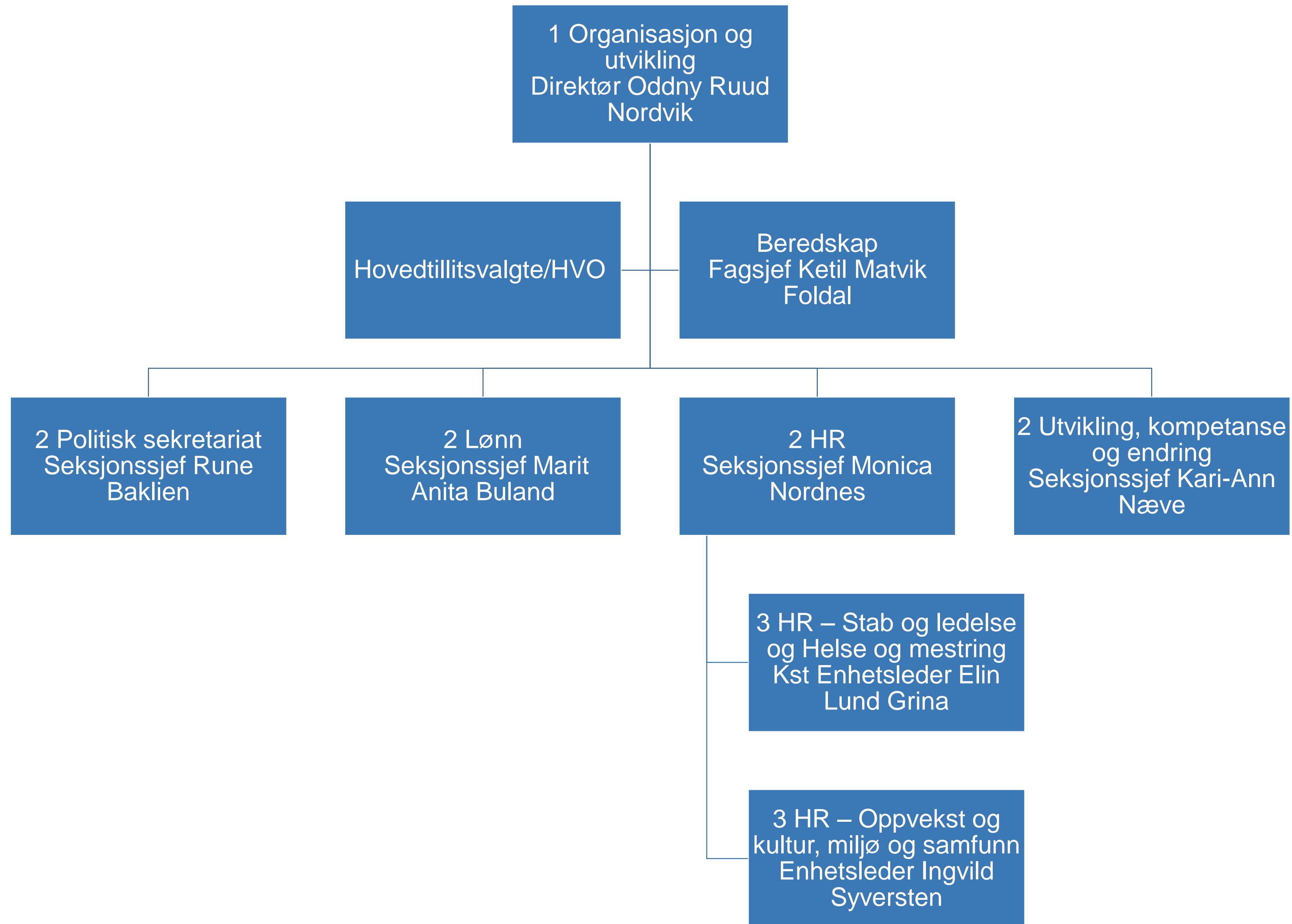
1 Økonomi
Direktør Sven O.
Nylænder

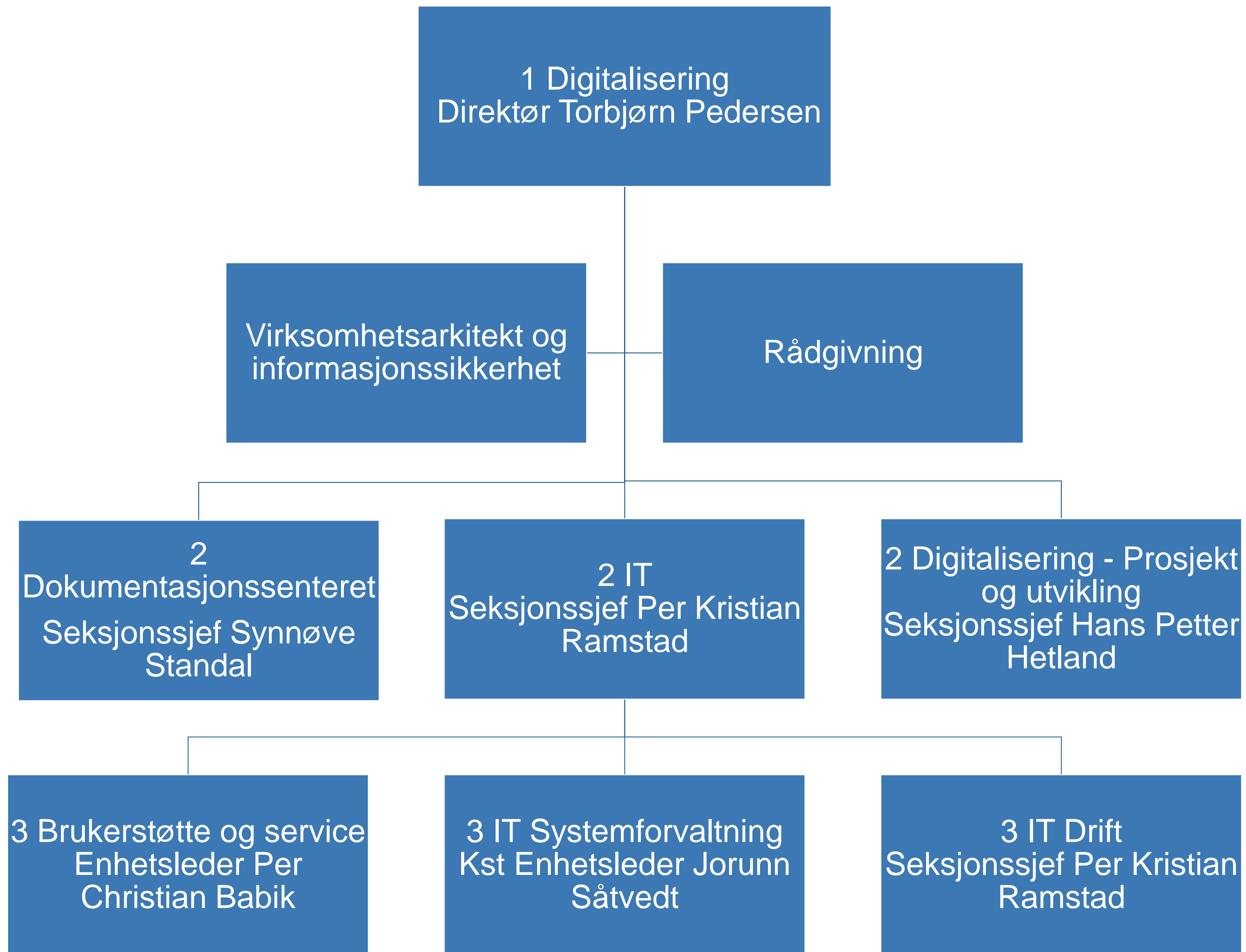
2 Fagstab

2 Innkjøp
Seksjonssjef Carl
Henriksen

2 Regnskap
Seksjonssjef Mona
Berntsen

2 Økonomi og
virksomhetsstyring
Seksjonssjef
Anders Taxt



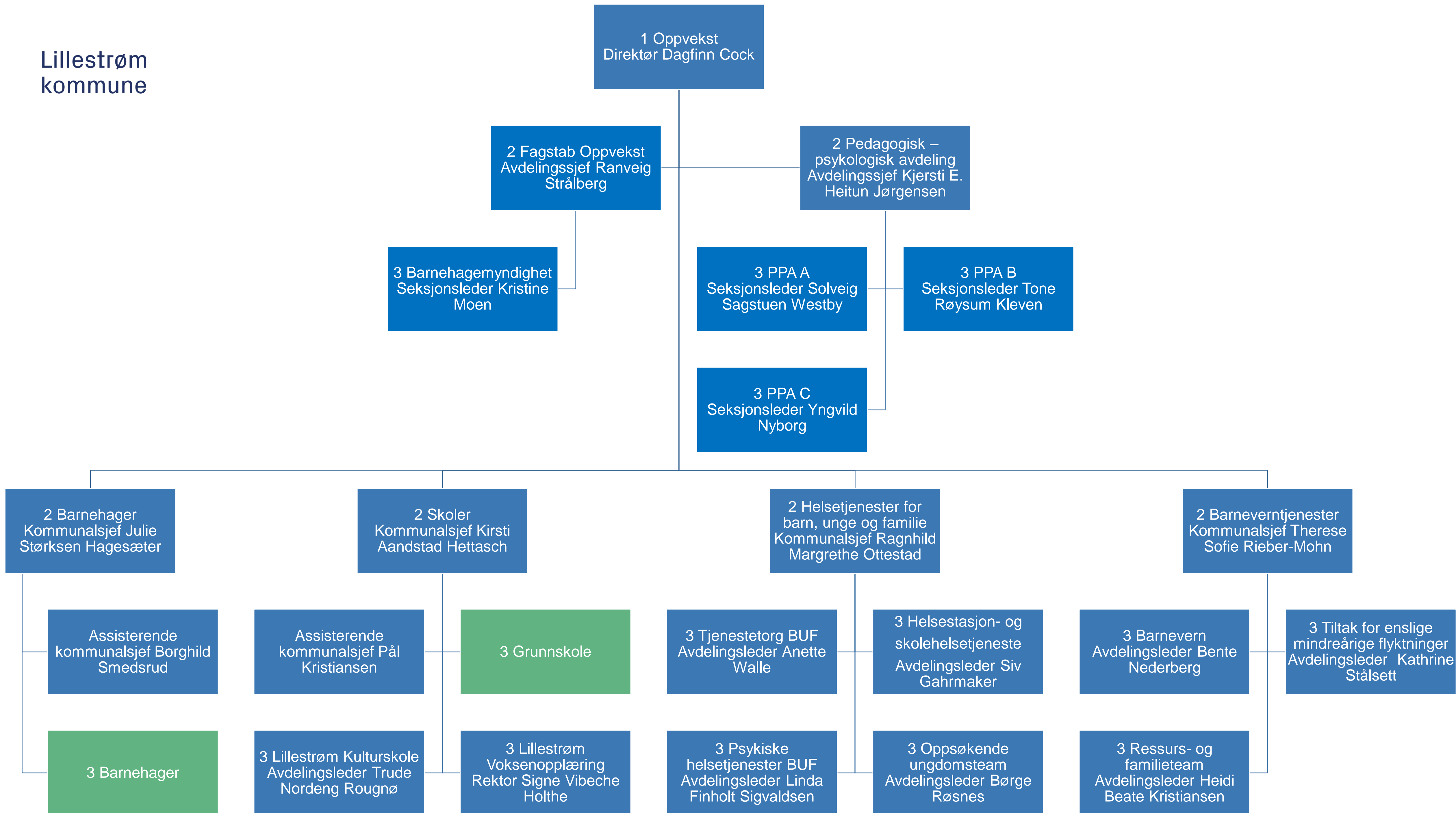


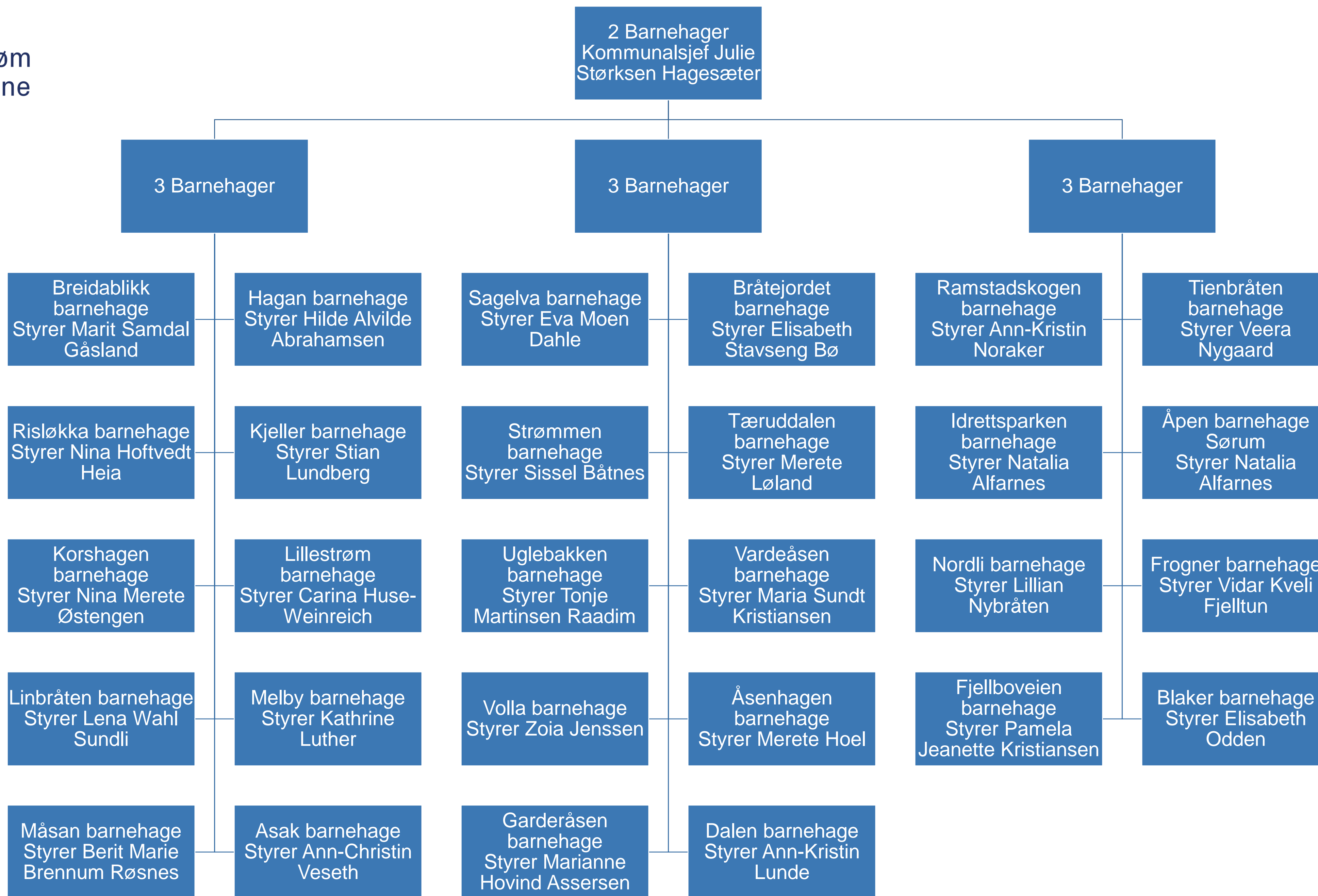
Lillestrøm
kommune

Oppvekst

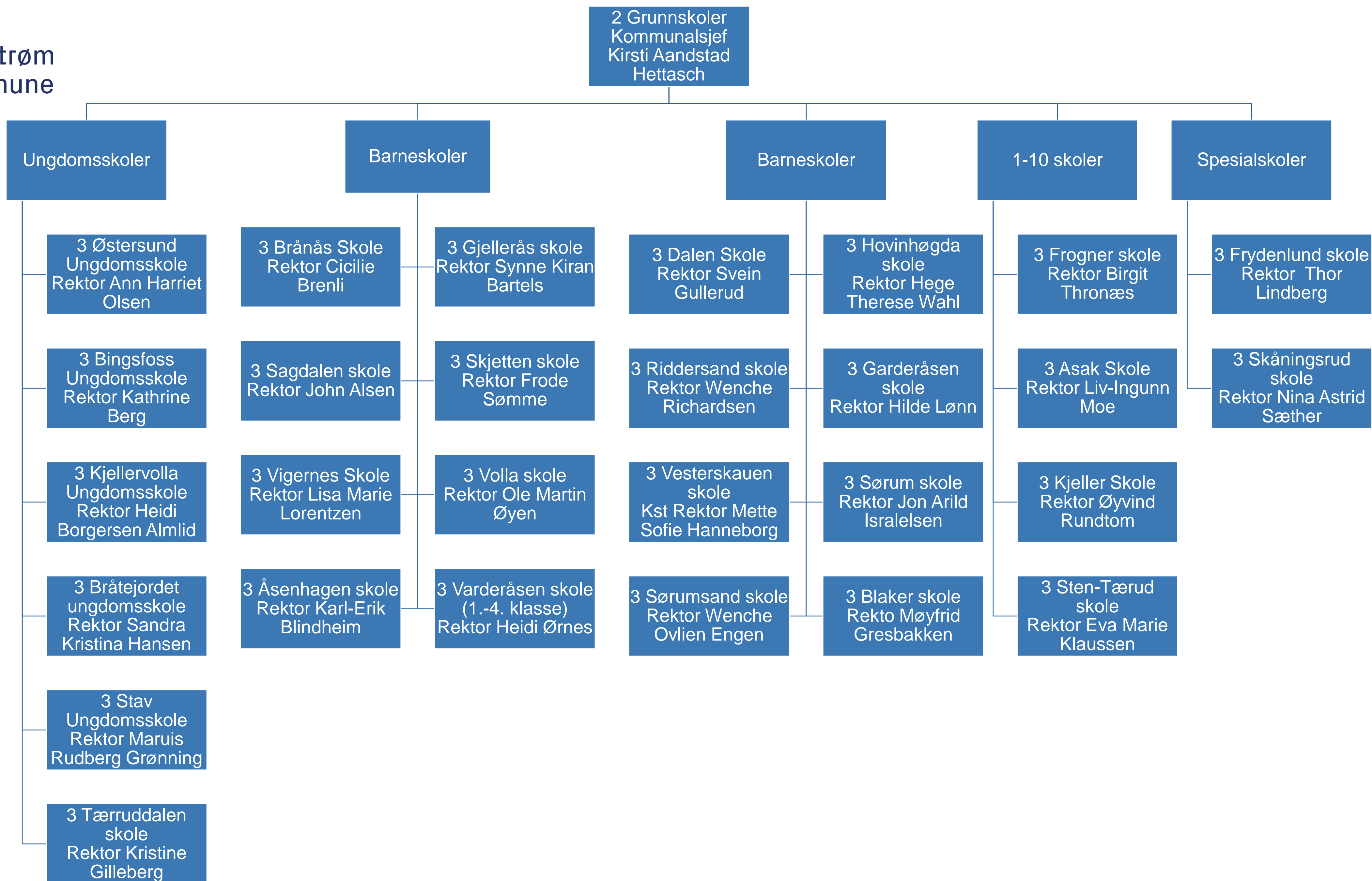


Lillestrøm
kommune

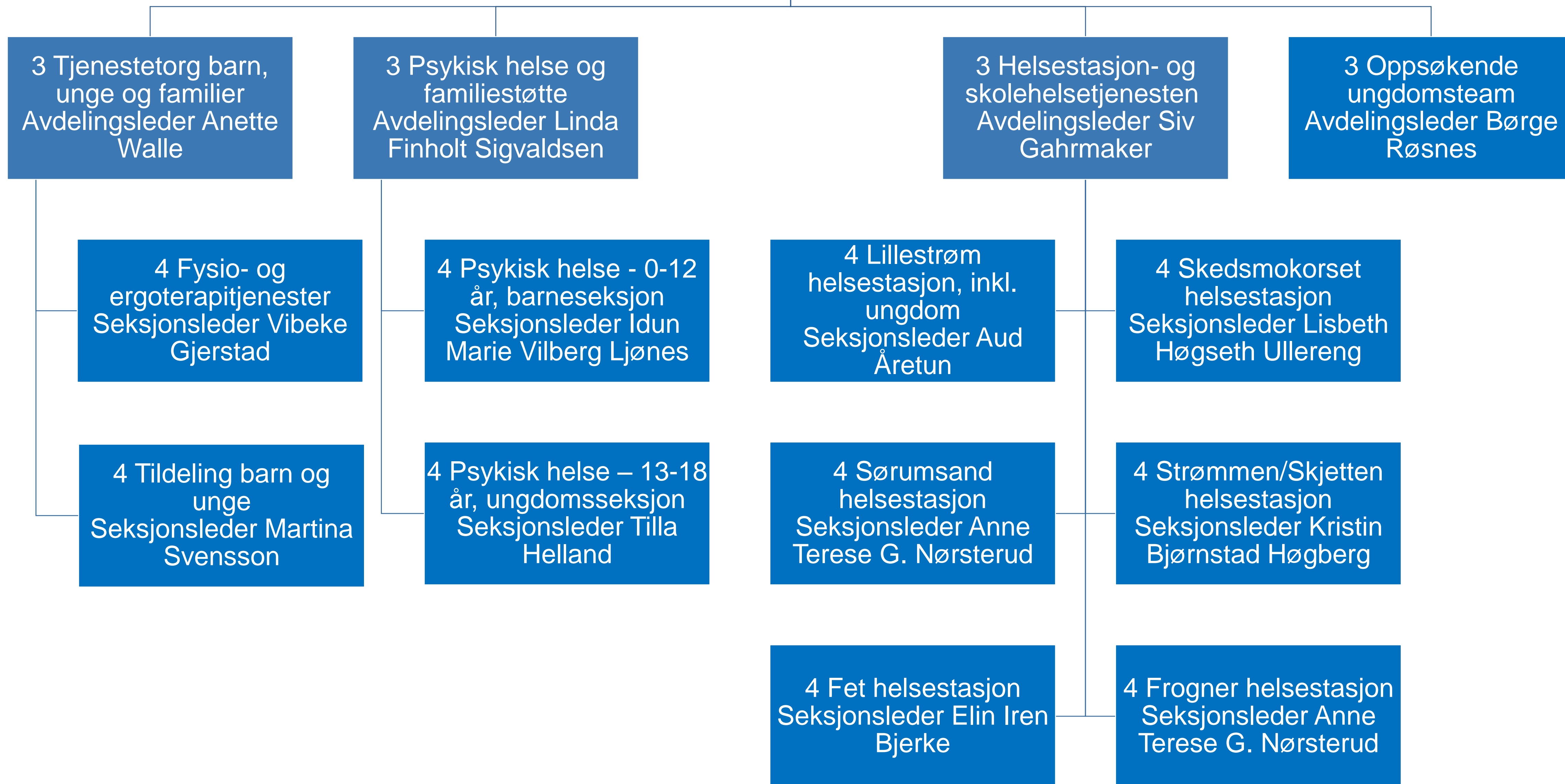




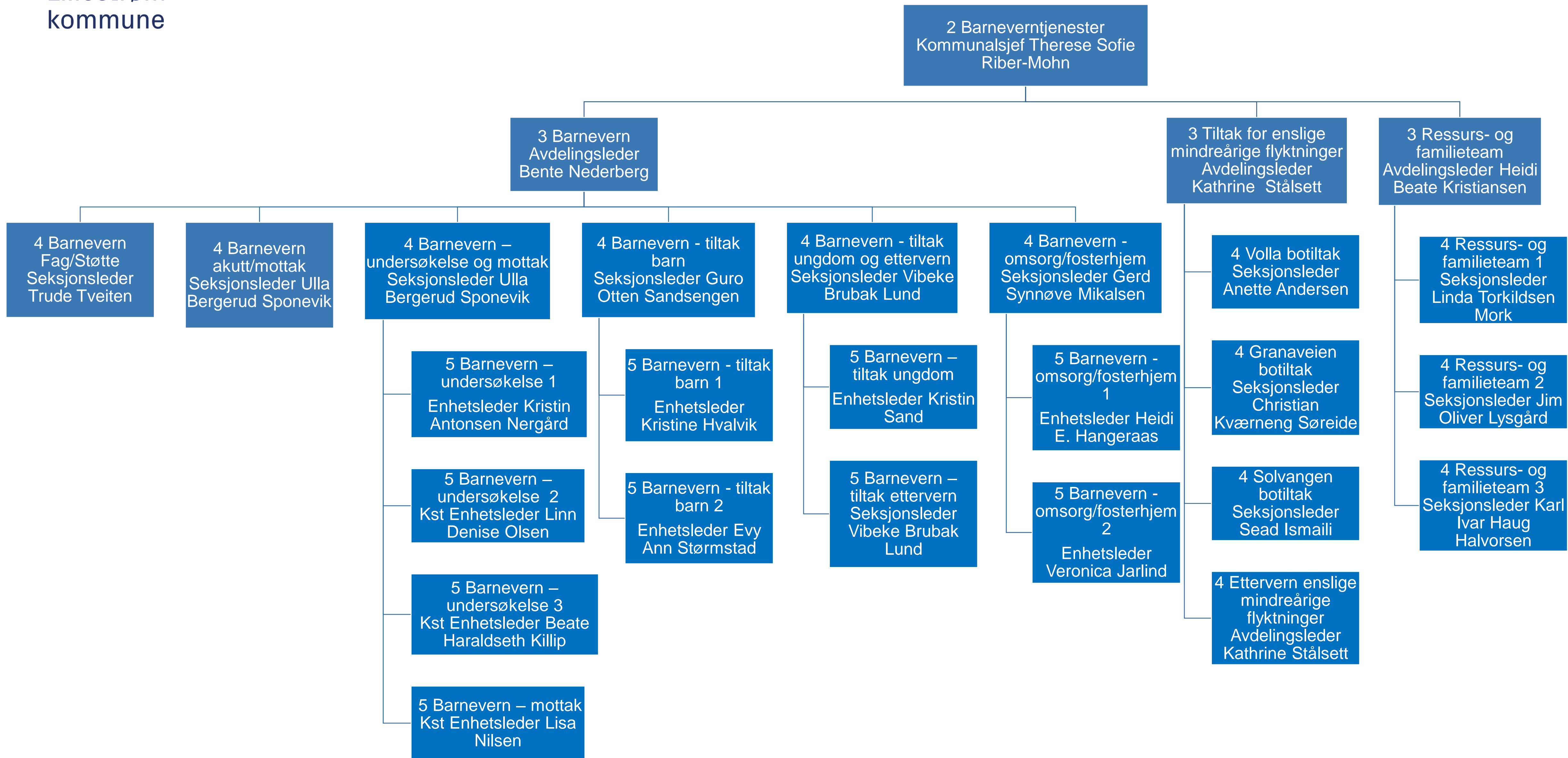
Lillestrøm
kommune



2 Helsetjenester for
barn, unge og familier
Kommunalsjef Ragnhild
Margrethe Ottestad



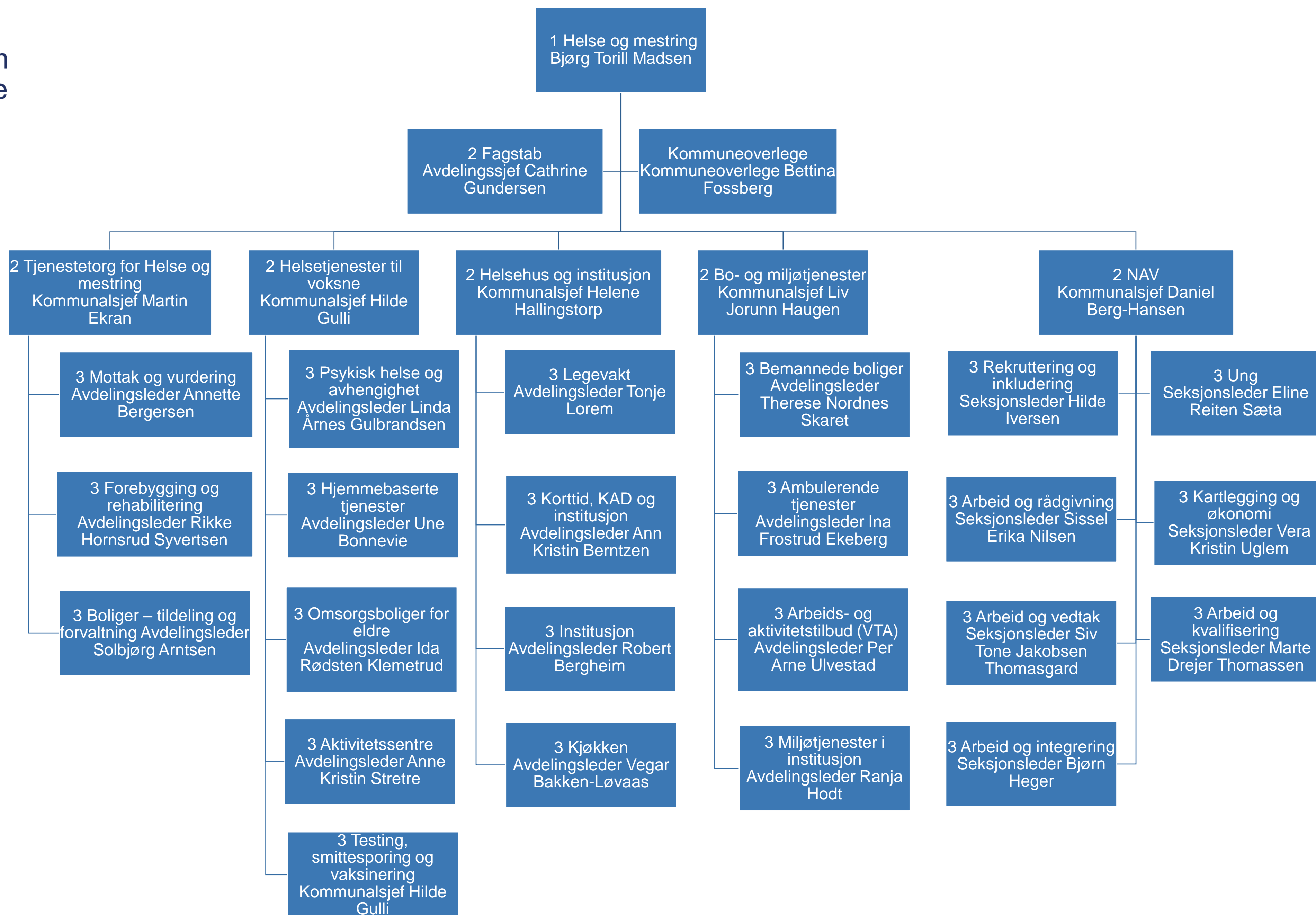
Lillestrøm kommune

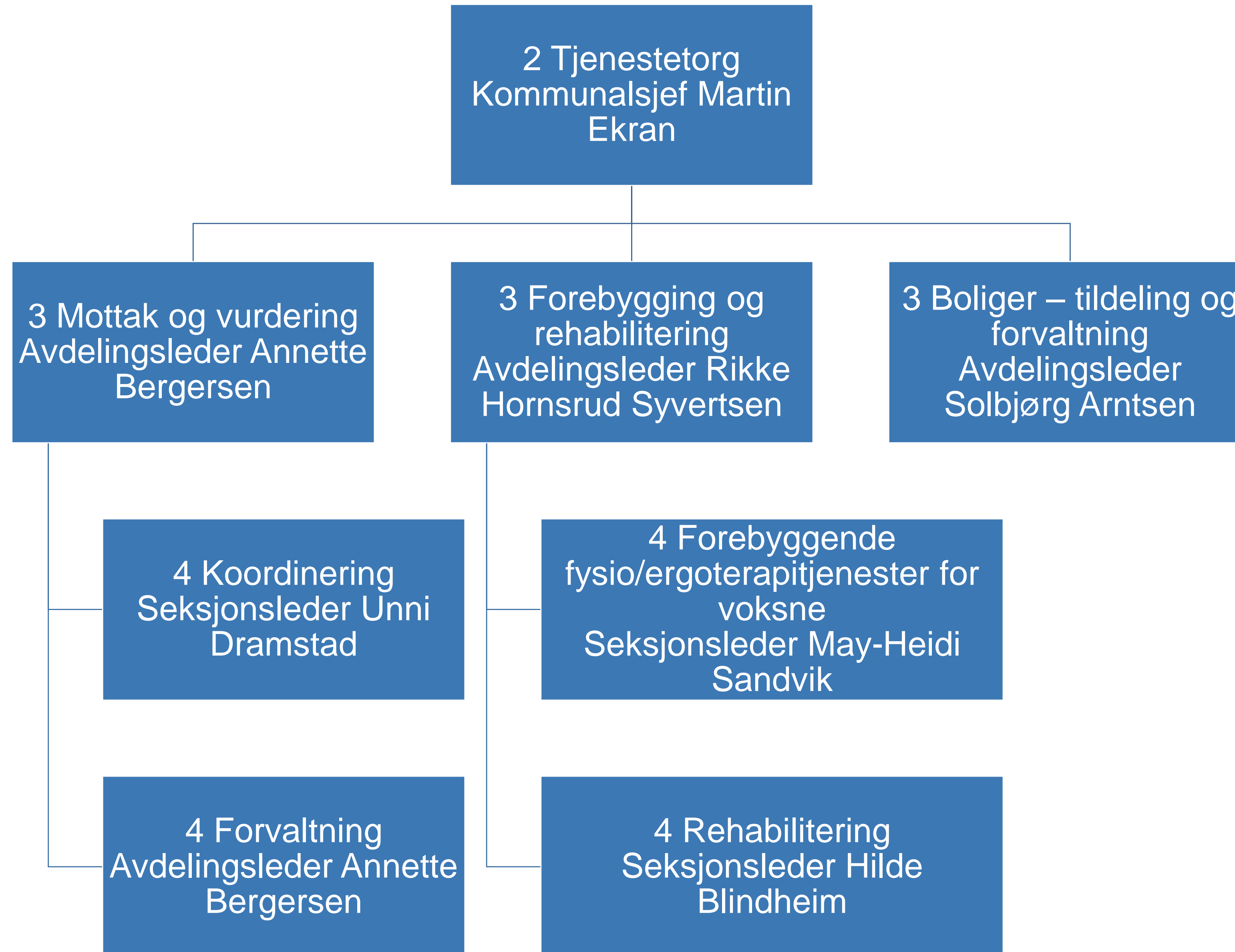


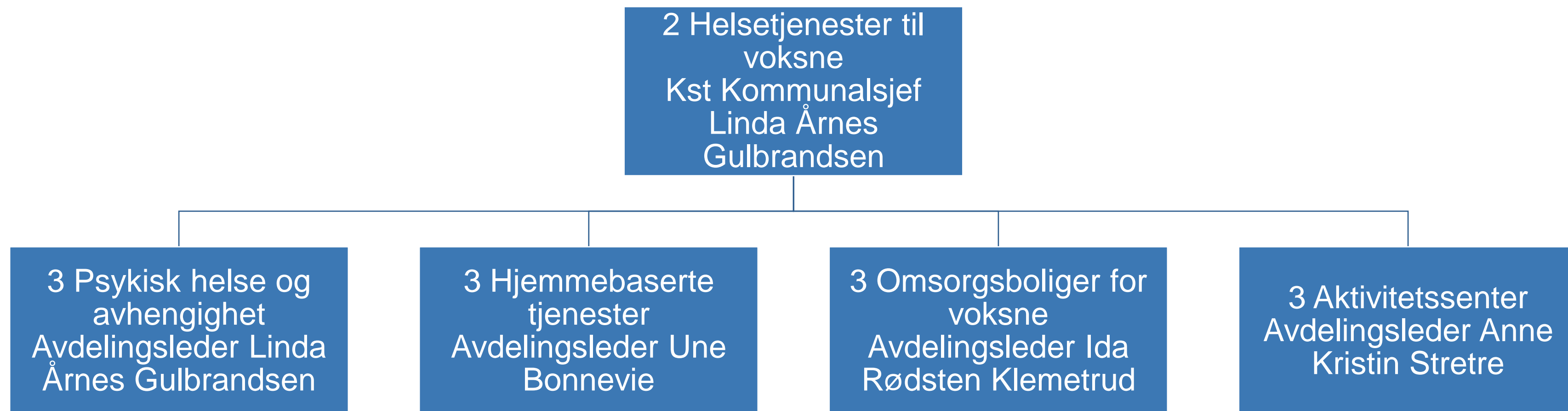
Lillestrøm
kommune

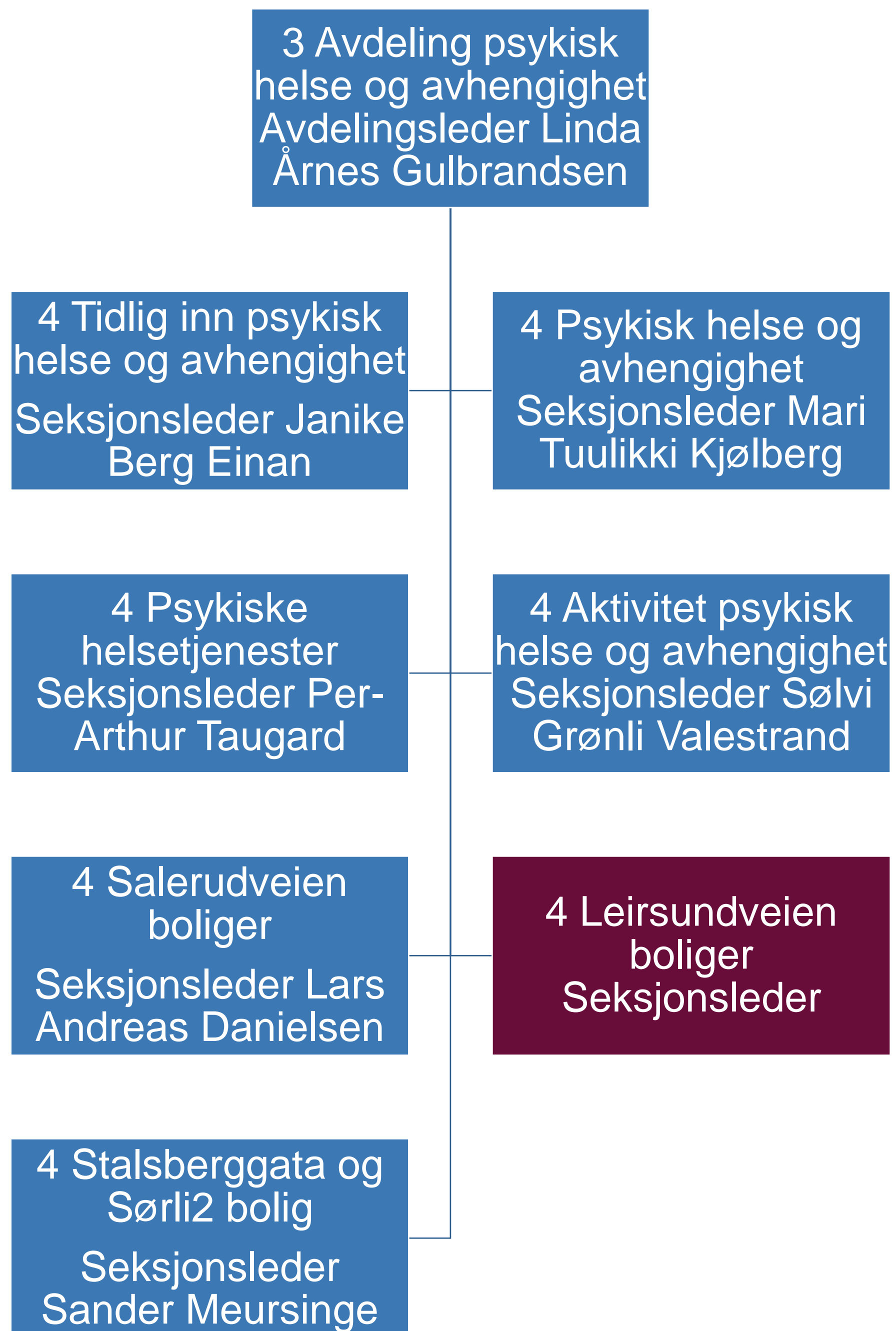
Helse og mestring

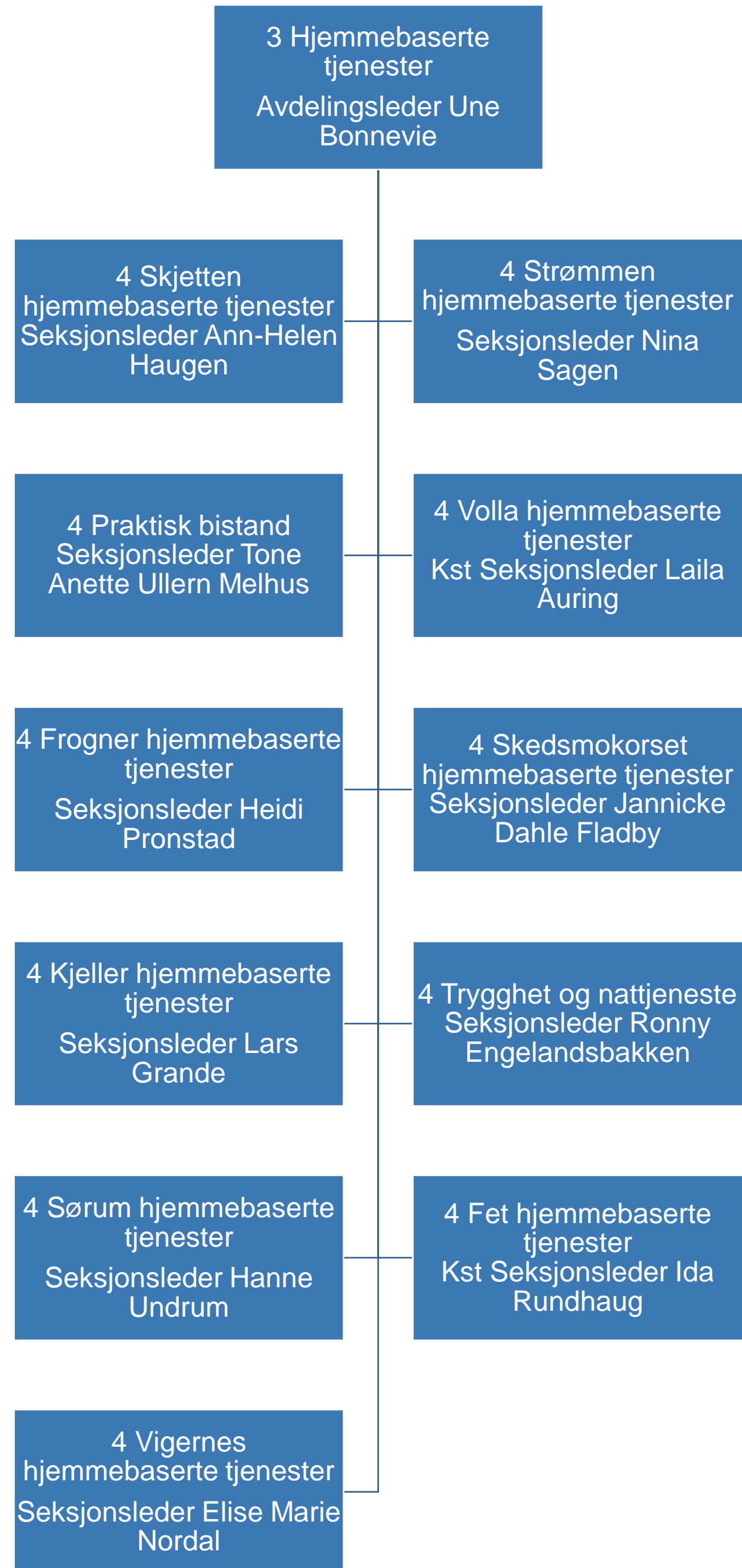


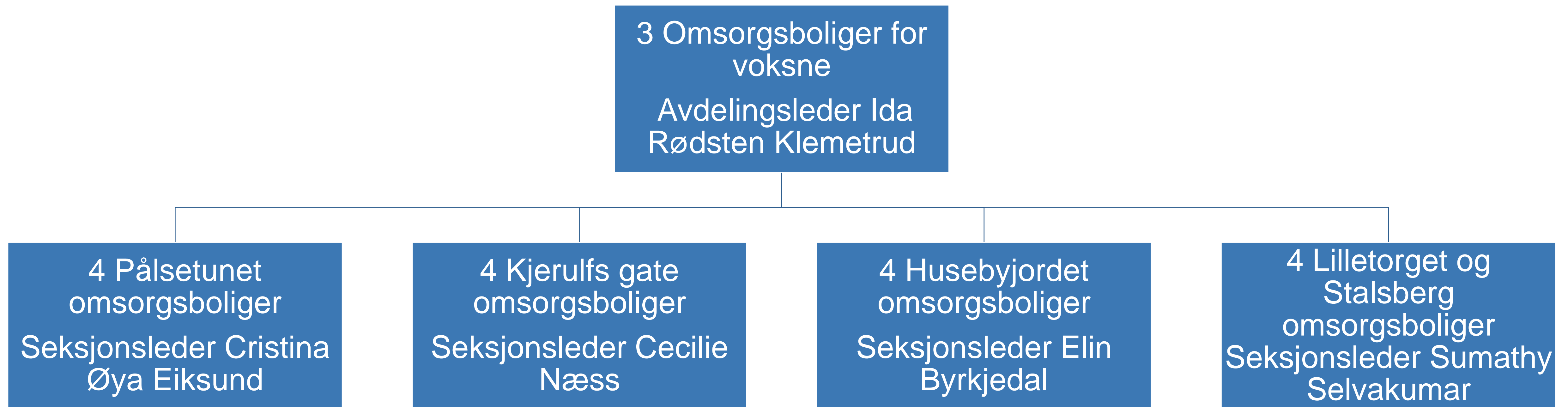


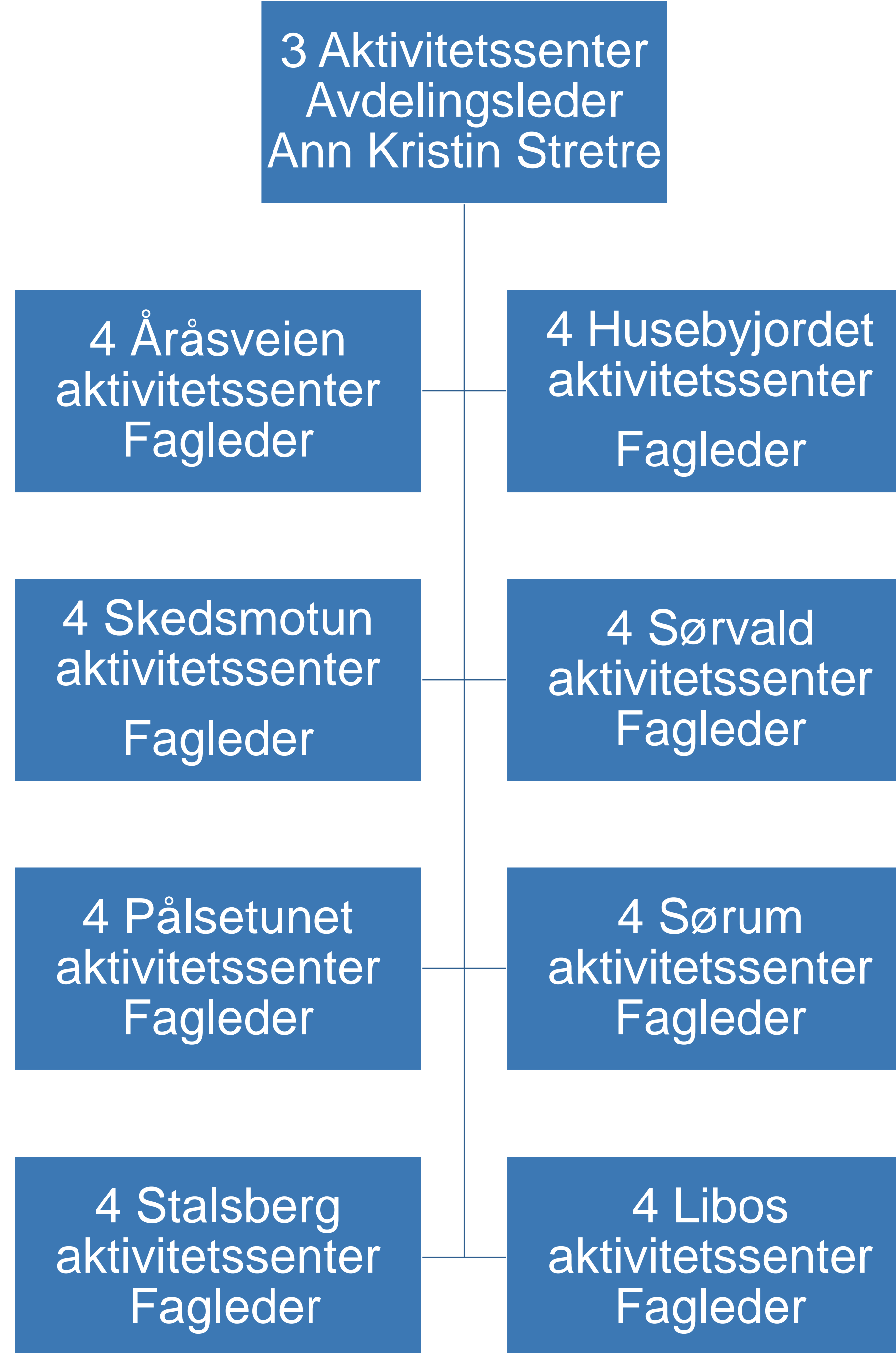










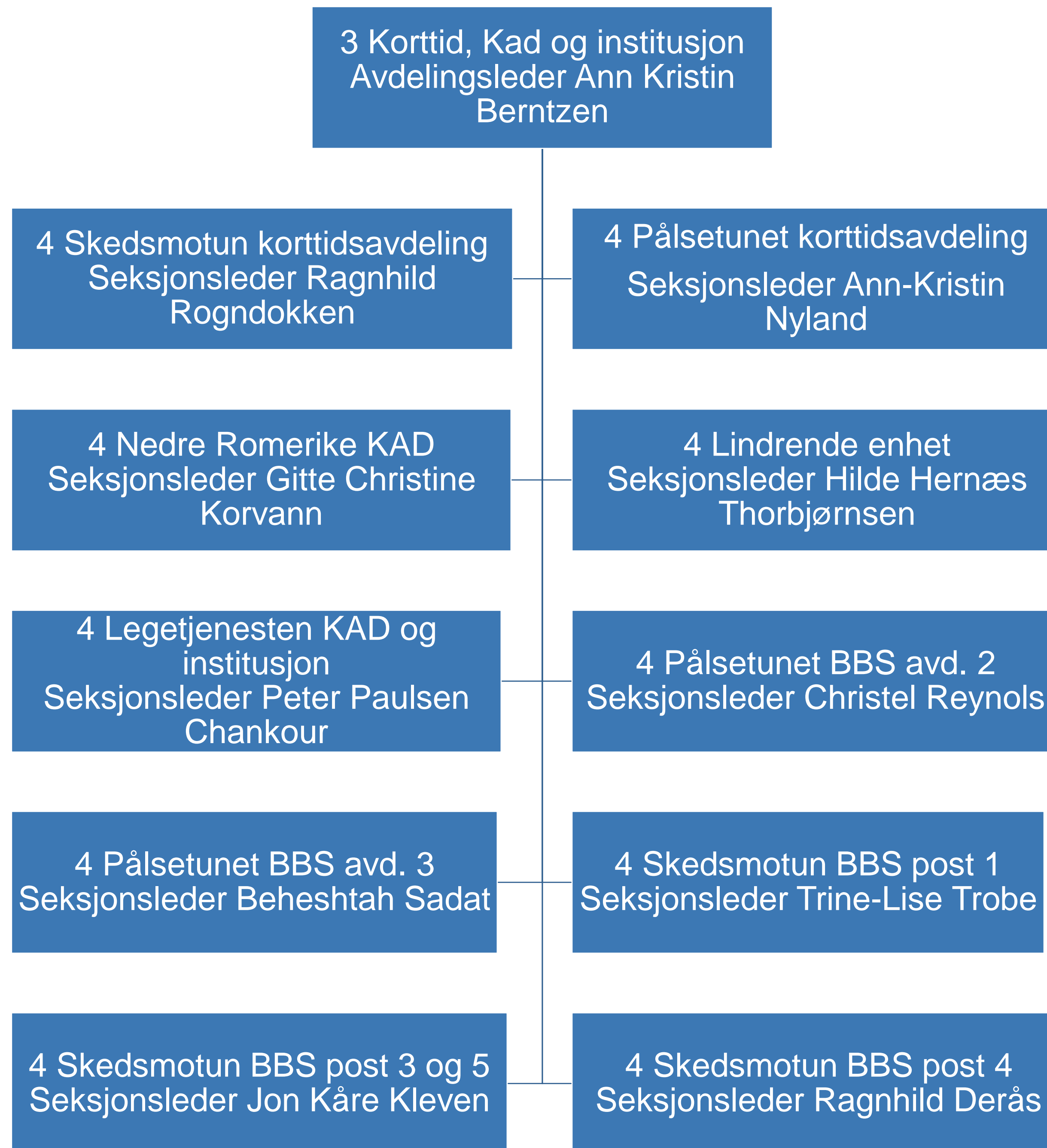




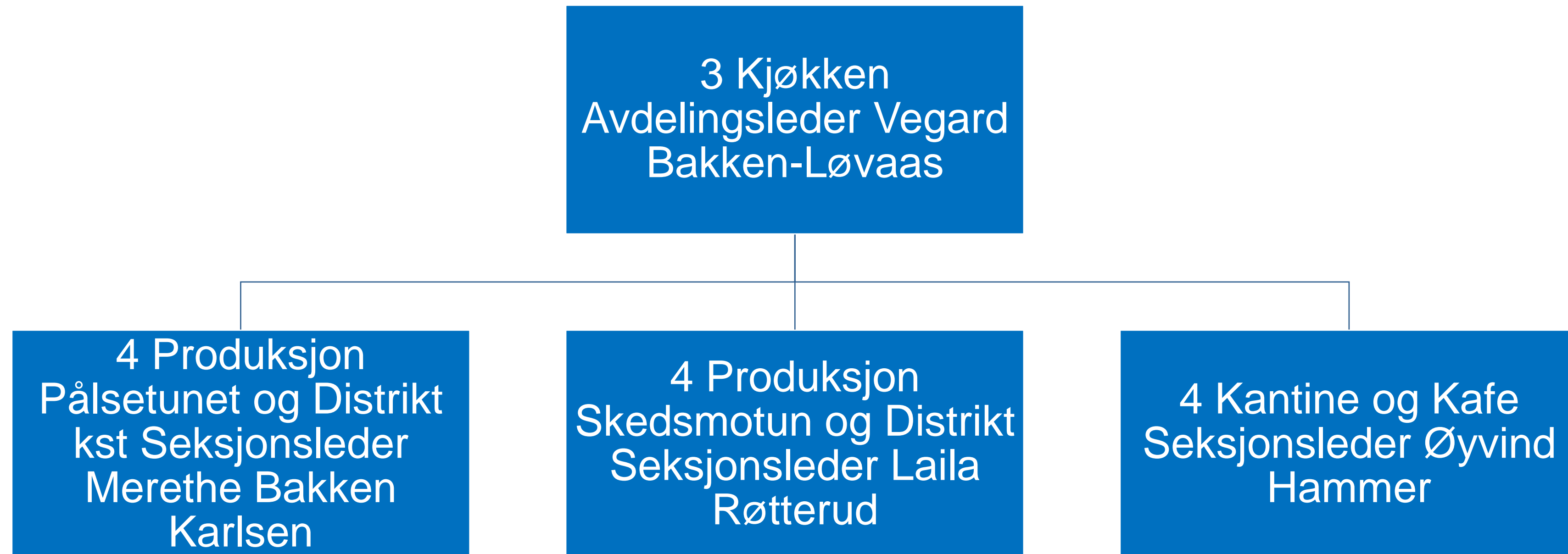
3 Legevakt
Avdelingsleder Tonje
Lorem

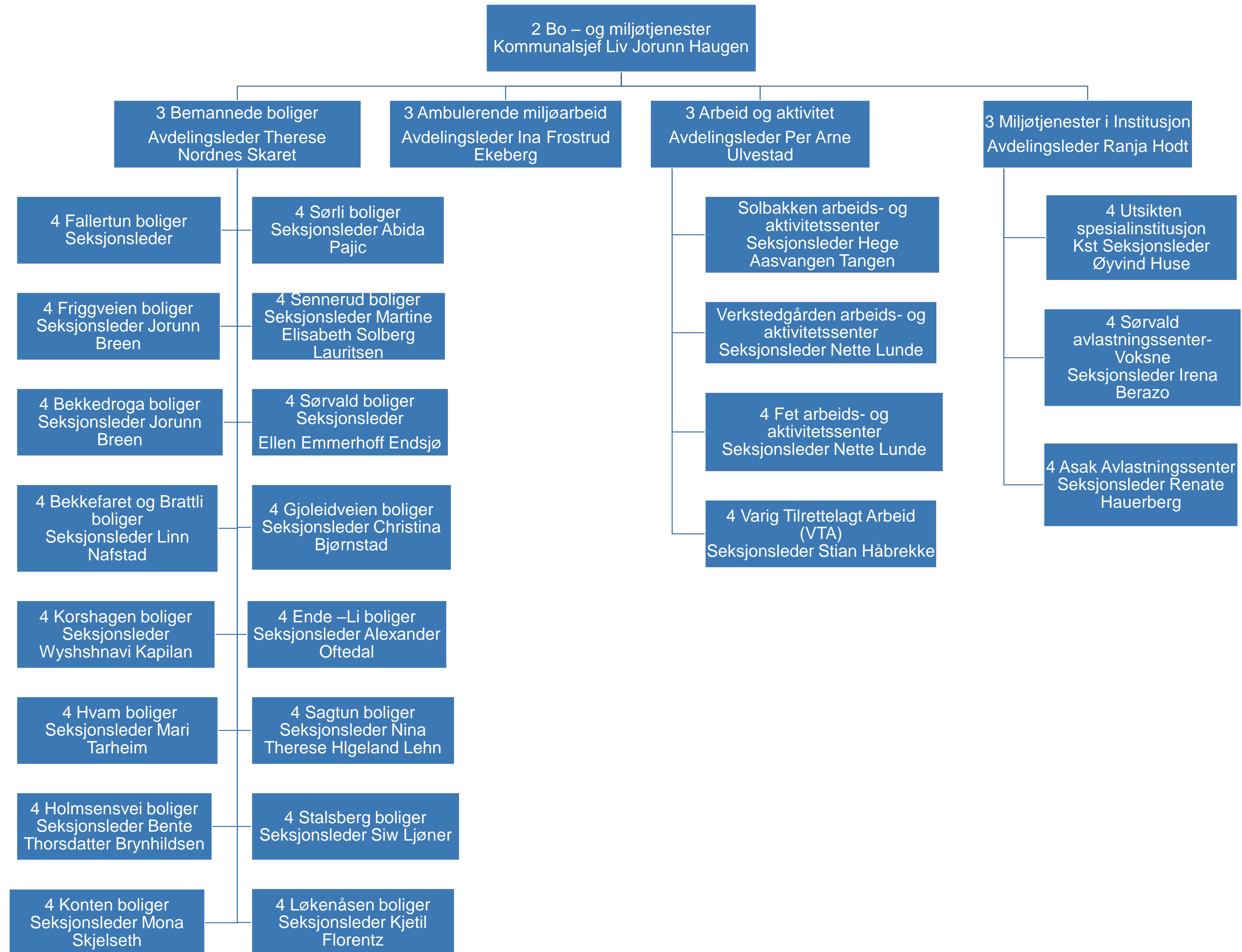
4 Legevakt - operatører
Seksjonsleder Tonje
Cathrine Knarbo

4 Legevakt – leger
Seksjonsleder Kiana
Kasiri











Lillestrøm
kommune

Kultur, miljø og samfunn



Lillestrøm kommune

