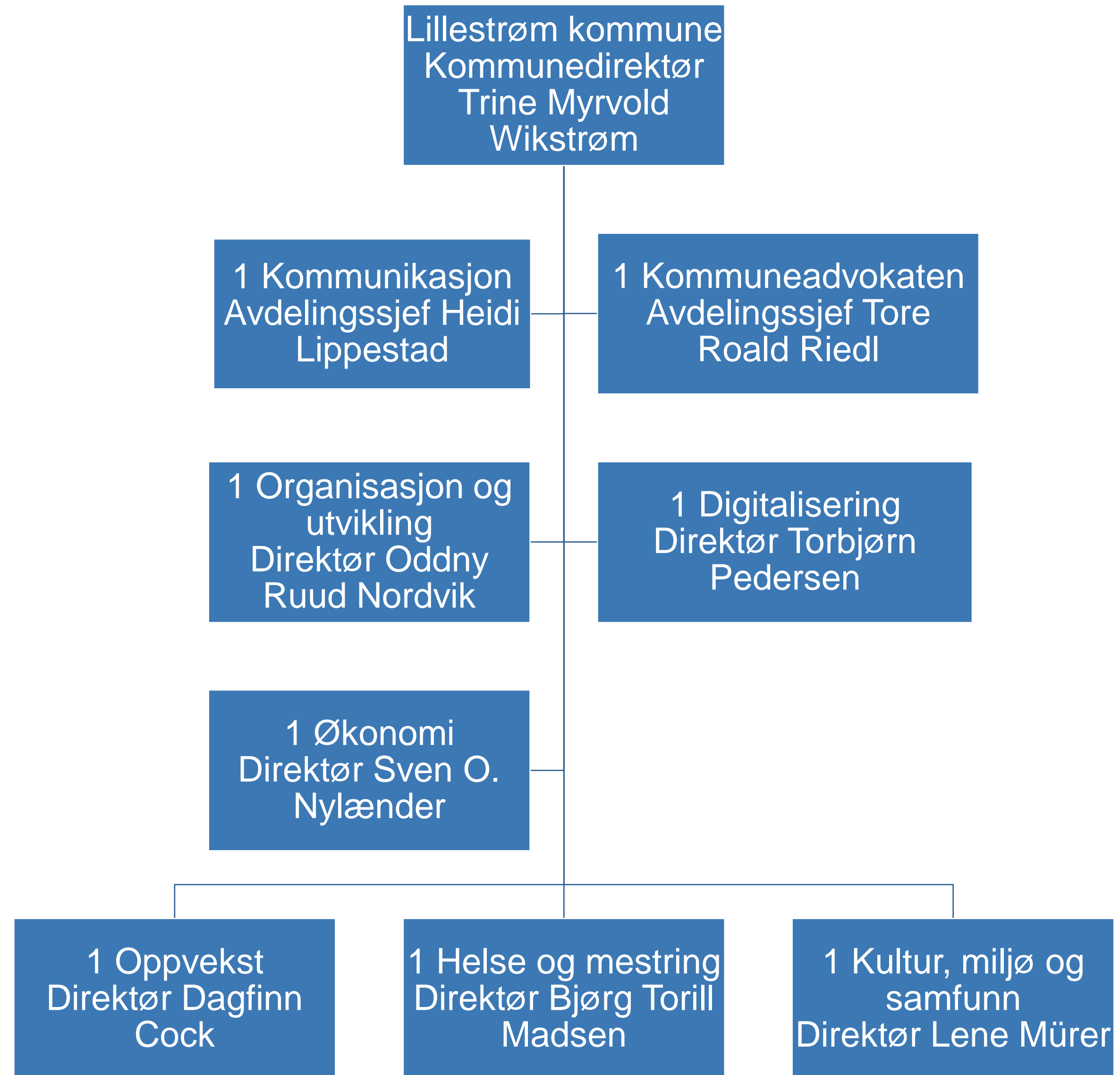


Lillestrøm  
kommune

# Lillestrøm kommune Organisasjonskart

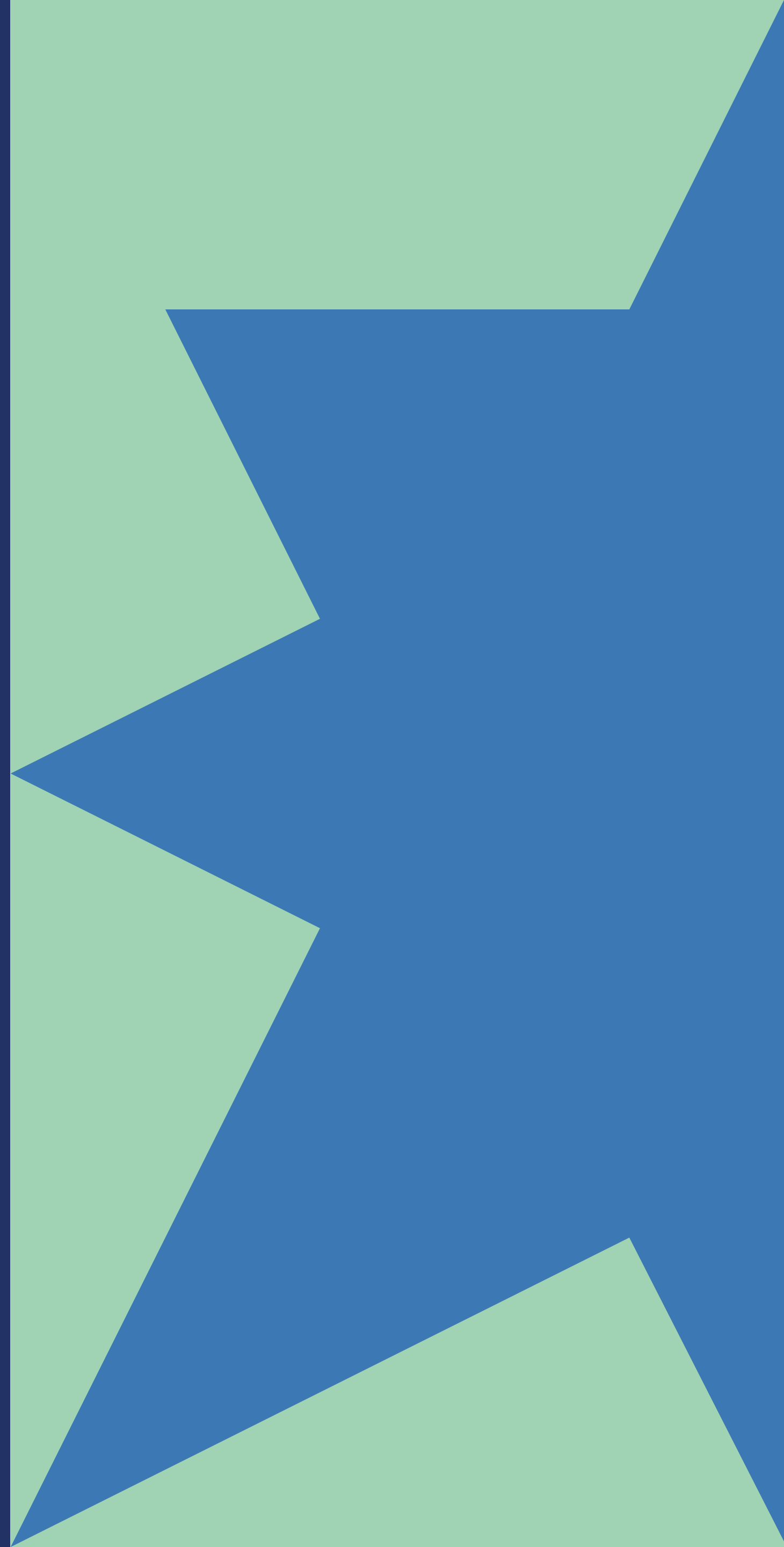
Versjon 01.12.2022





Lillestrøm  
kommune

# Stabsavdelingene



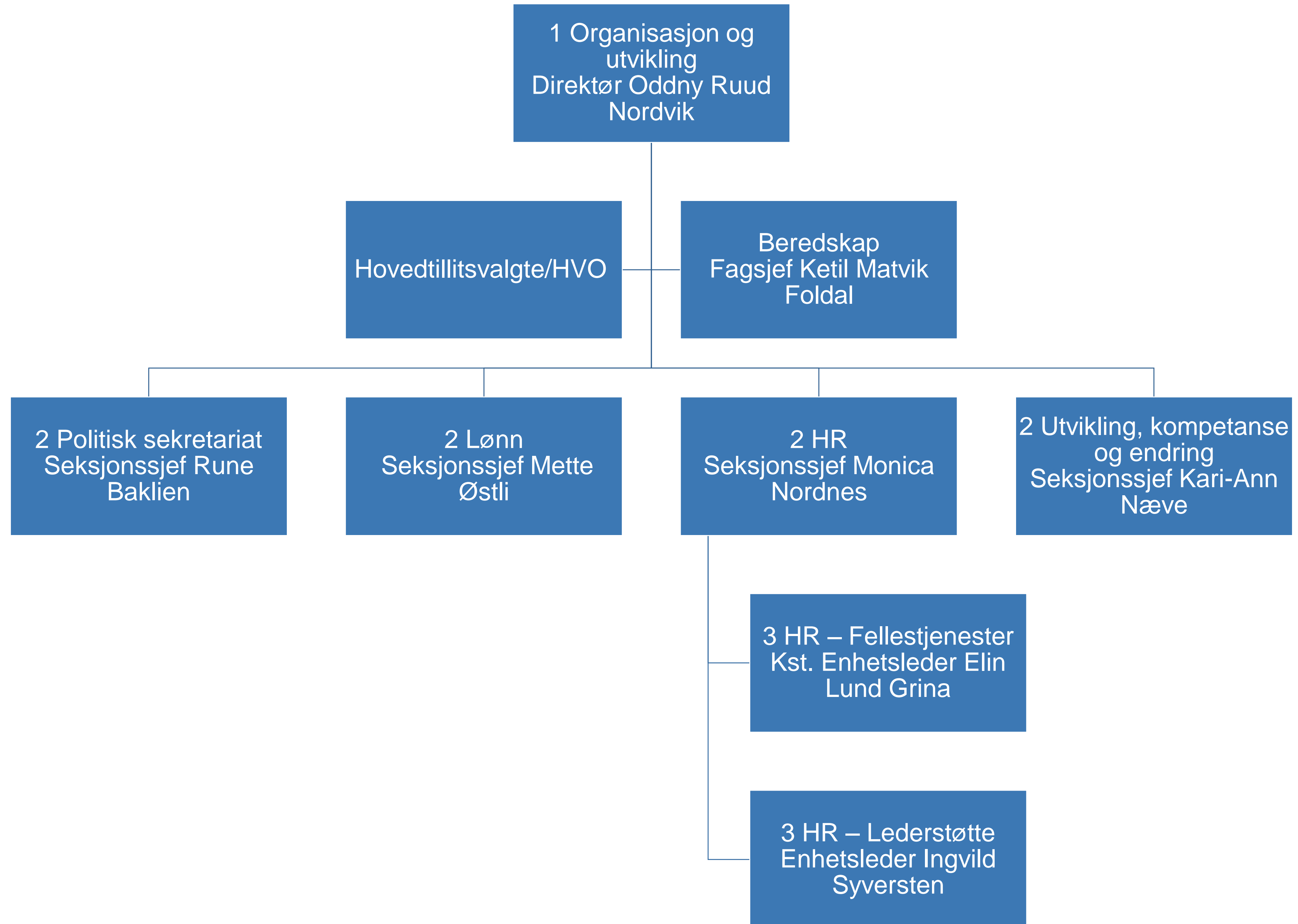
1 Økonomi  
Direktør Sven O.  
Nylænder

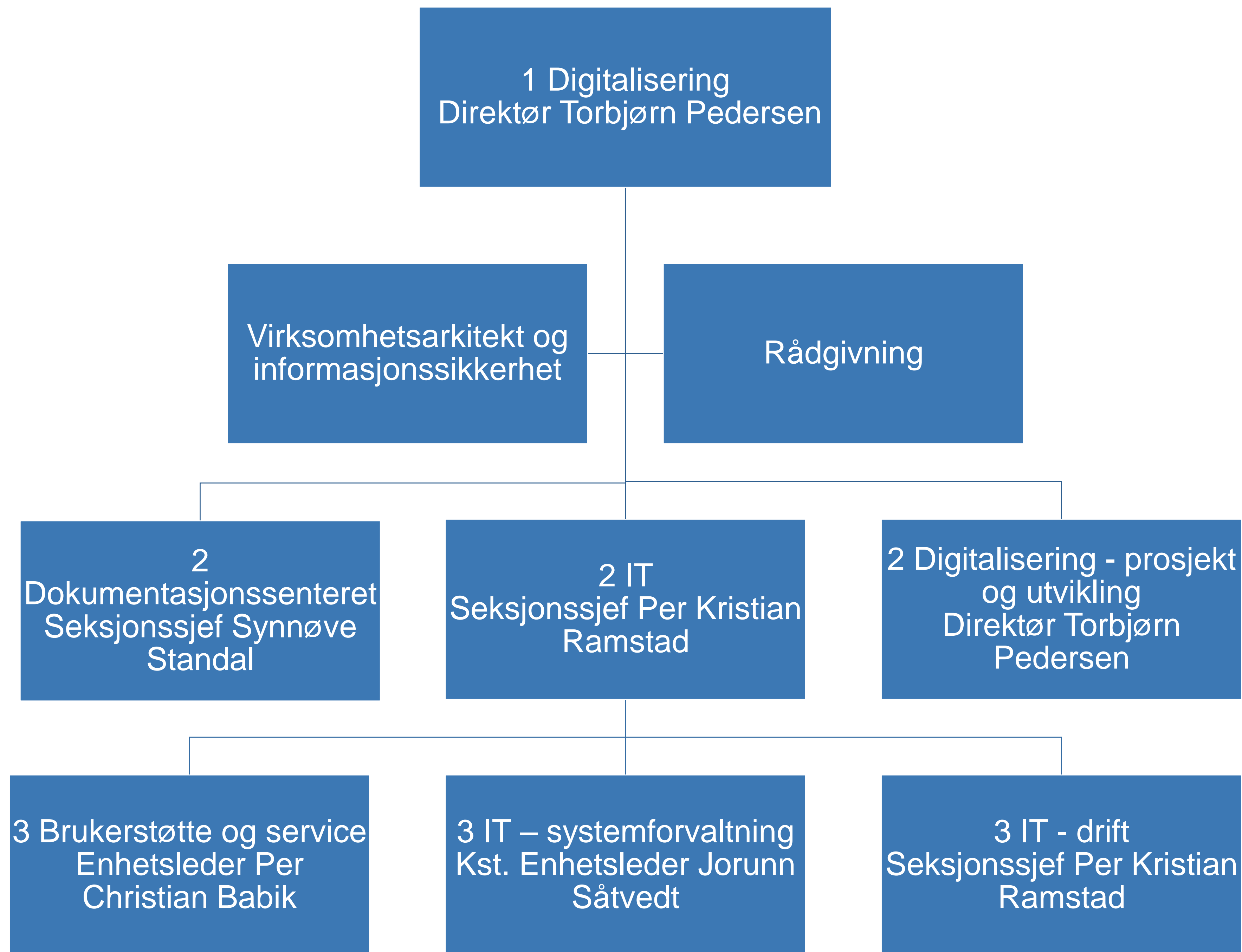
Fagstab

2 Innkjøp  
Seksjonssjef Carl  
Henriksen

2 Regnskap  
Seksjonssjef Mona  
Berntsen

2 Økonomi og  
virksomhetsstyring  
Seksjonssjef  
Anders Taxt



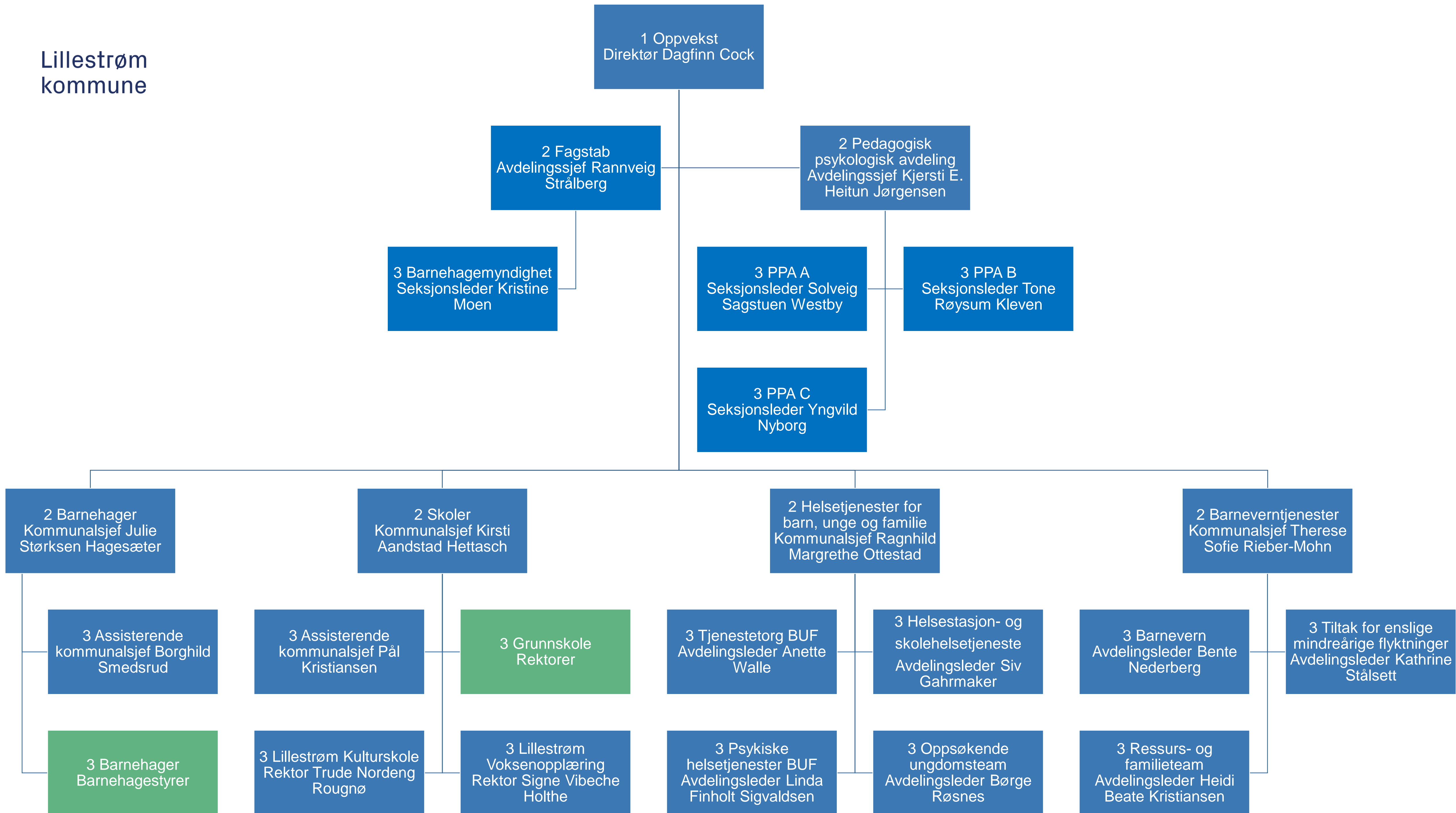


Lillestrøm  
kommune

# Oppvekst



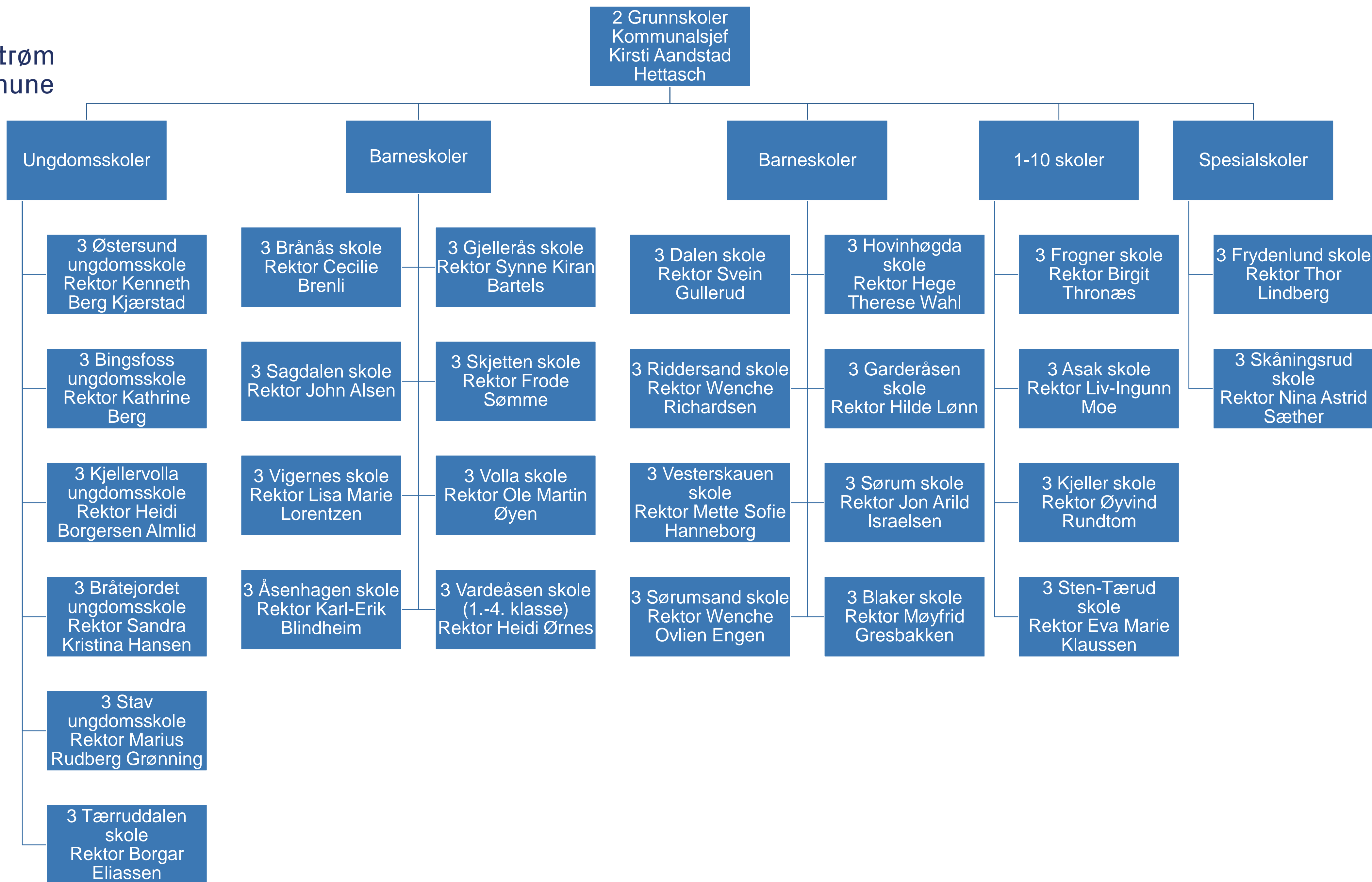
Lillestrøm  
kommune



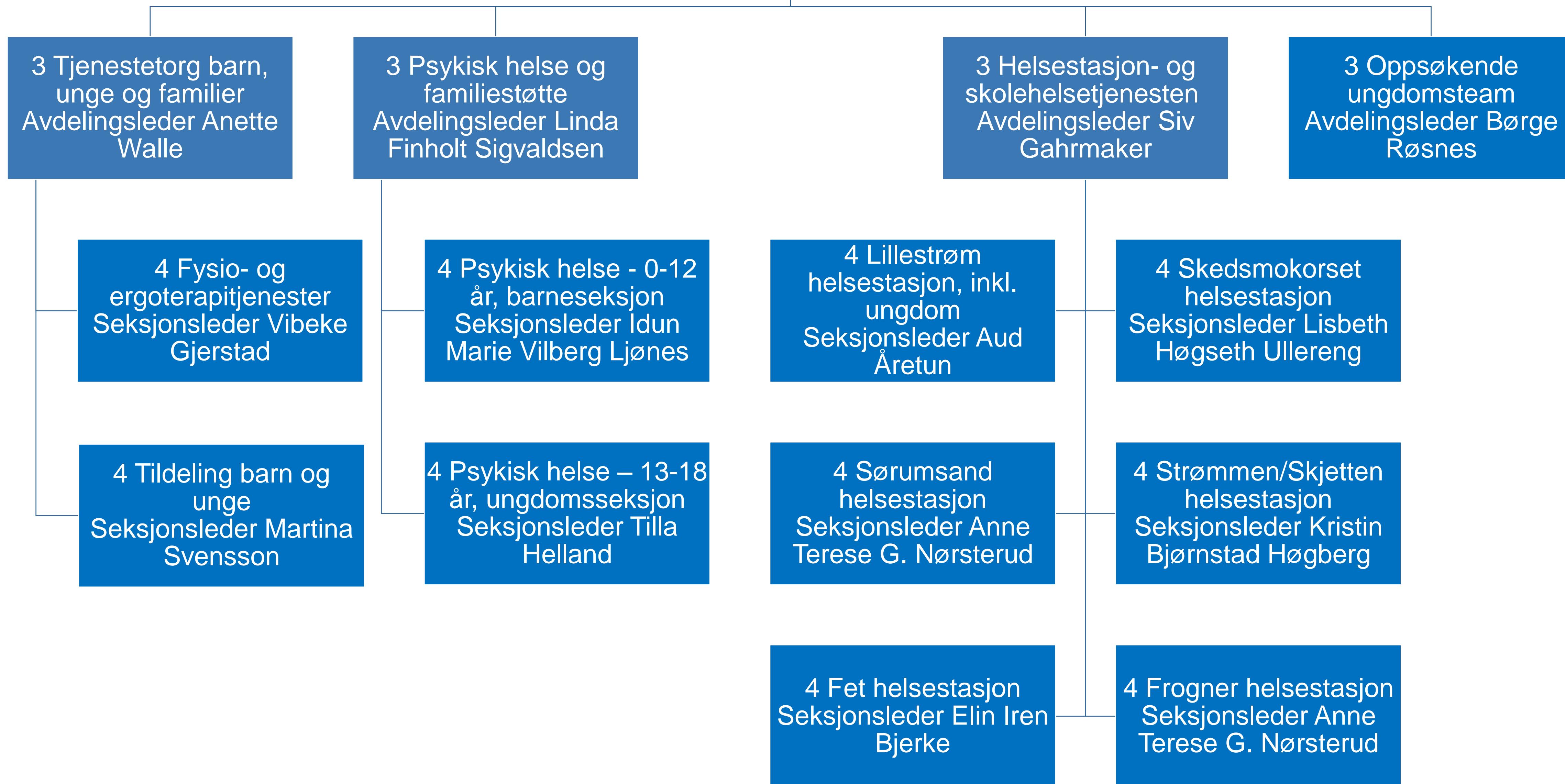


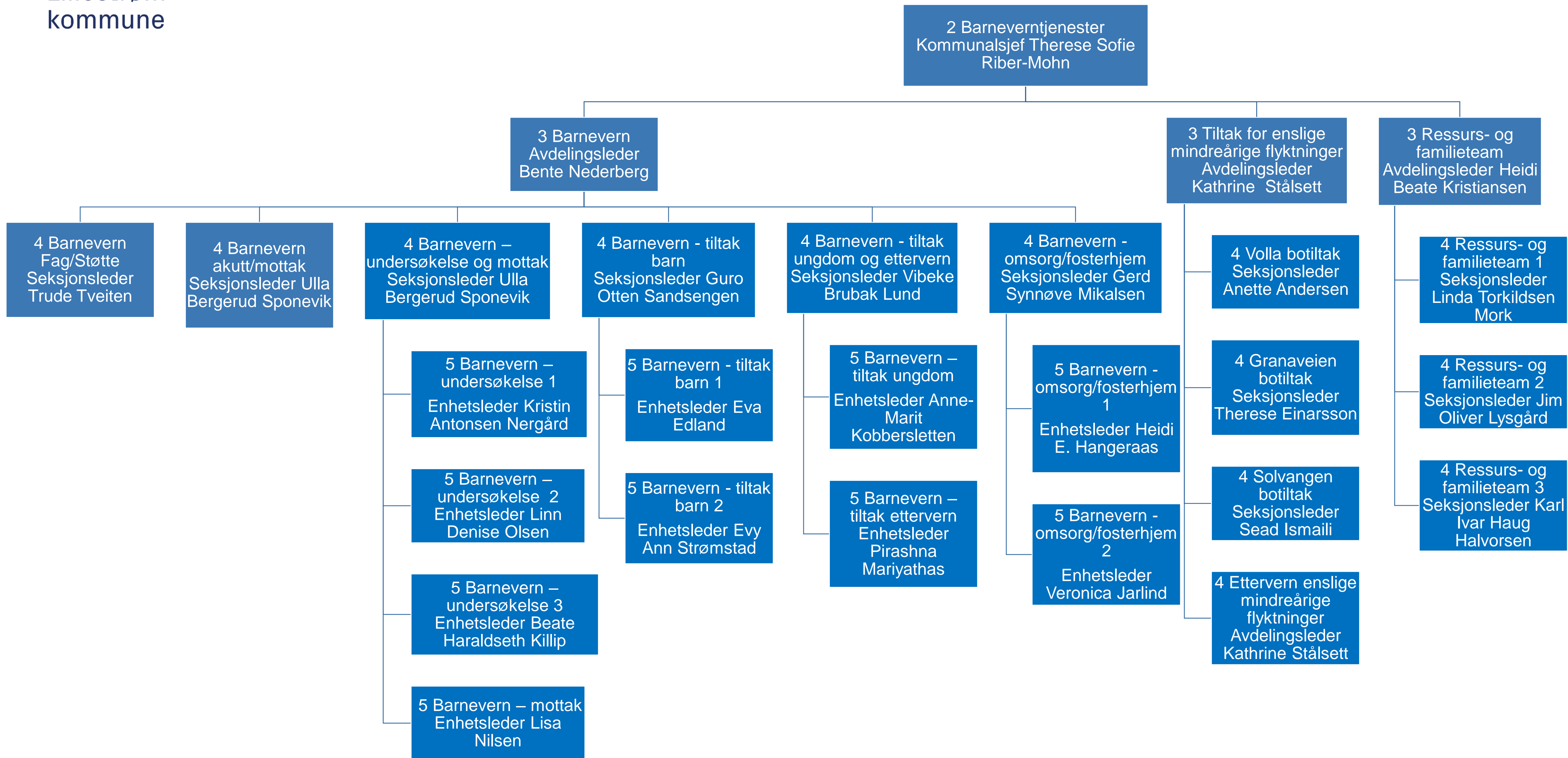


Lillestrøm  
kommune



2 Helsetjenester for  
barn, unge og familier  
Kommunalsjef Ragnhild  
Margrethe Ottestad



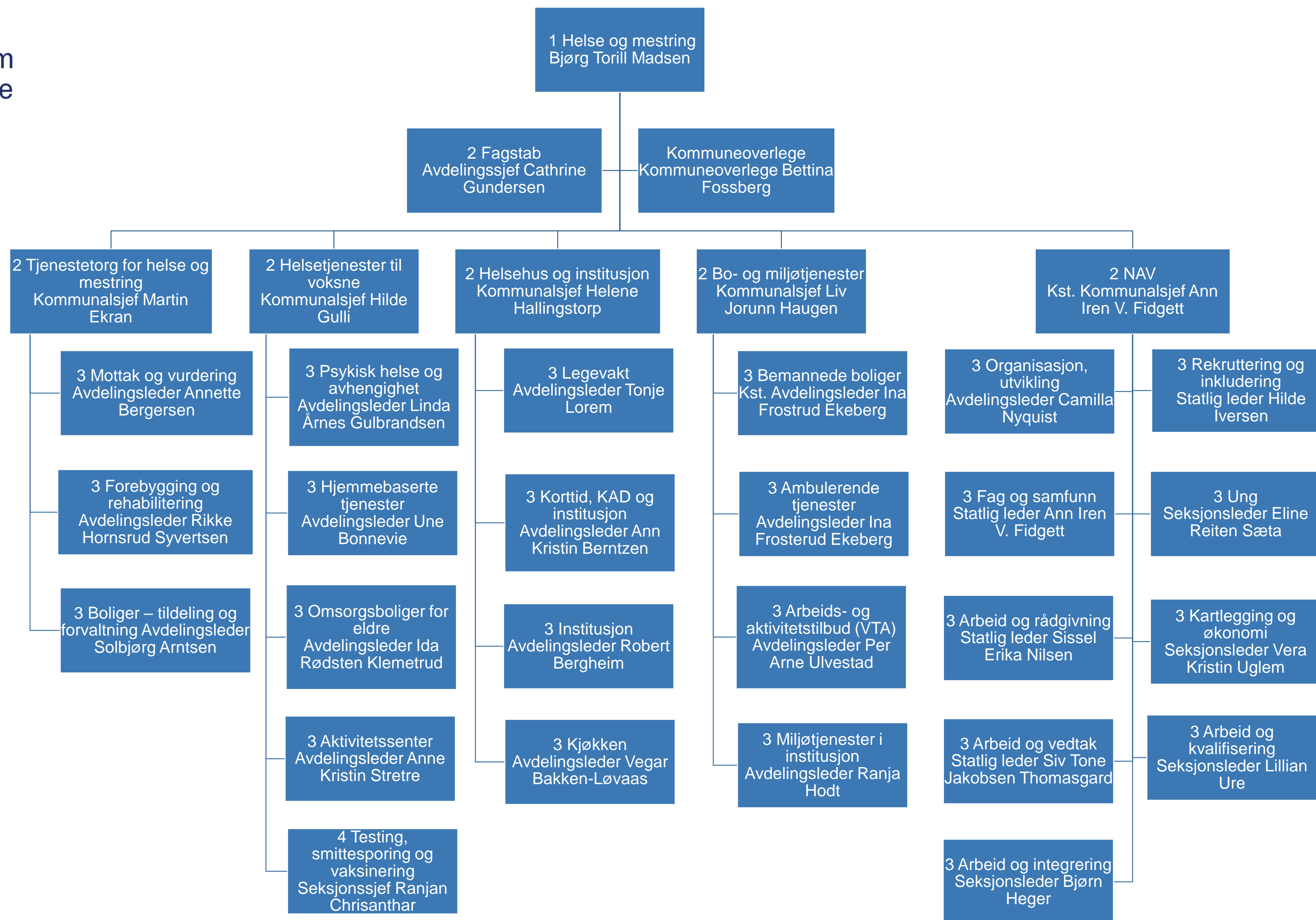


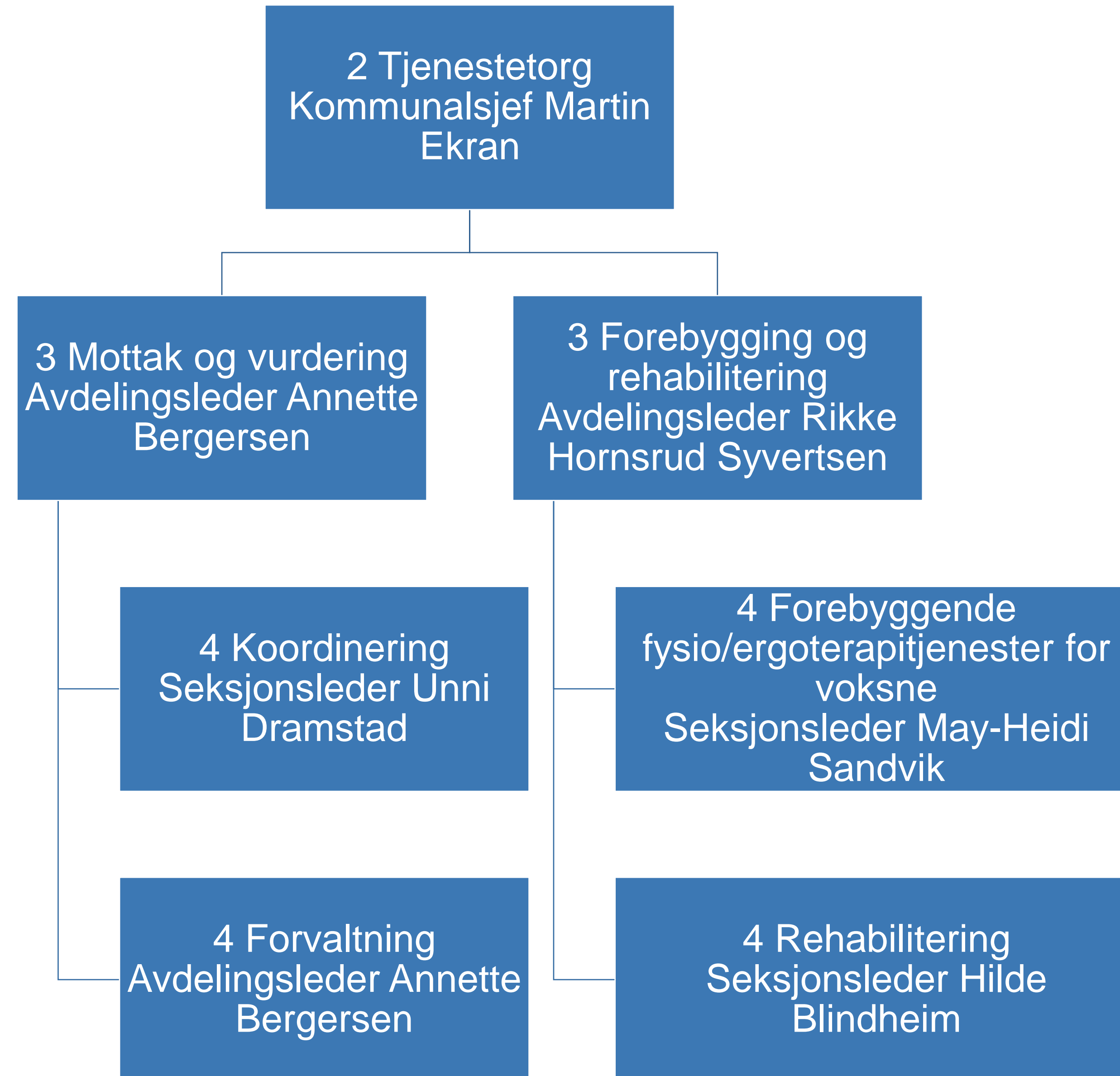
Lillestrøm  
kommune

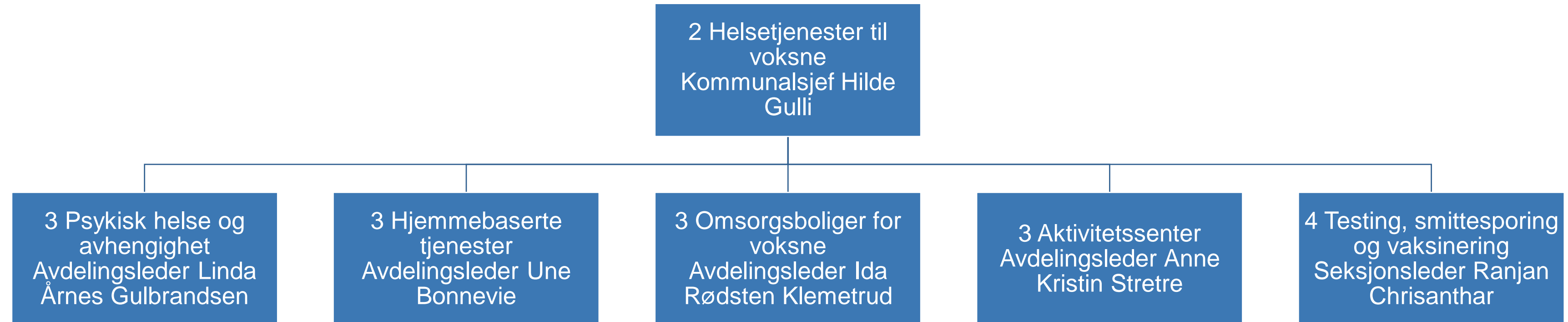
# Helse og mestring



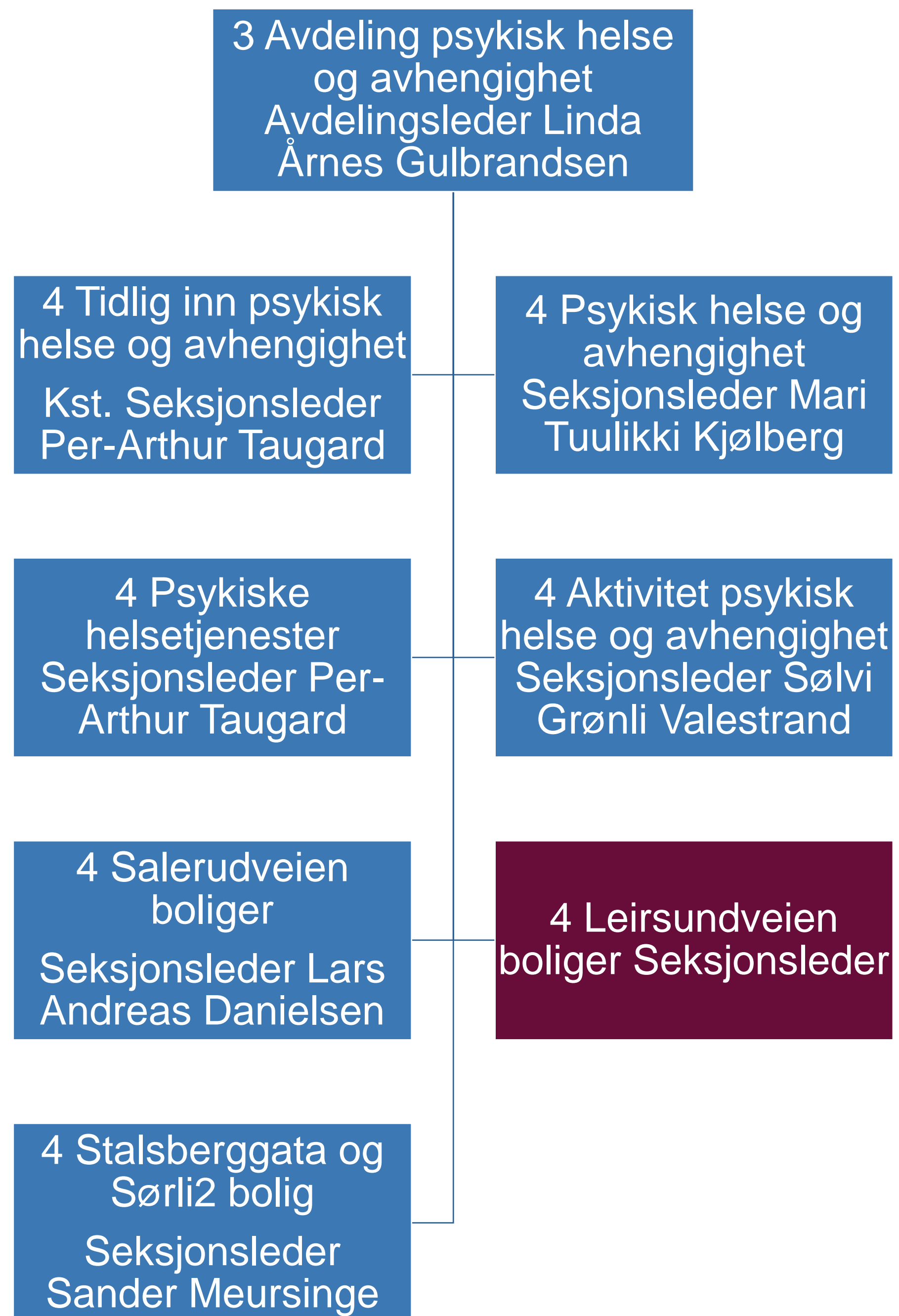


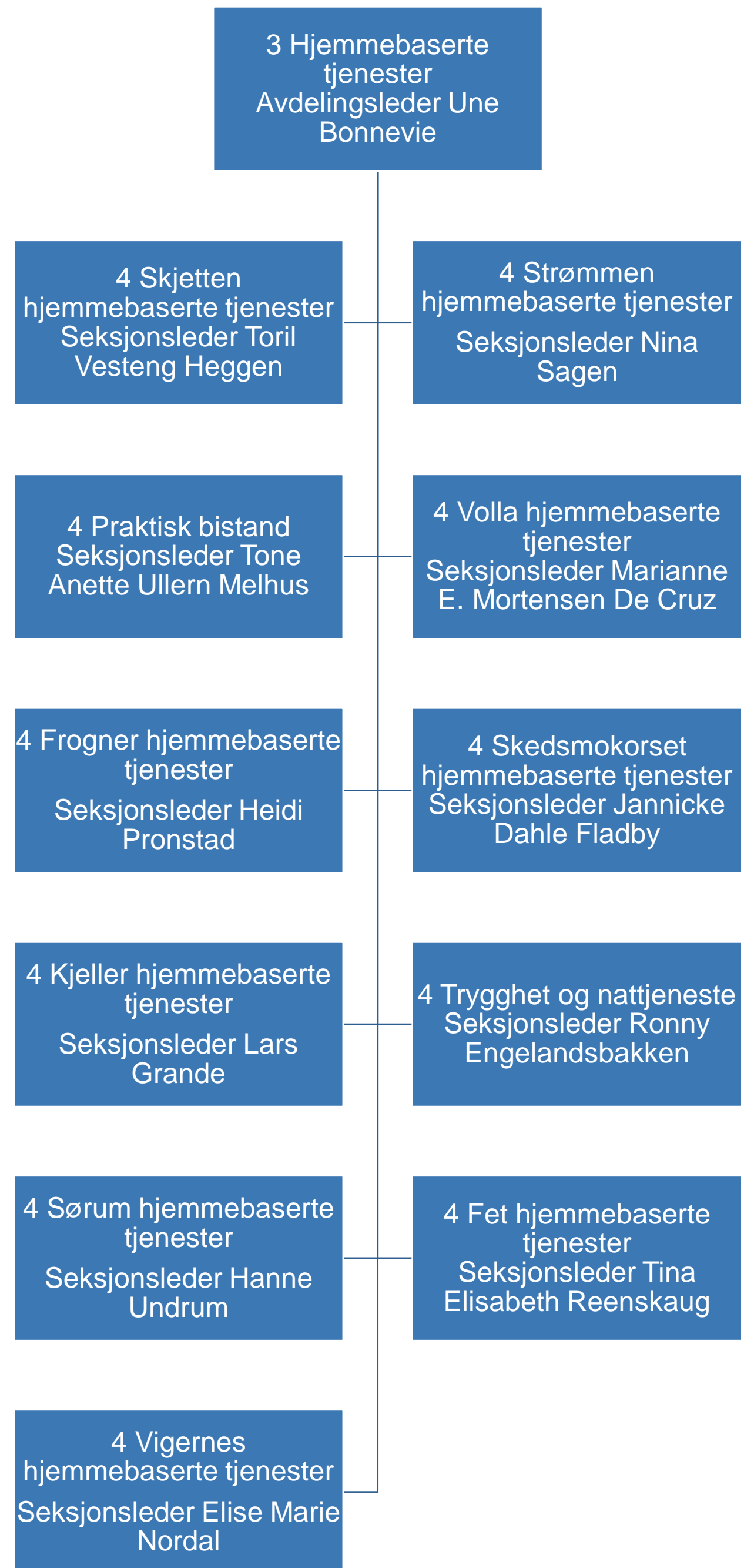


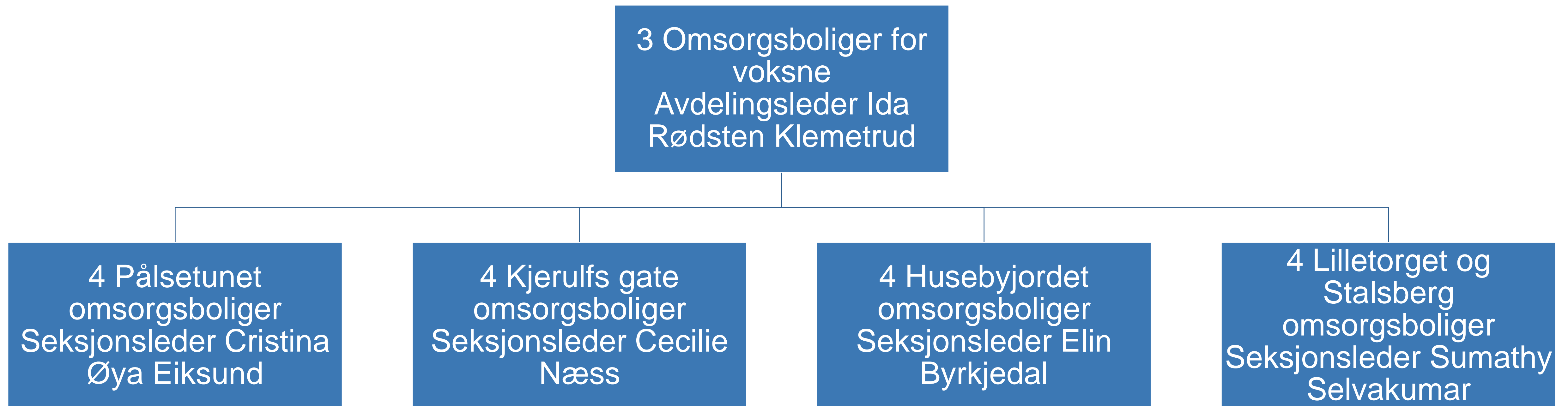


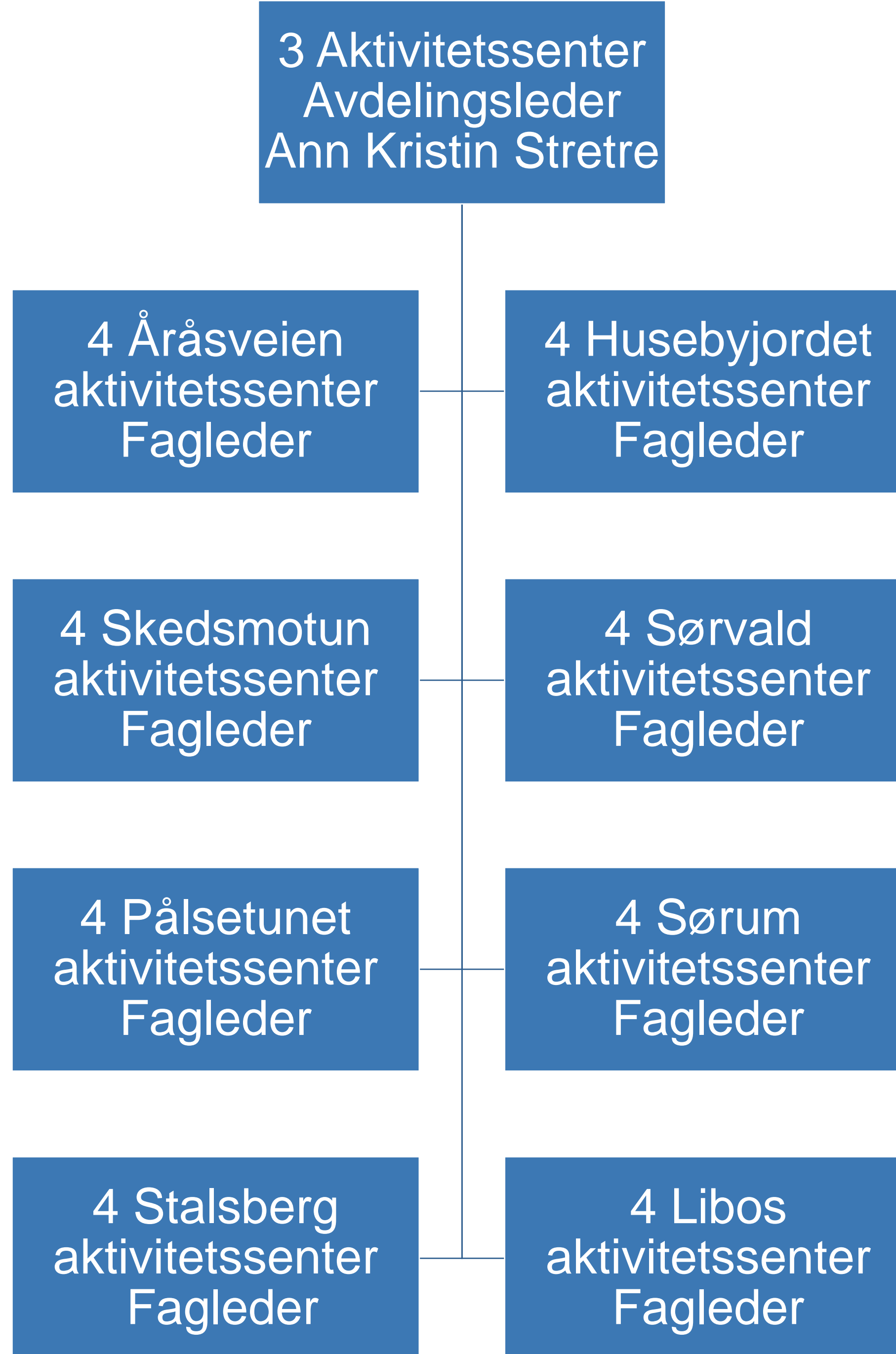


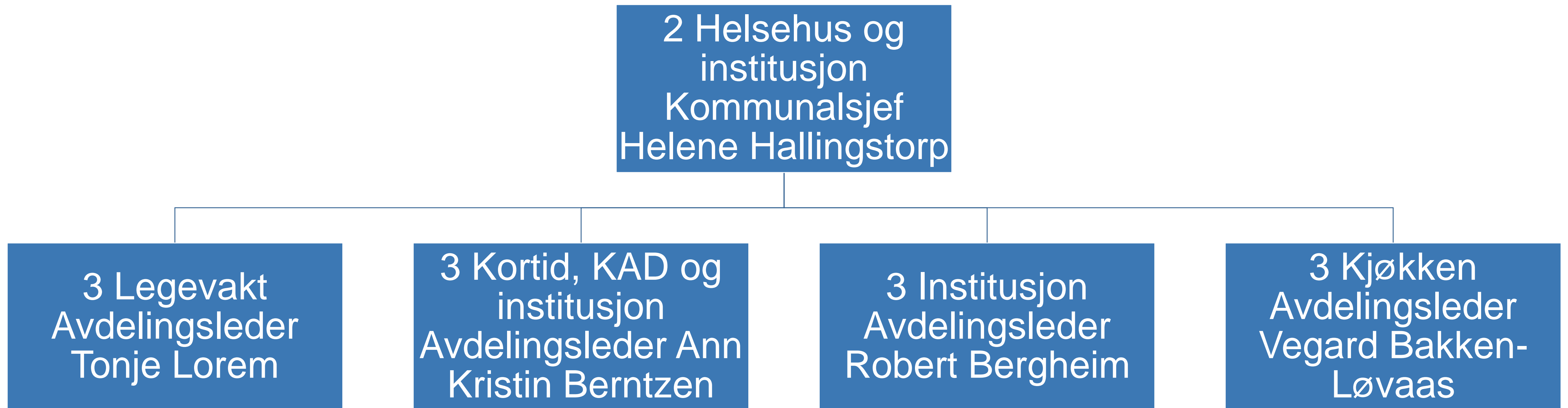










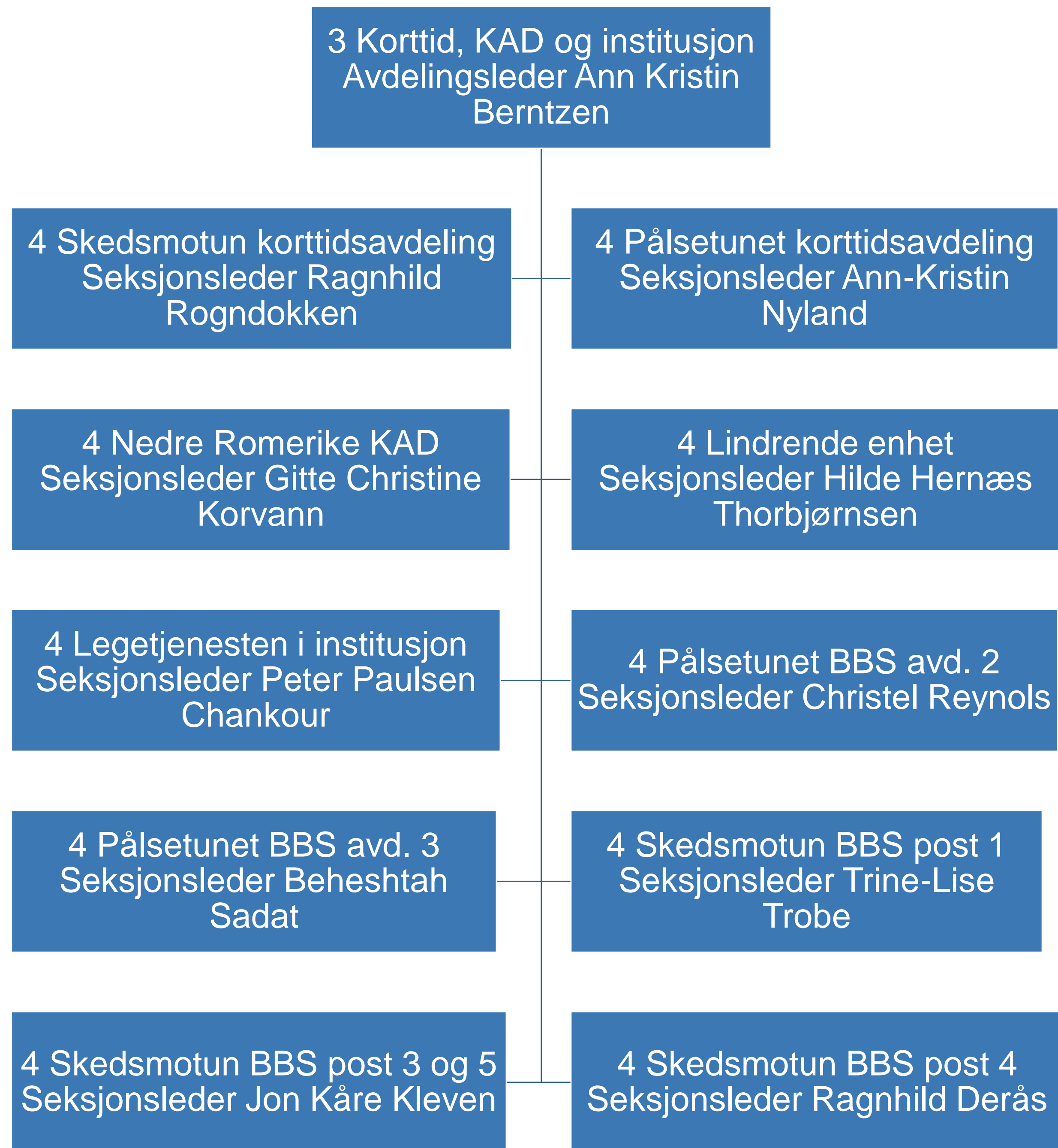


3 Legevakt  
Avdelingsleder Tonje  
Lorem

```
graph TD; A["3 Legevakt  
Avdelingsleder Tonje  
Lorem"] --- B["4 Legevakt - operatører  
Seksjonsleder Tonje  
Cathrine Knarbo"]; A --- C["4 Legevakt – leger  
Seksjonsleder Kiana  
Kasiri"];
```

4 Legevakt - operatører  
Seksjonsleder Tonje  
Cathrine Knarbo

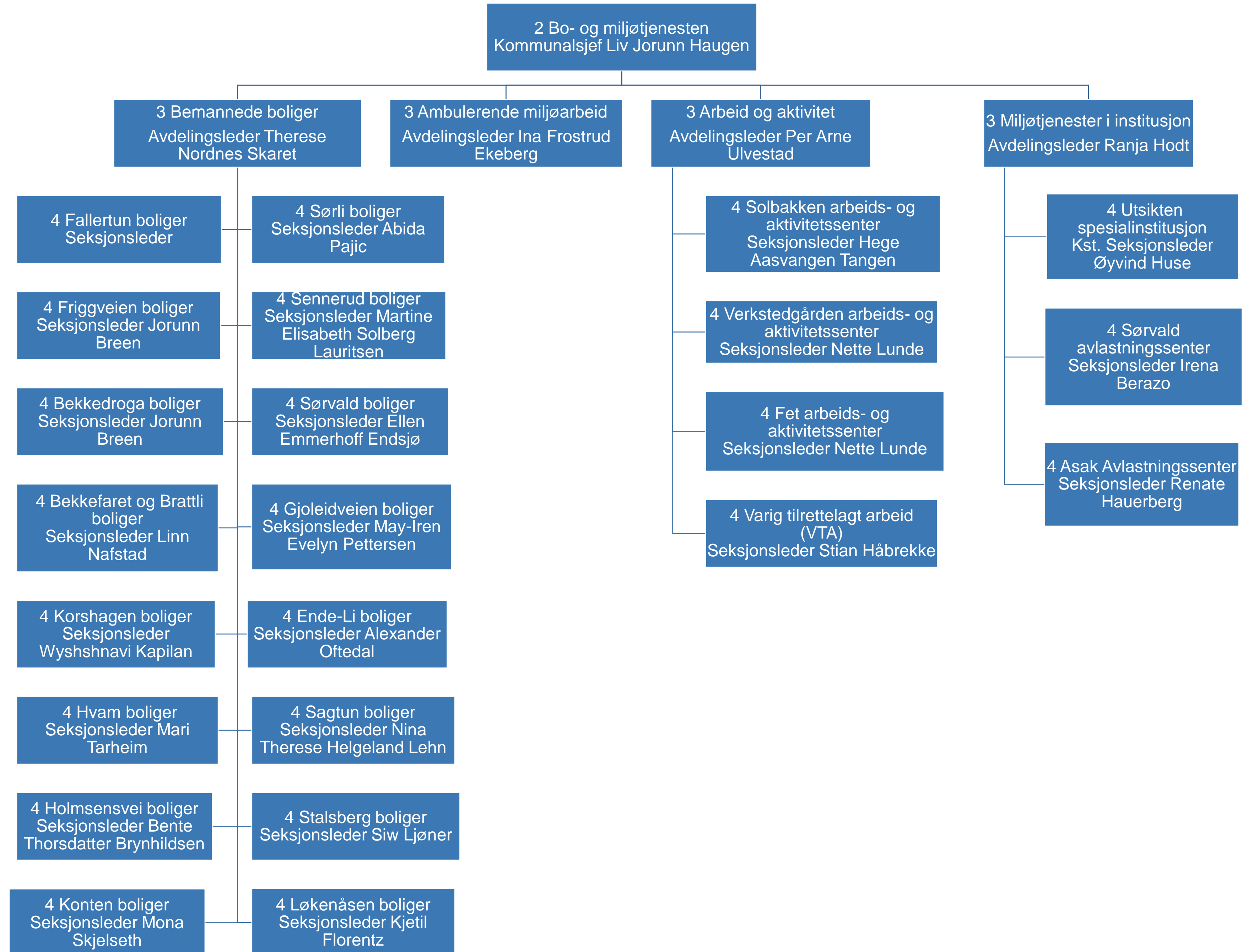
4 Legevakt – leger  
Seksjonsleder Kiana  
Kasiri





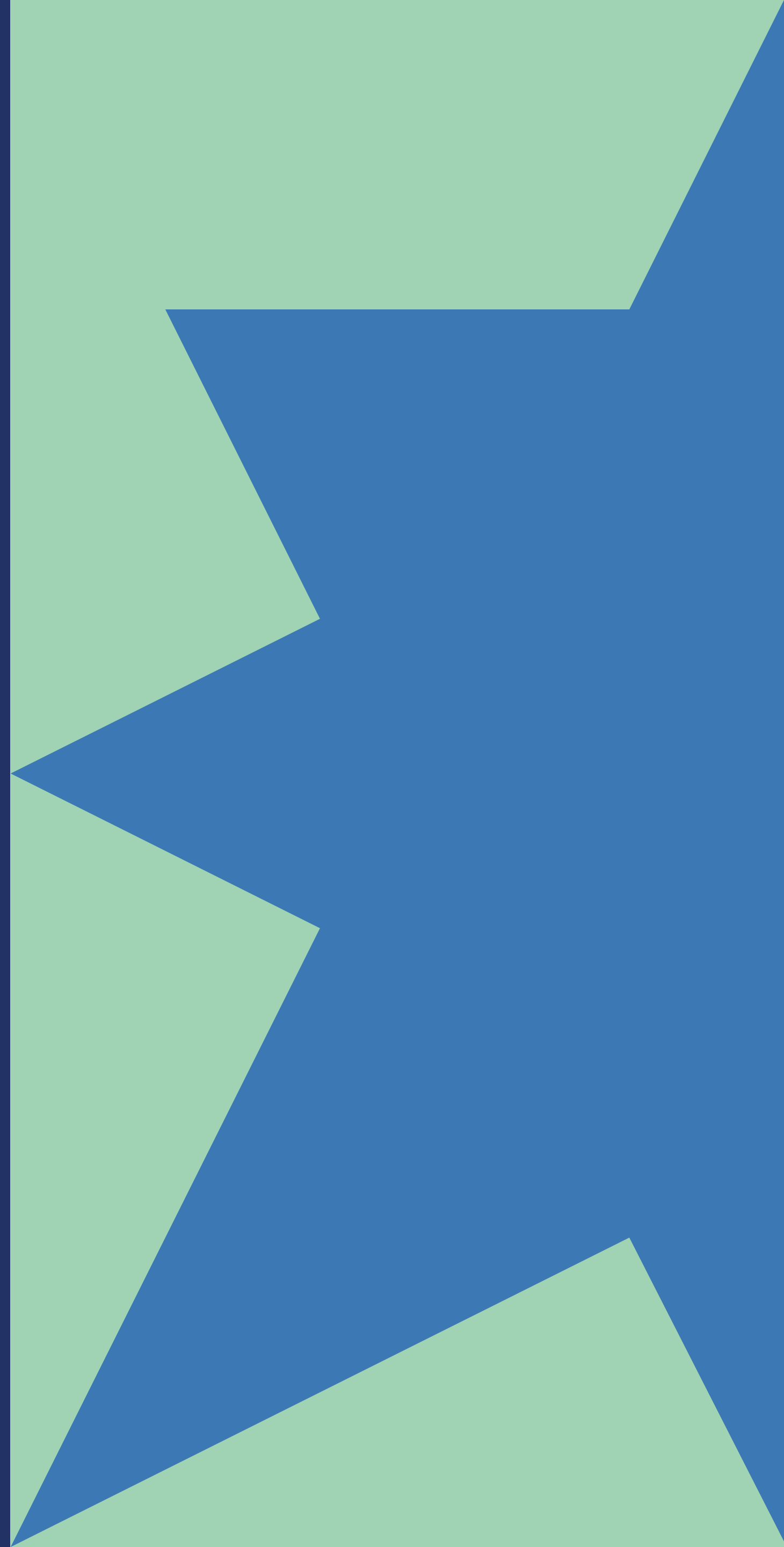




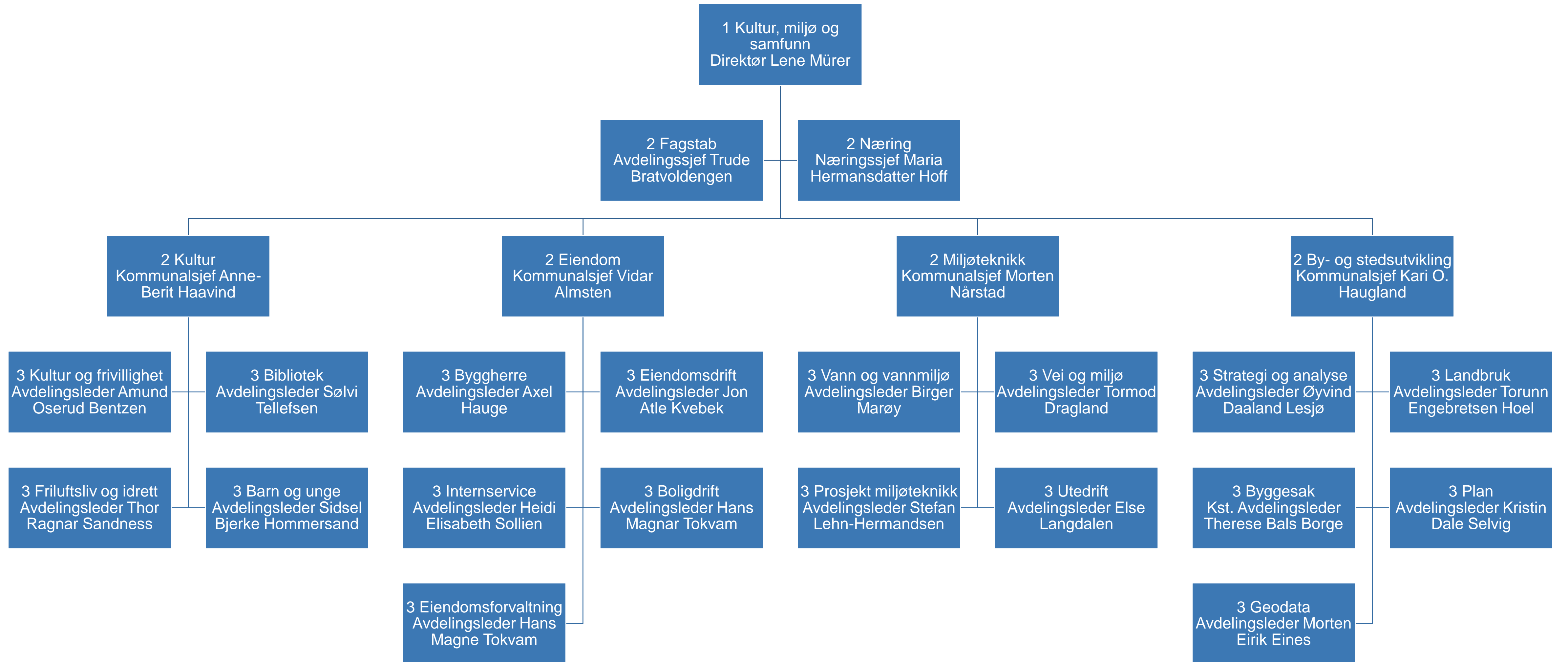


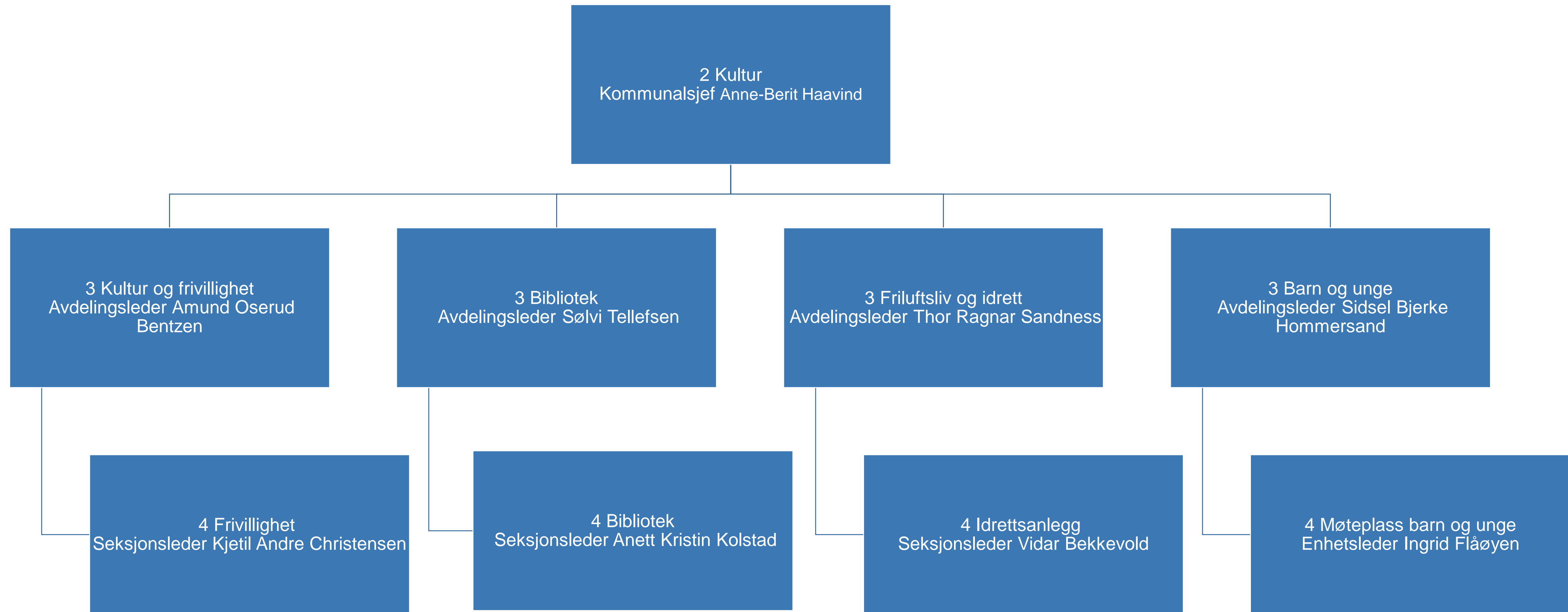
Lillestrøm  
kommune

# Kultur, miljø og samfunn



# Lillestrøm kommune





Lillestrøm  
kommune

