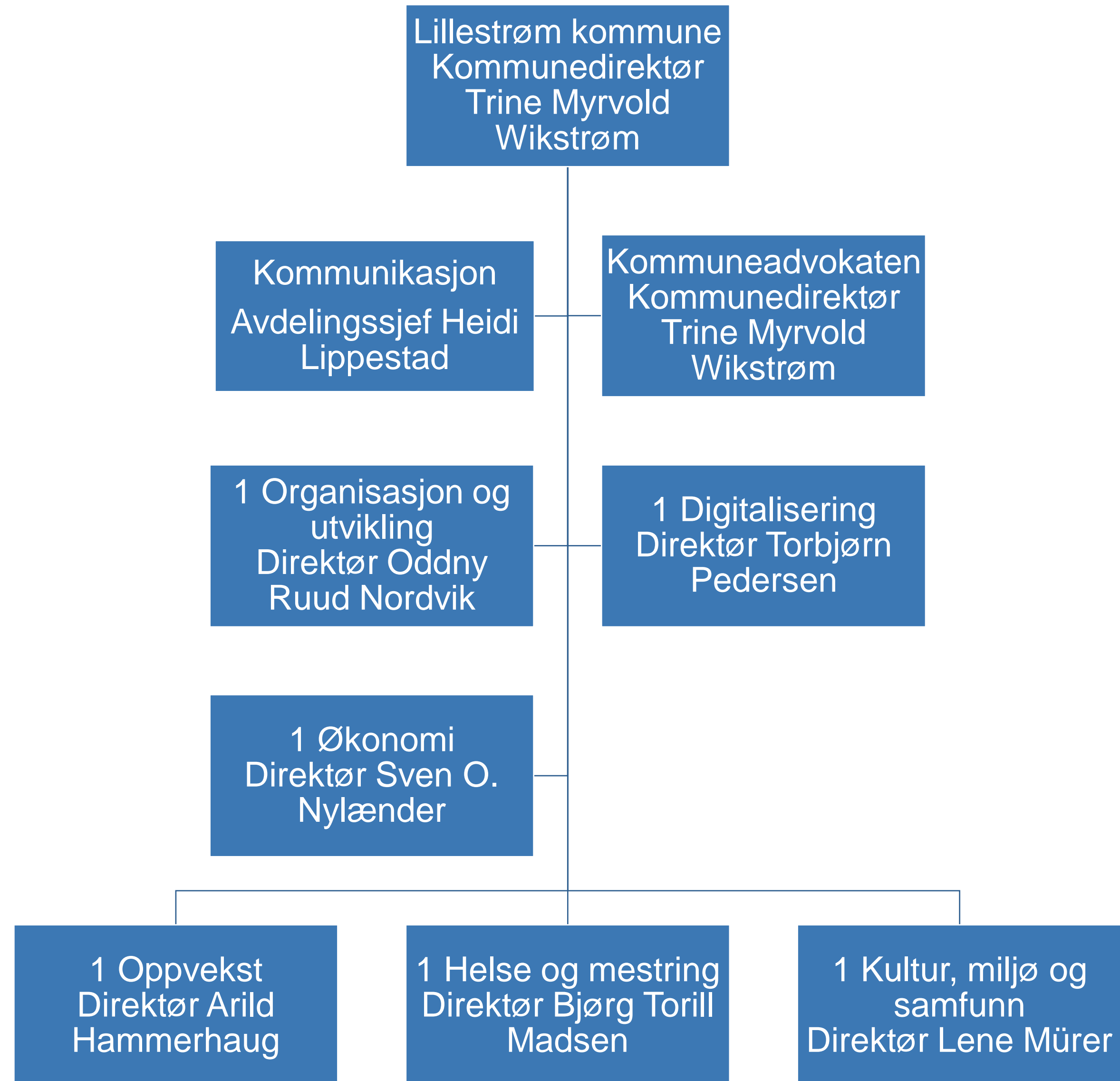


Lillestrøm
kommune

Lillestrøm kommune

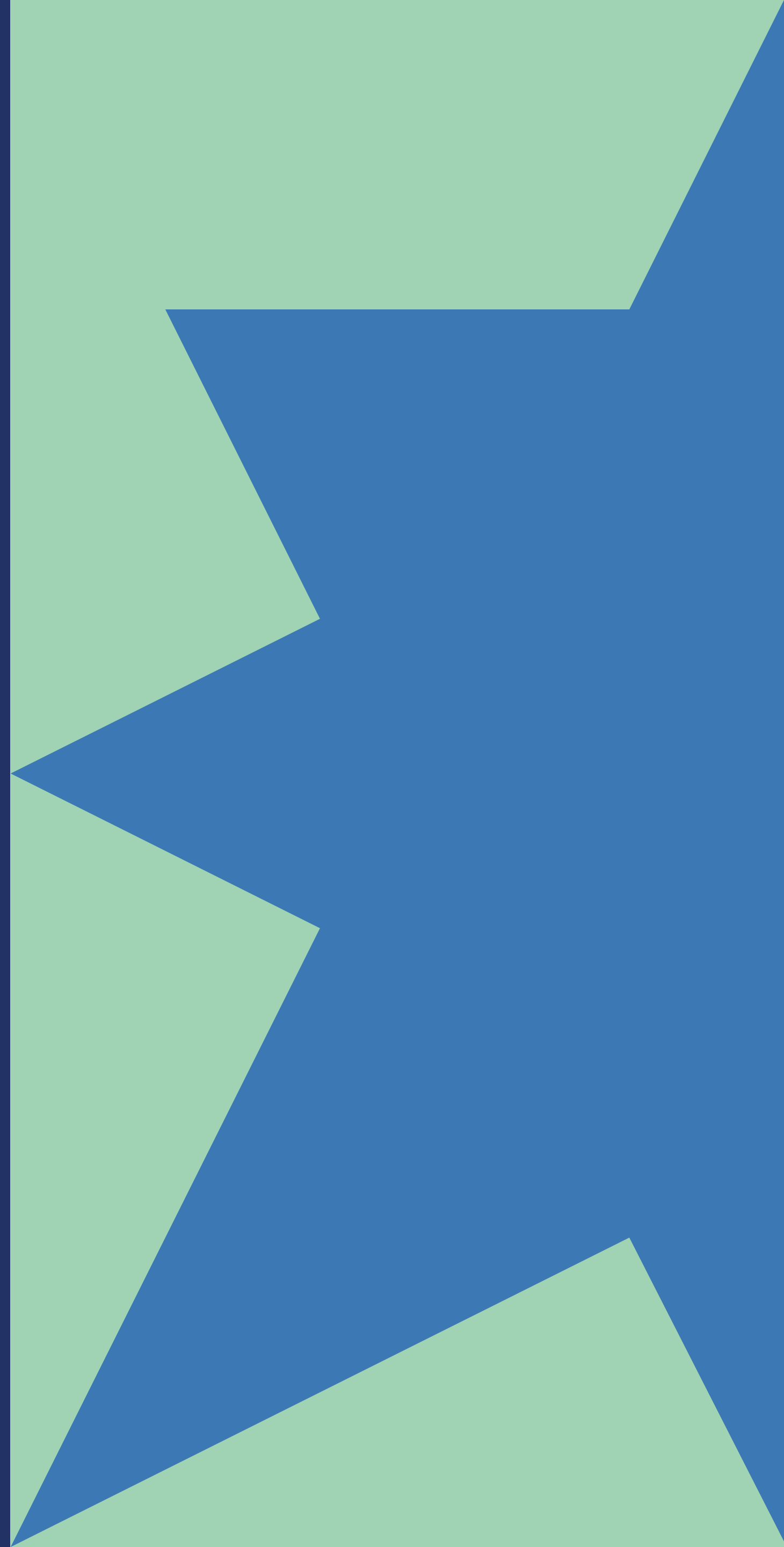
Organisasjonskart





Lillestrøm
kommune

Stabsavdelingene



1 Økonomi
Direktør Sven O.
Nylænder

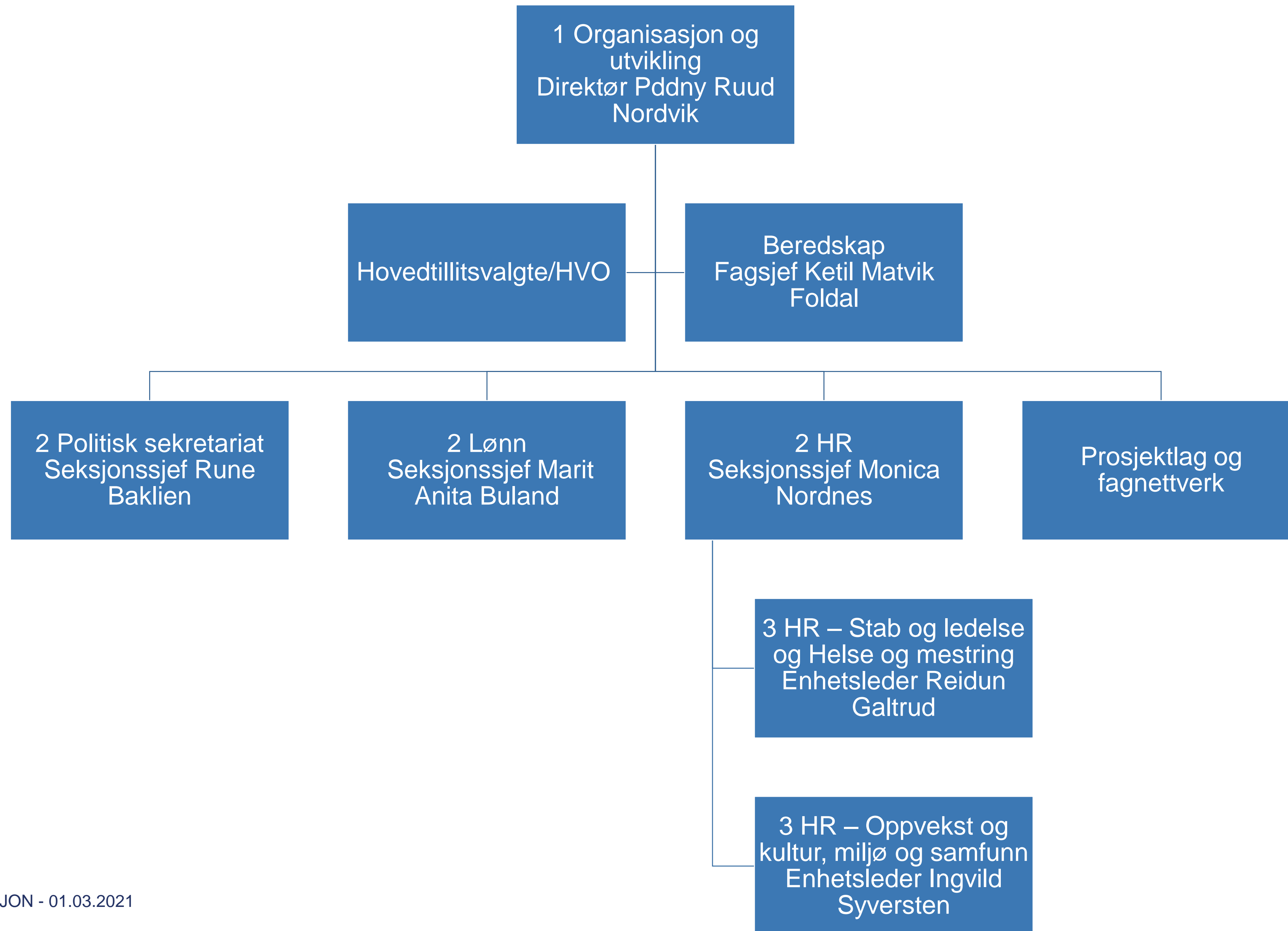
2 Fagstab

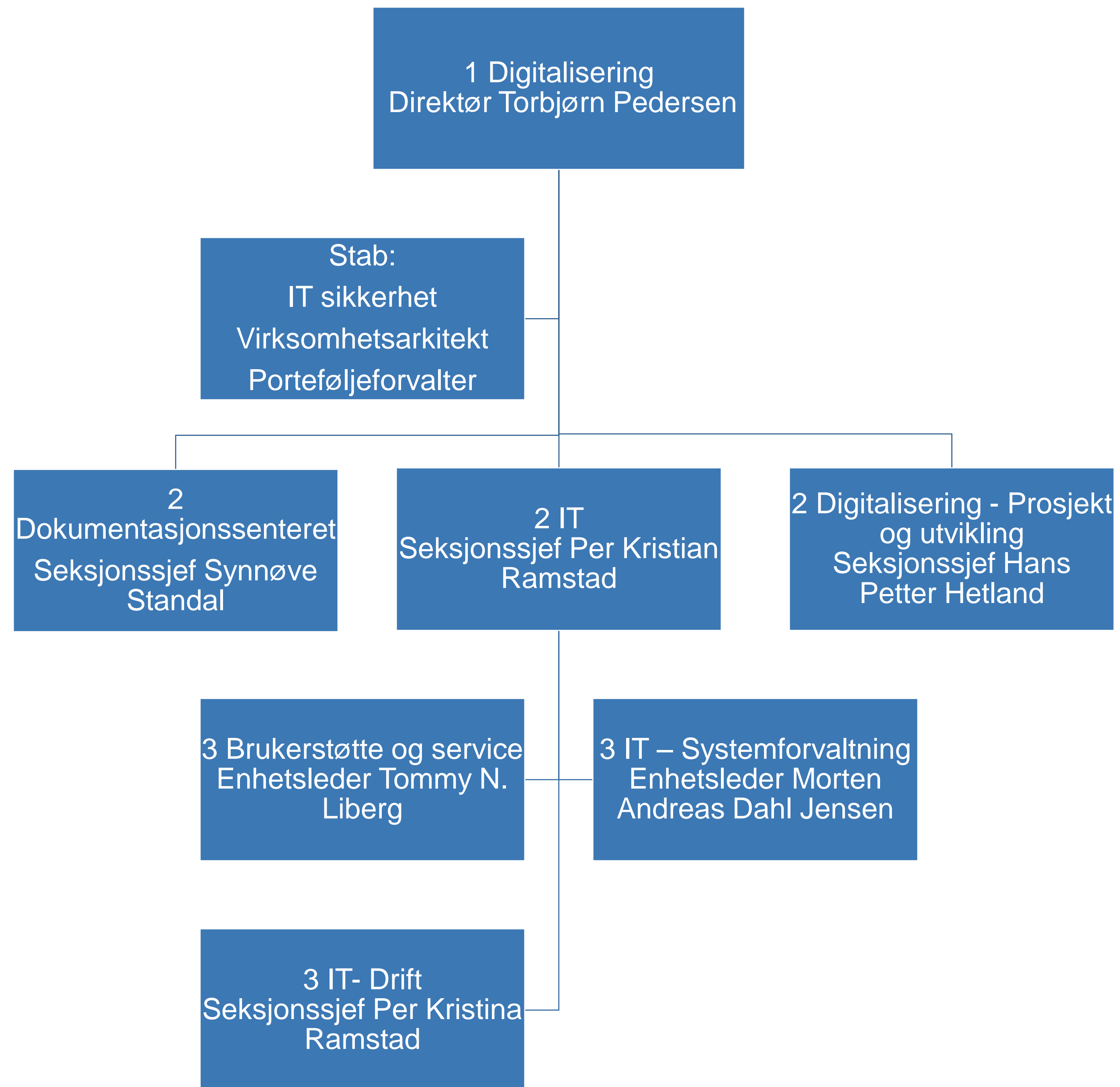
2 Innkjøp
Seksjonssjef Carl
Henriksen

VERSJON - 01.03.2021

2 Regnskap
Seksjonssjef Mona
Berntsen

2 Økonomi og
virksomhetsstyring
Seksjonssjef
Anders Taxt

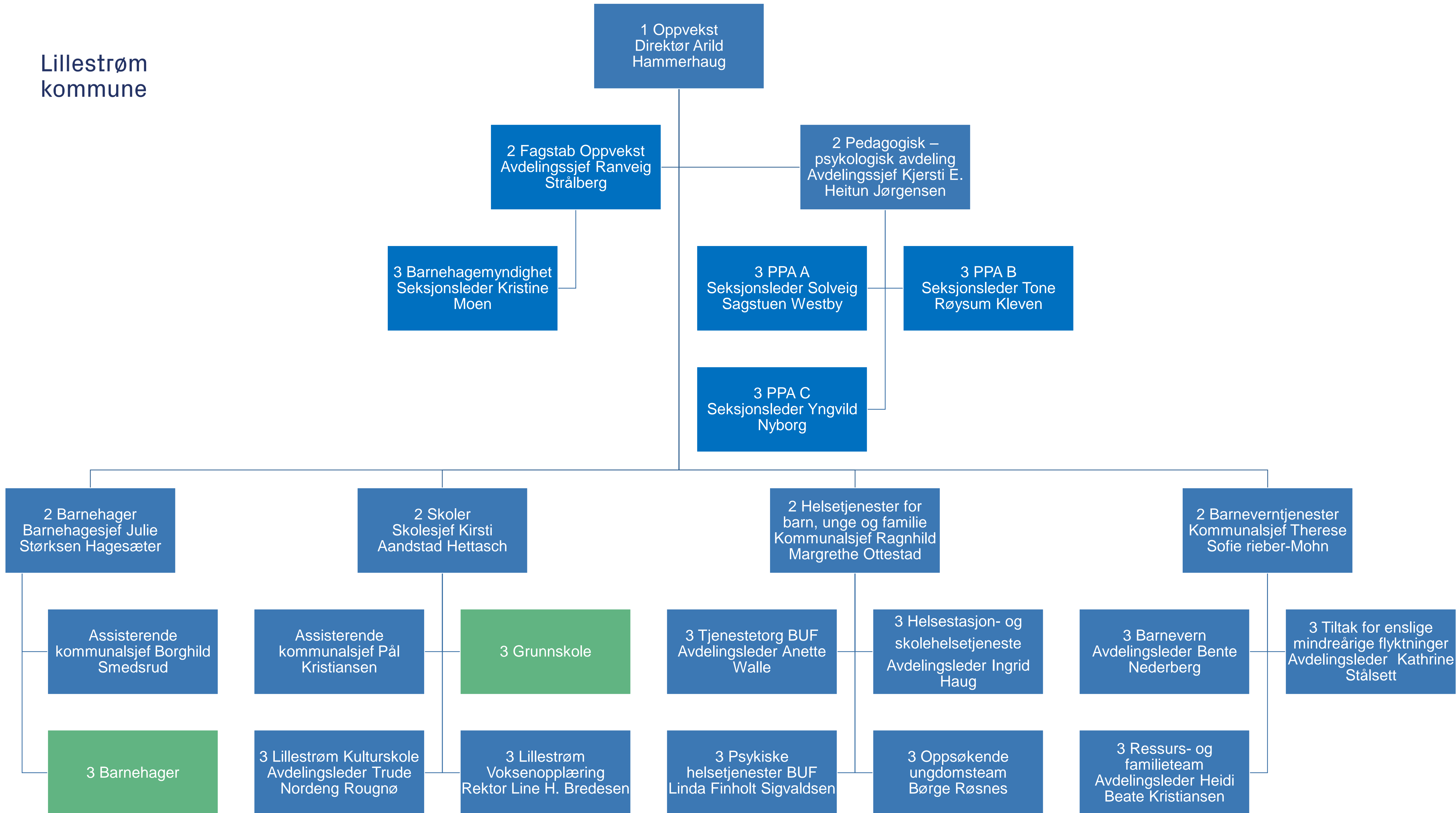


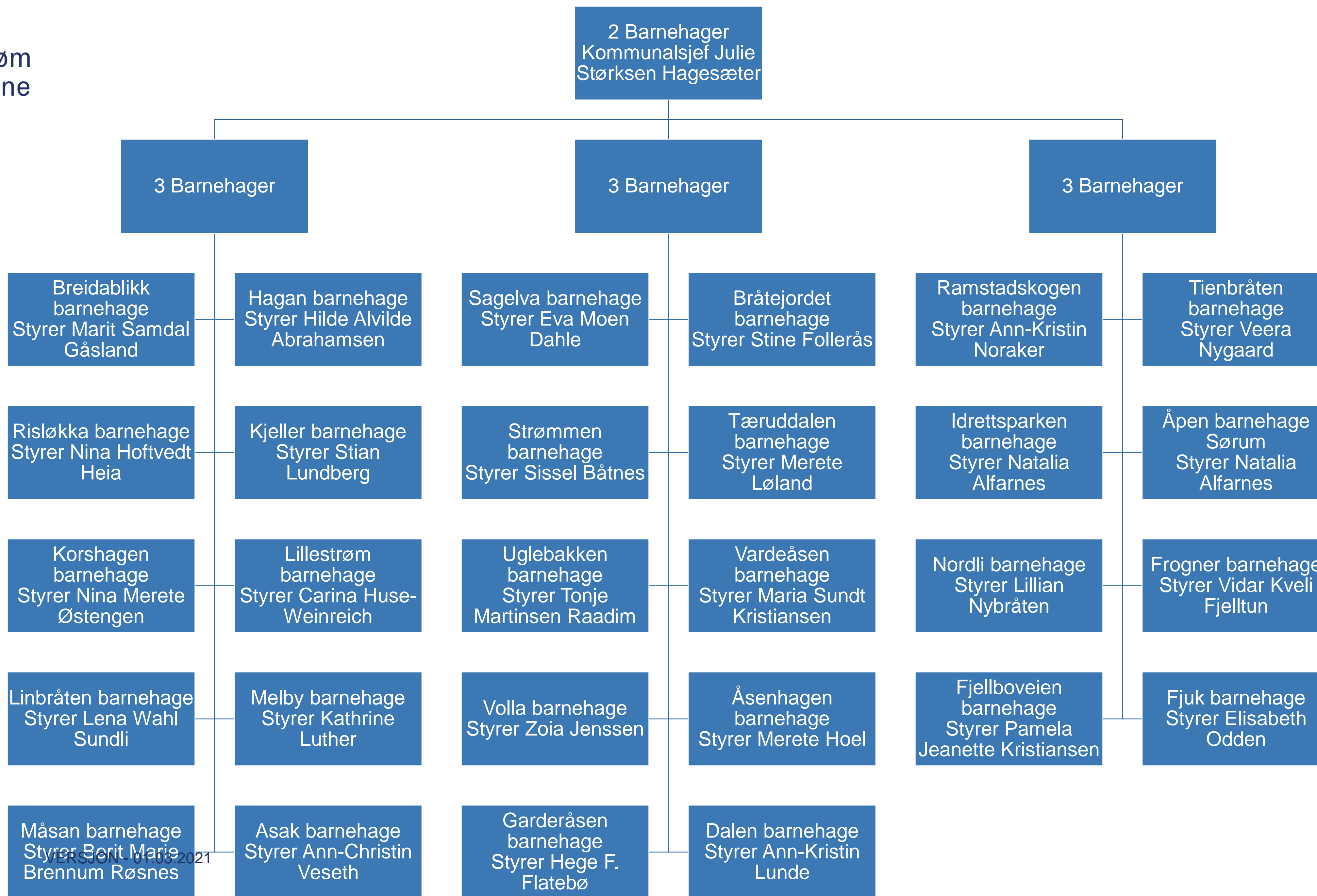


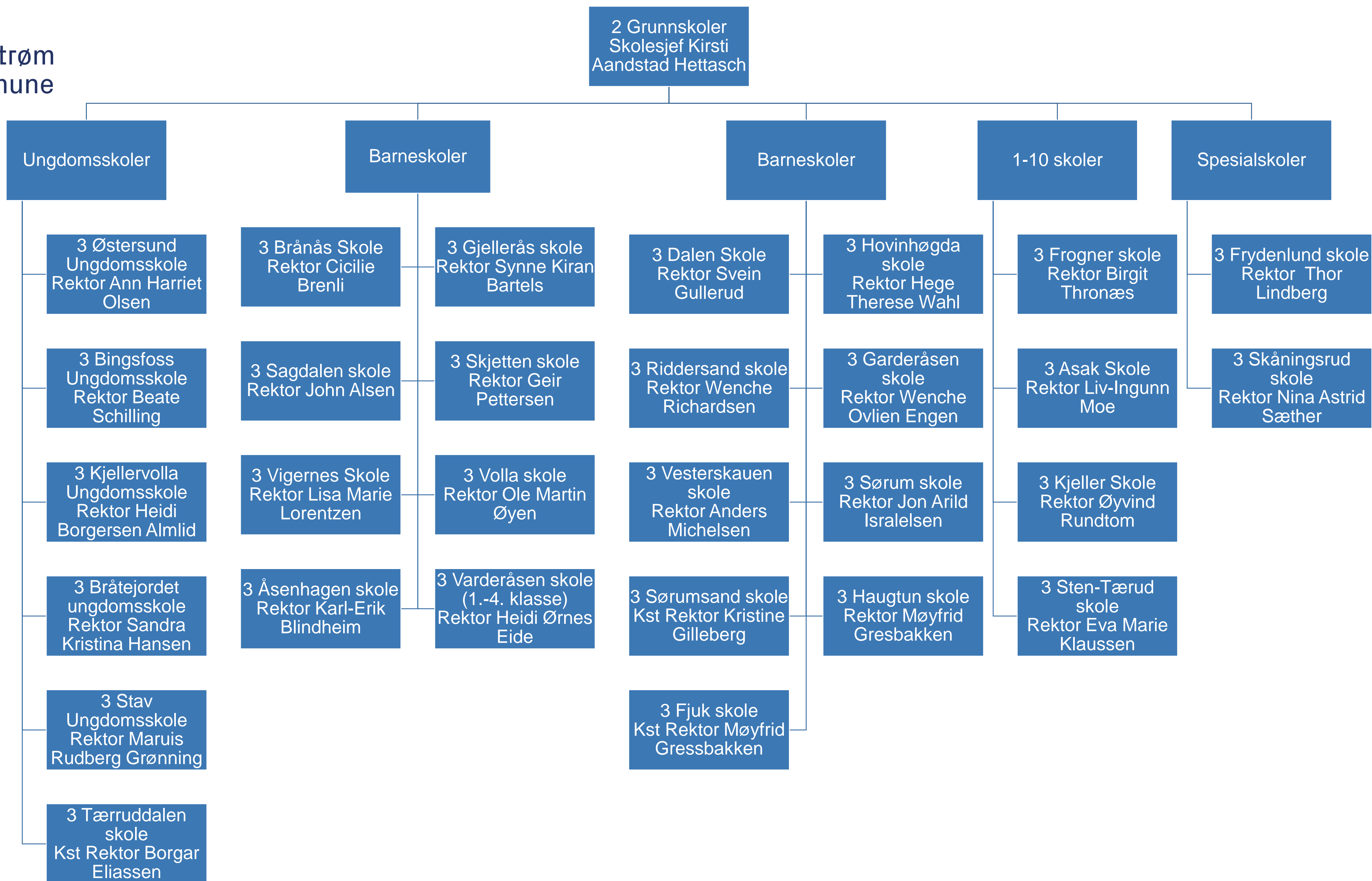
Lillestrøm
kommune

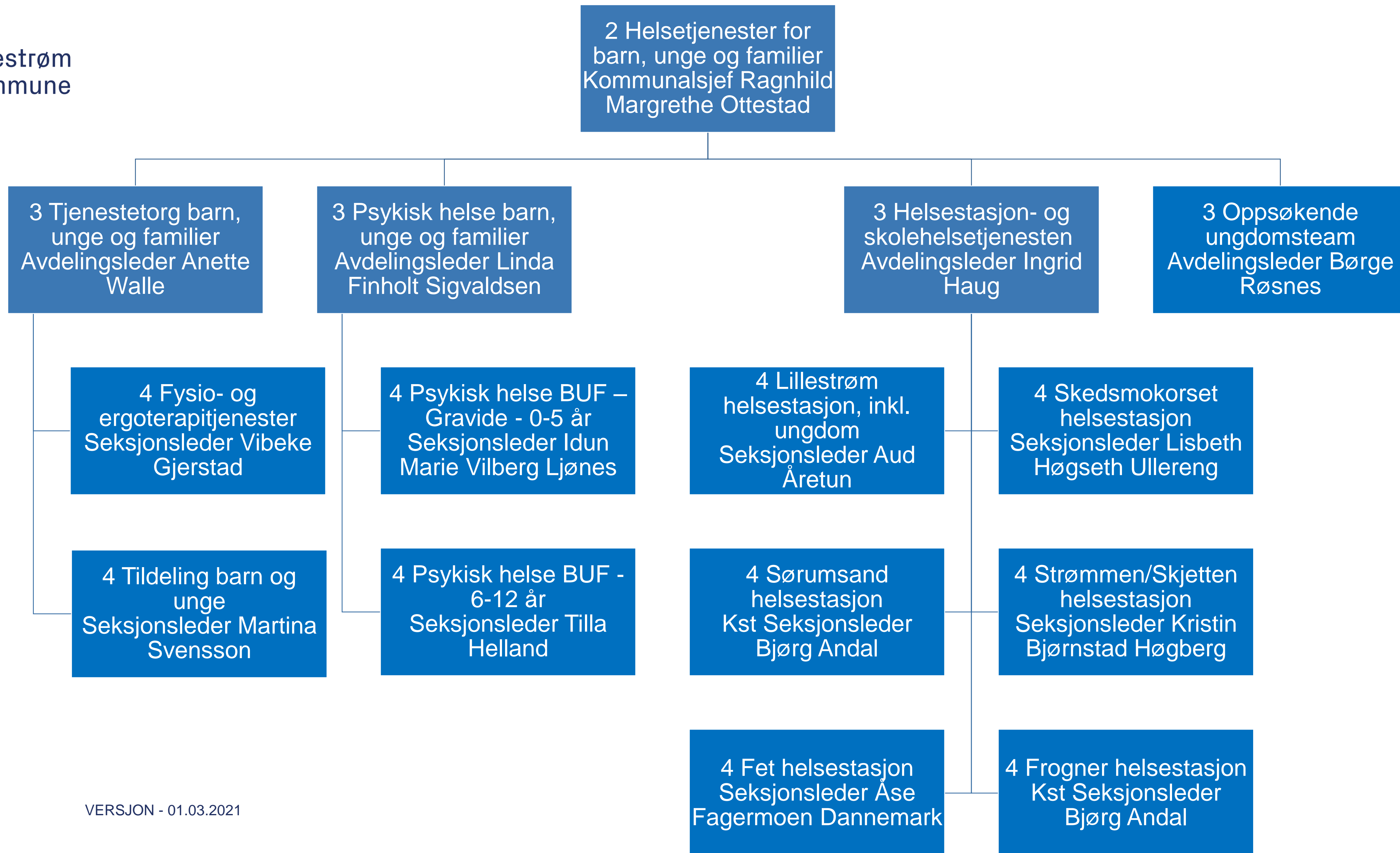
Oppvekst

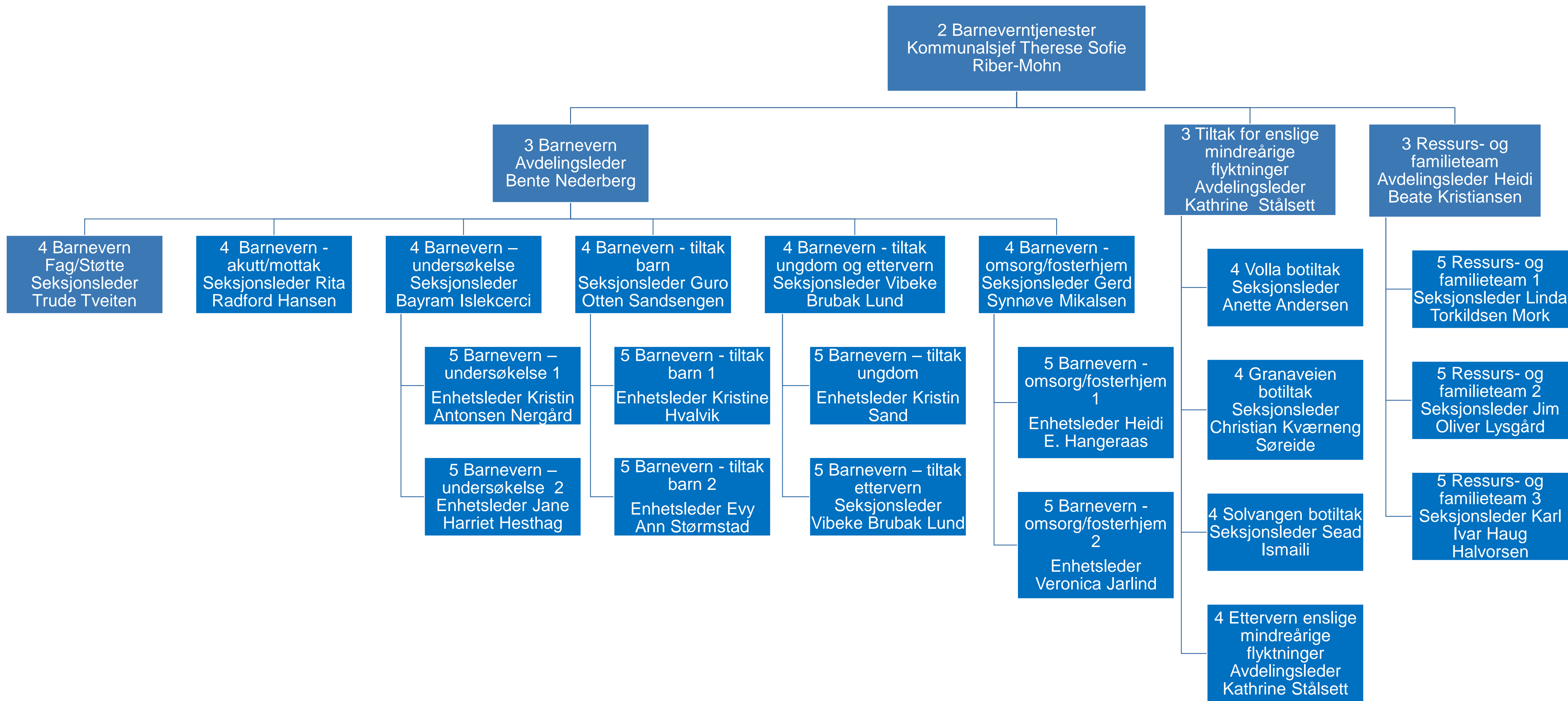








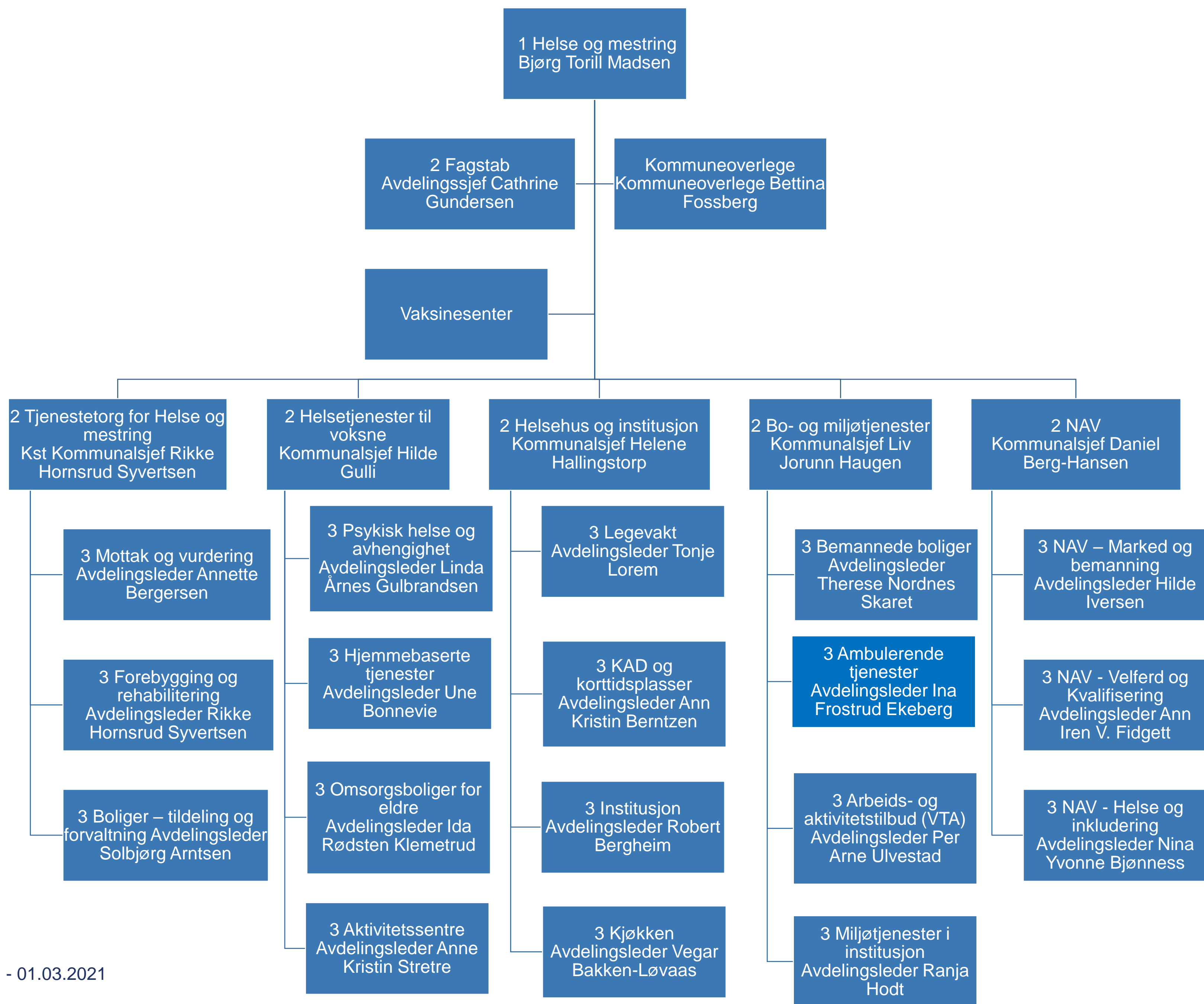


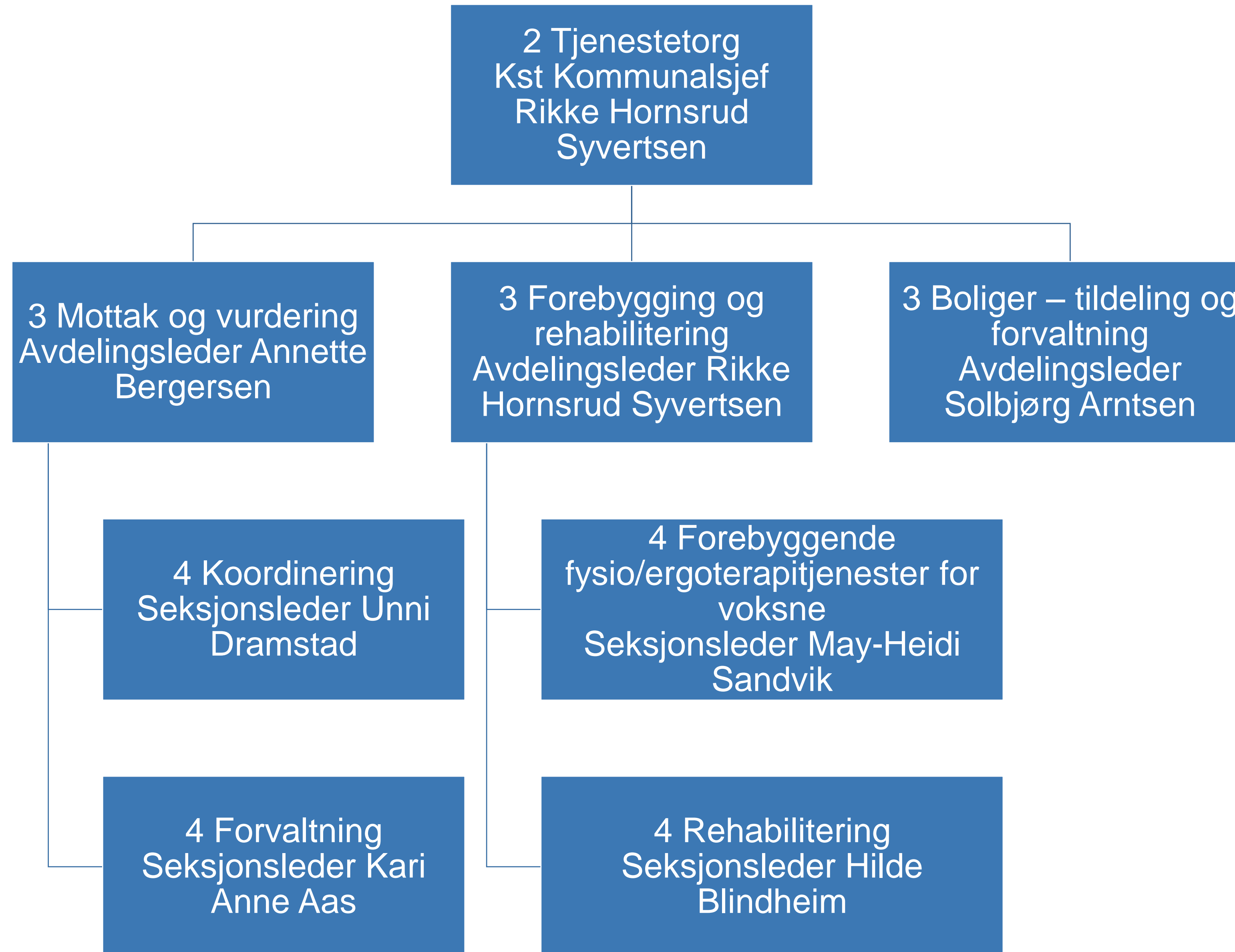


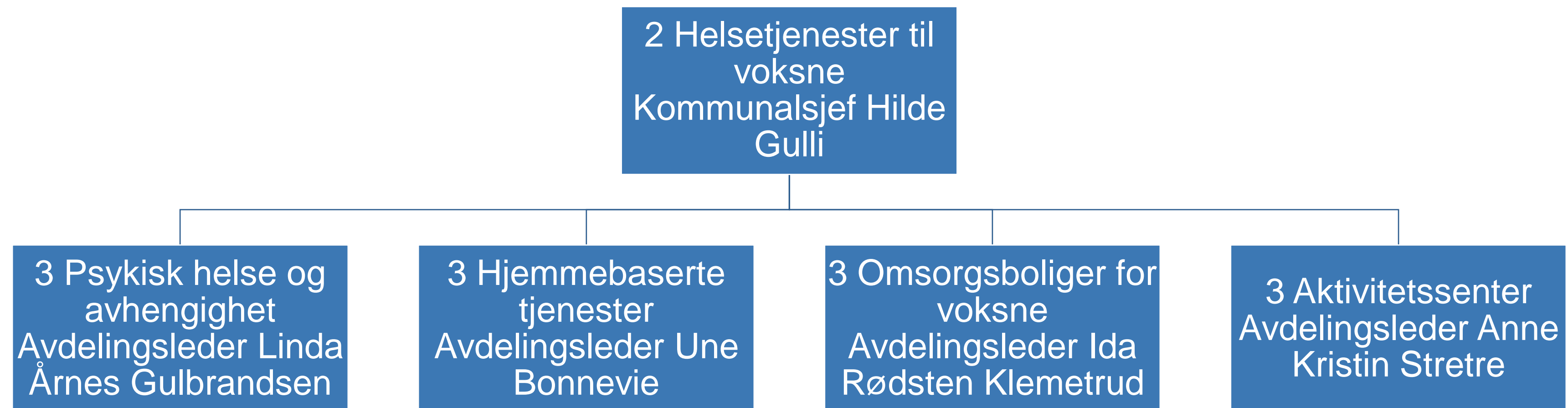
Lillestrøm
kommune

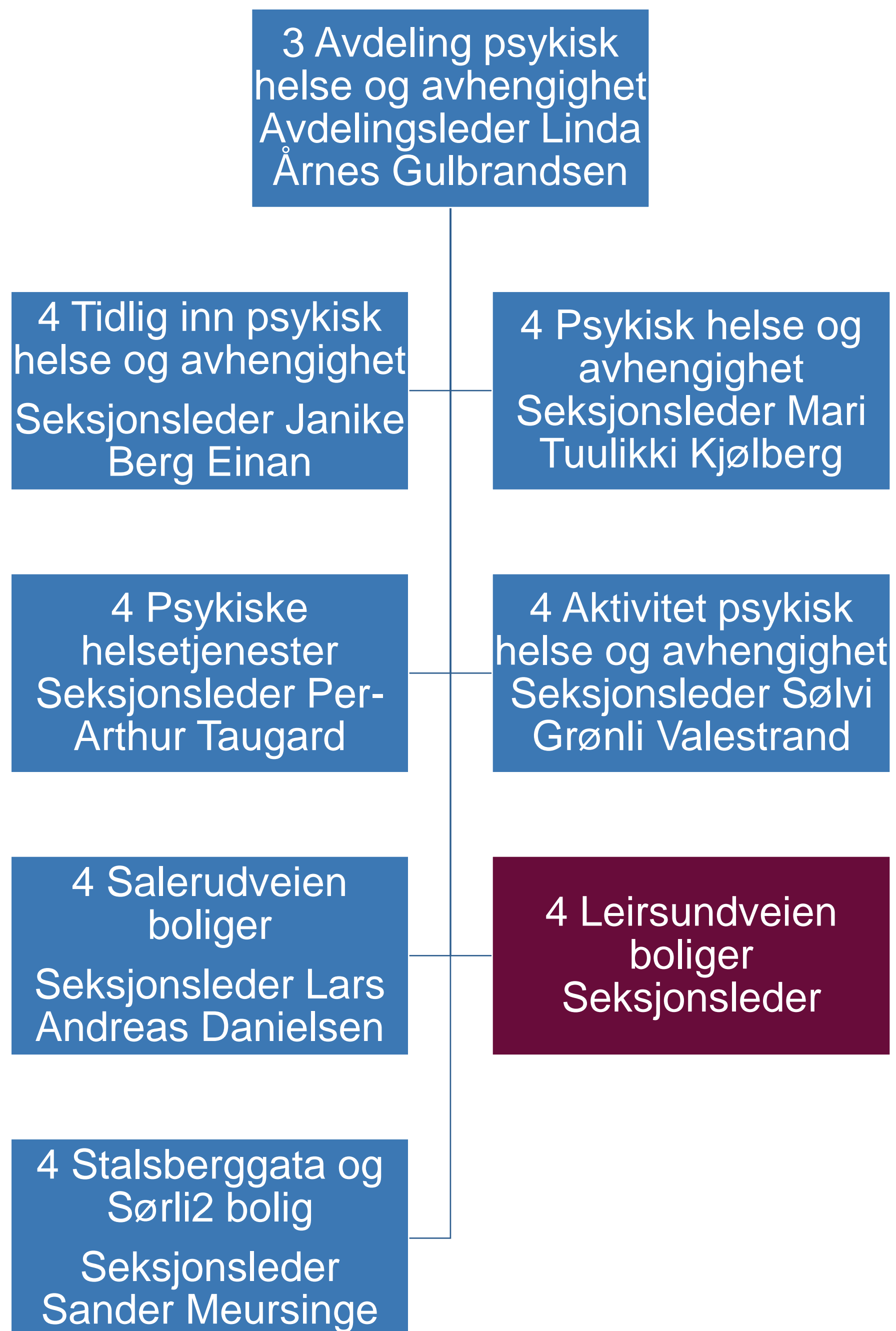
Helse og mestring

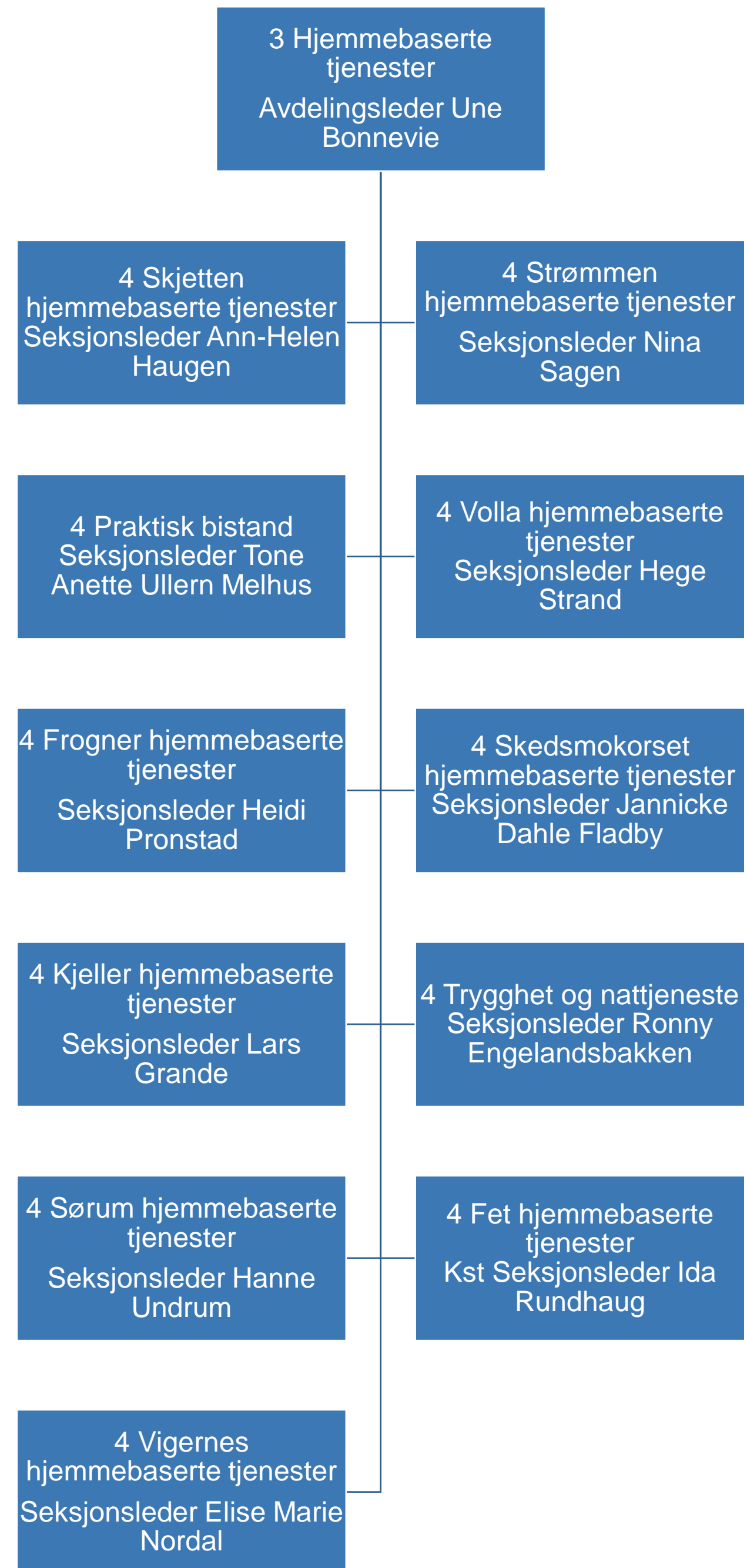


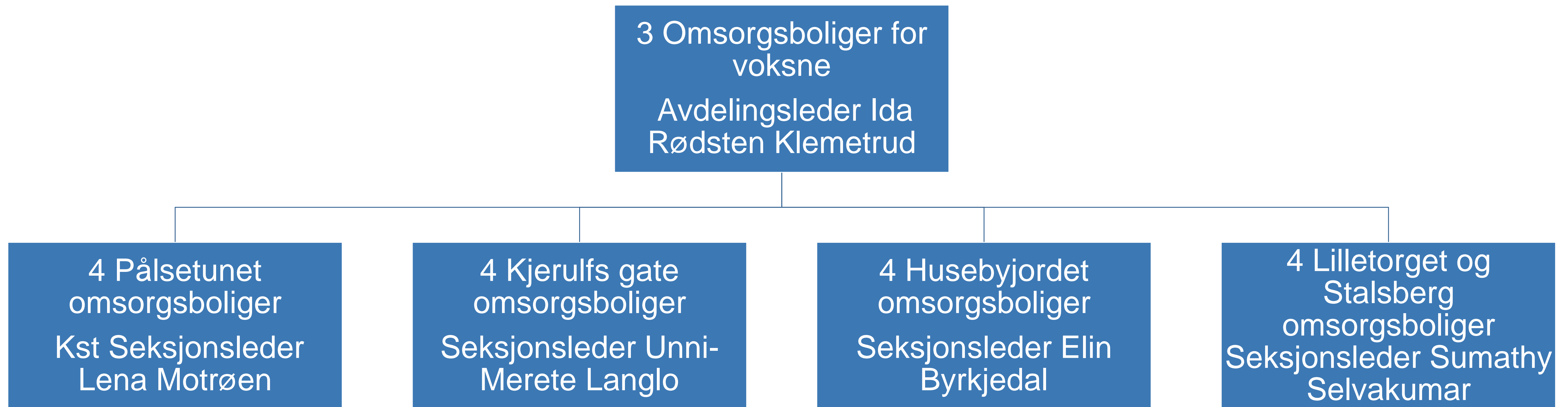


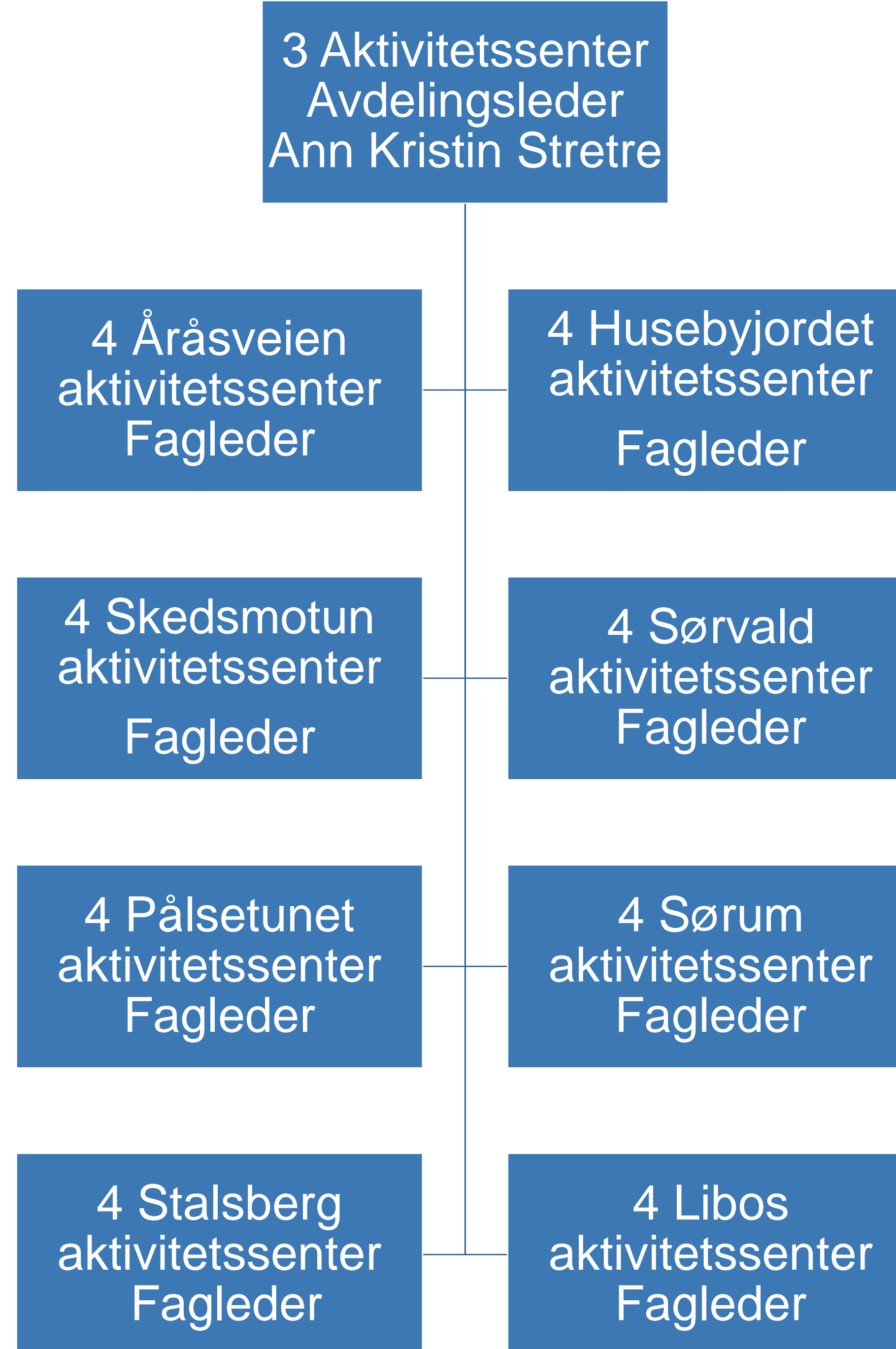


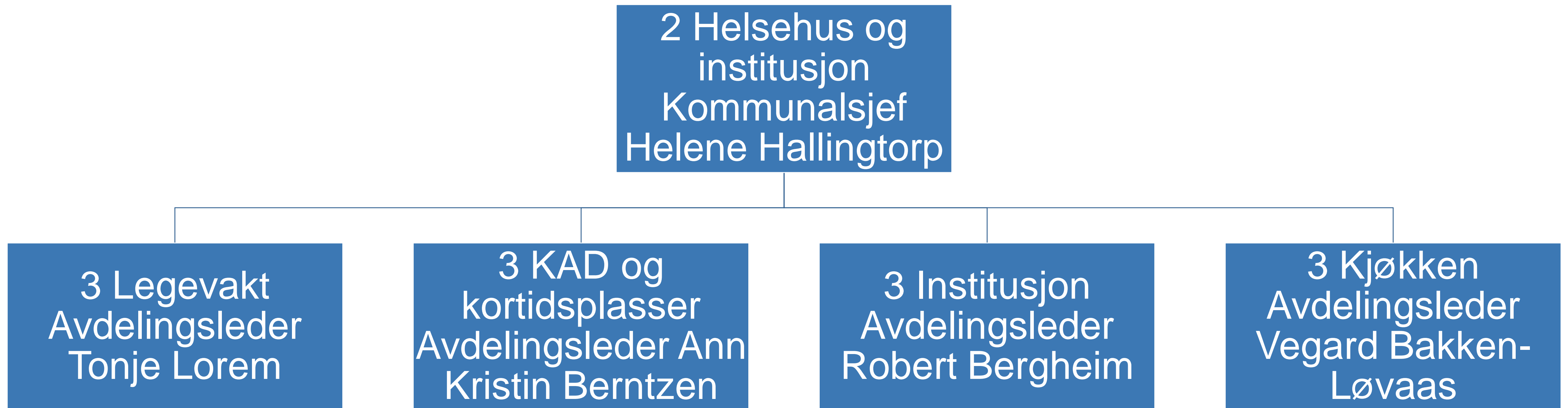


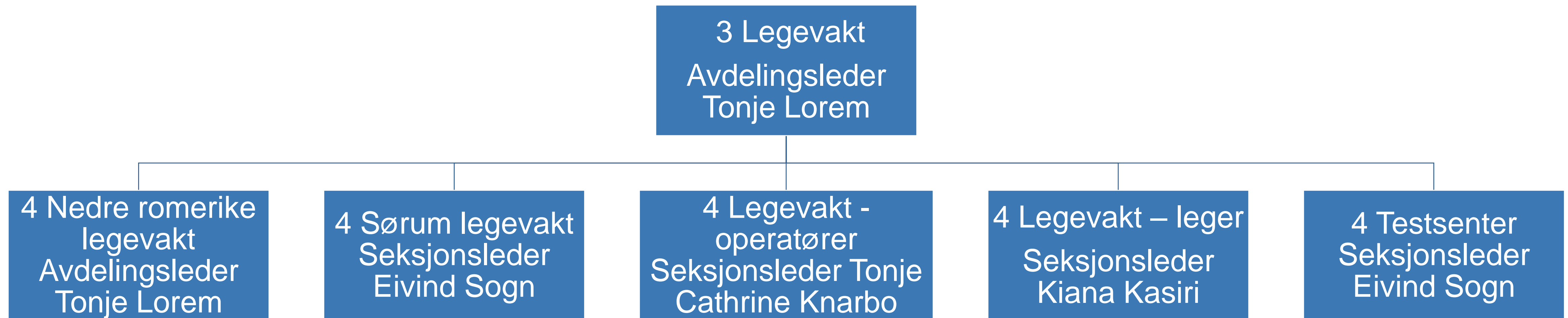


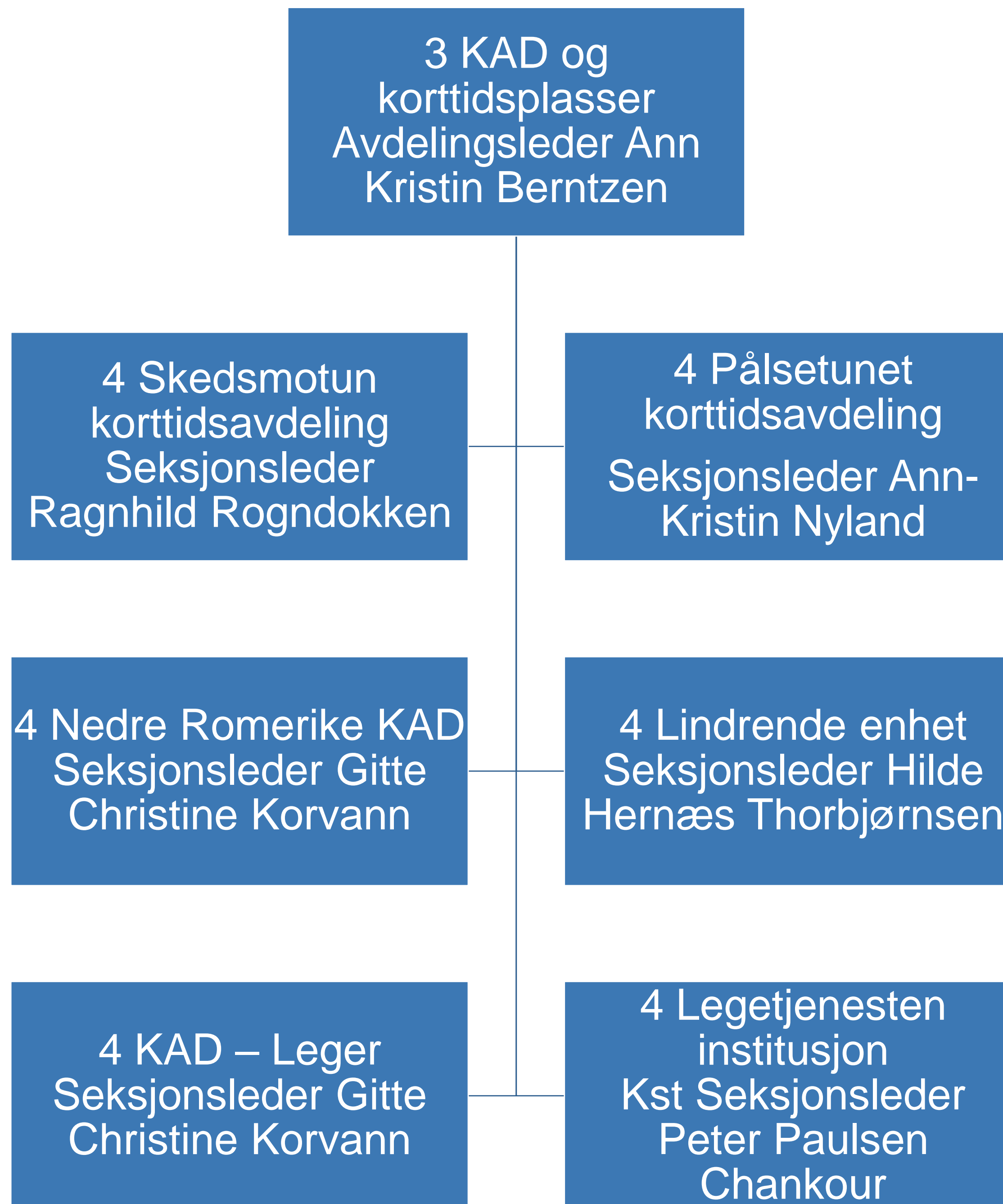


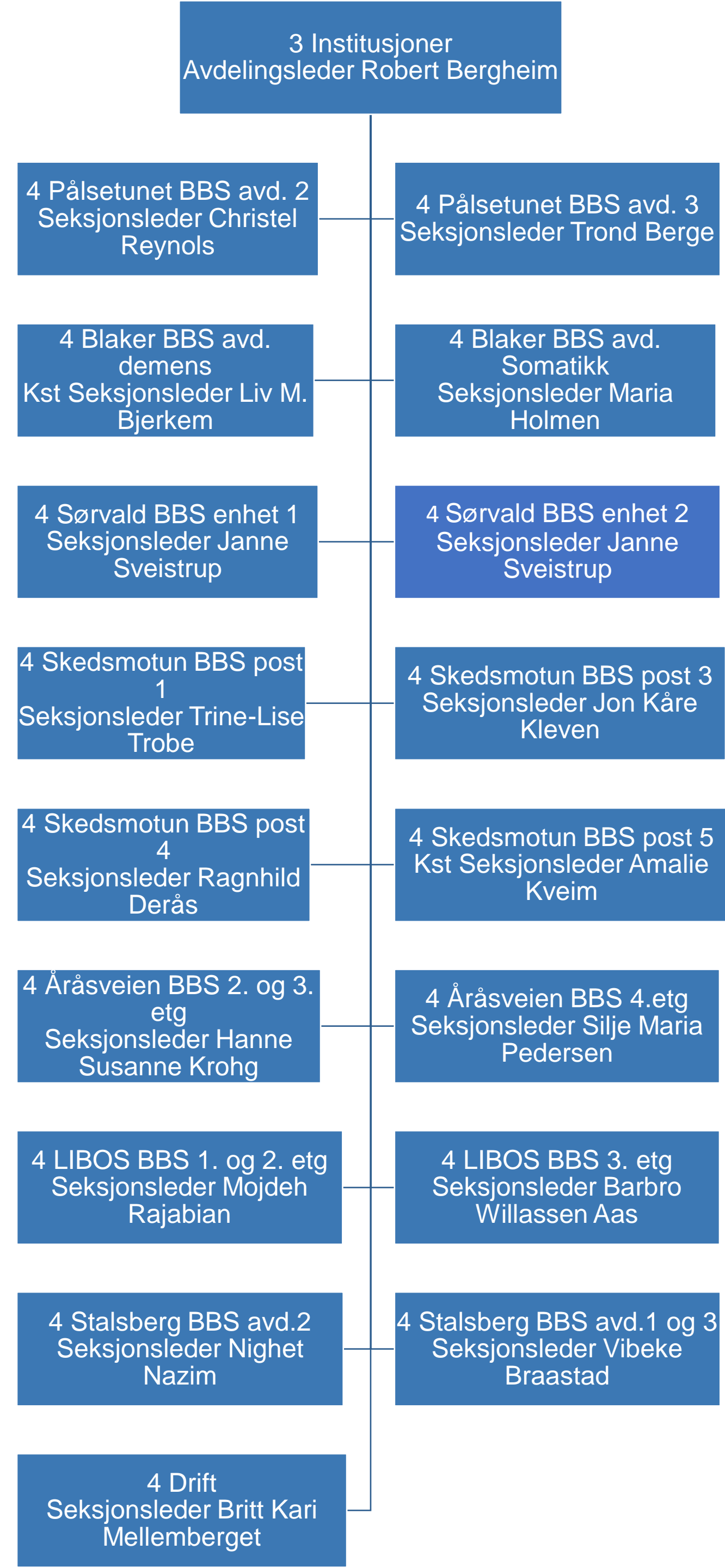


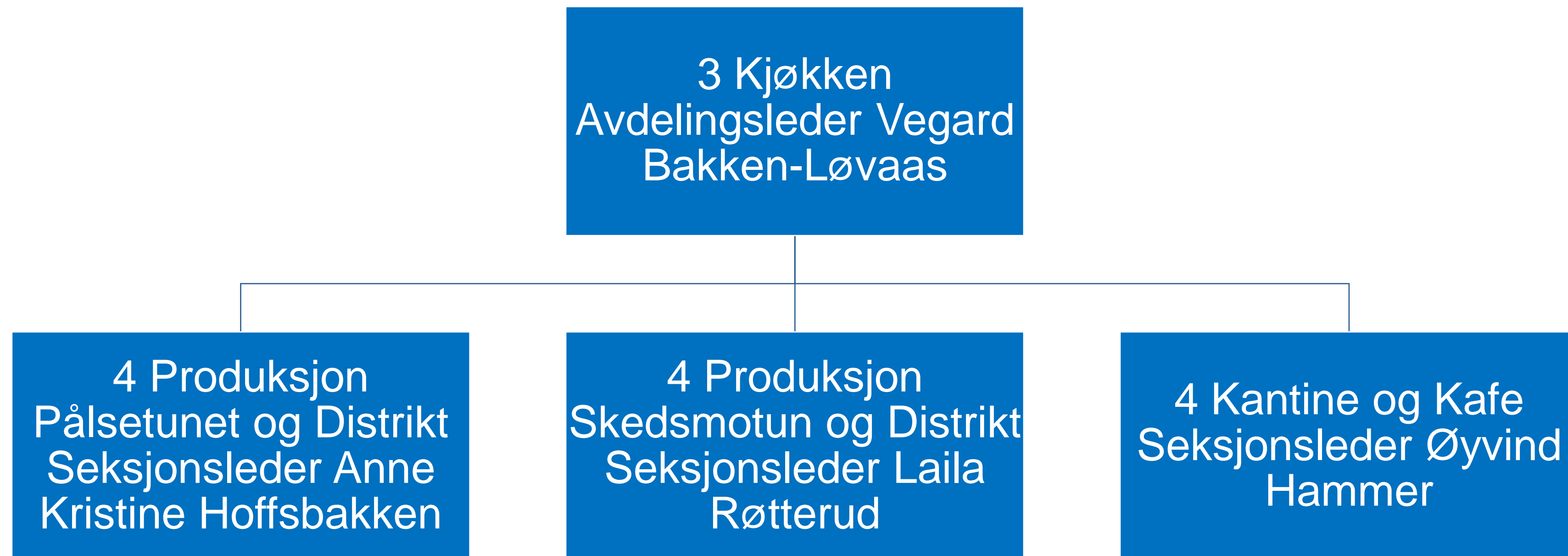


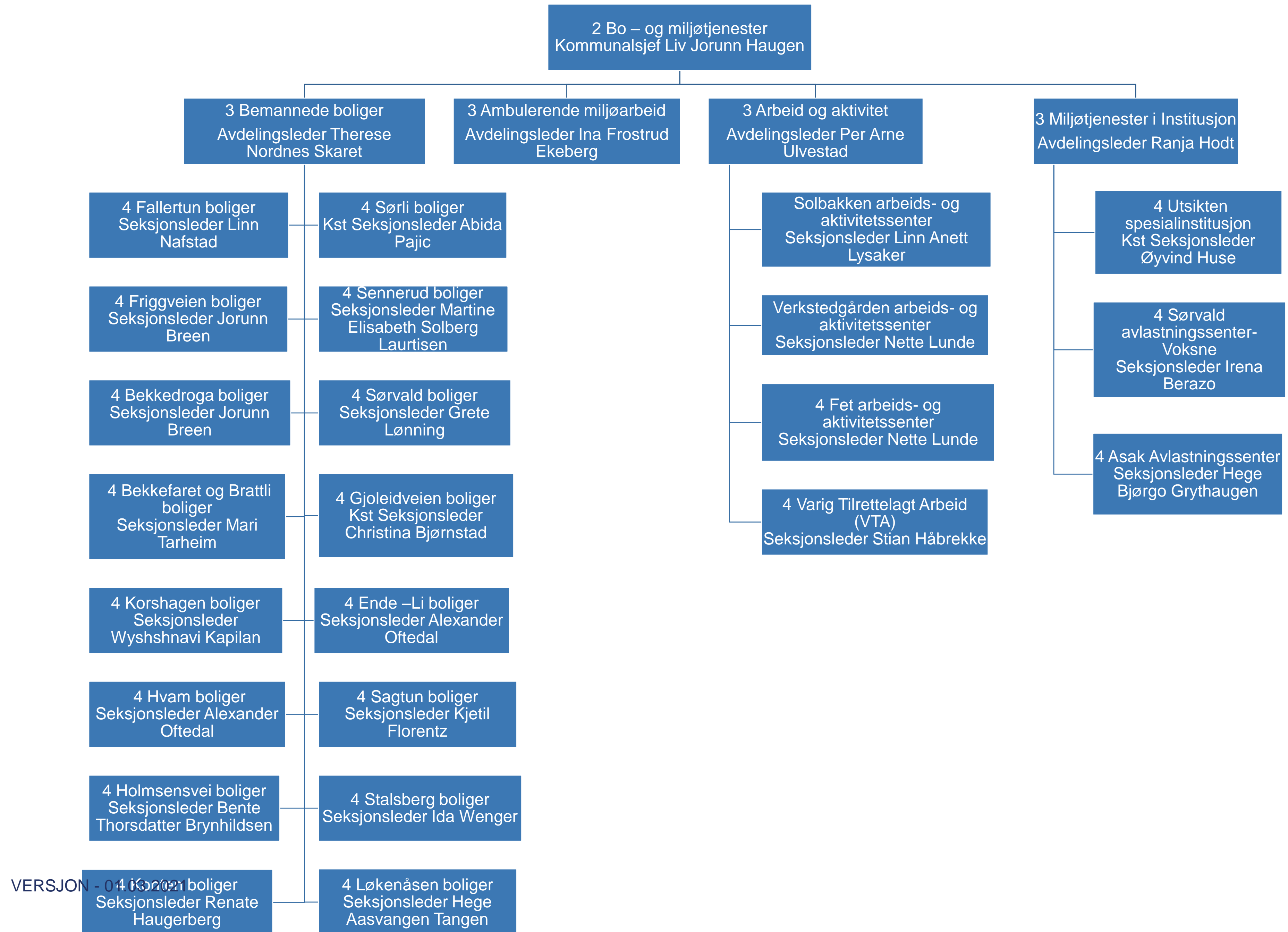












Lillestrøm
kommune

Kultur, miljø og samfunn

