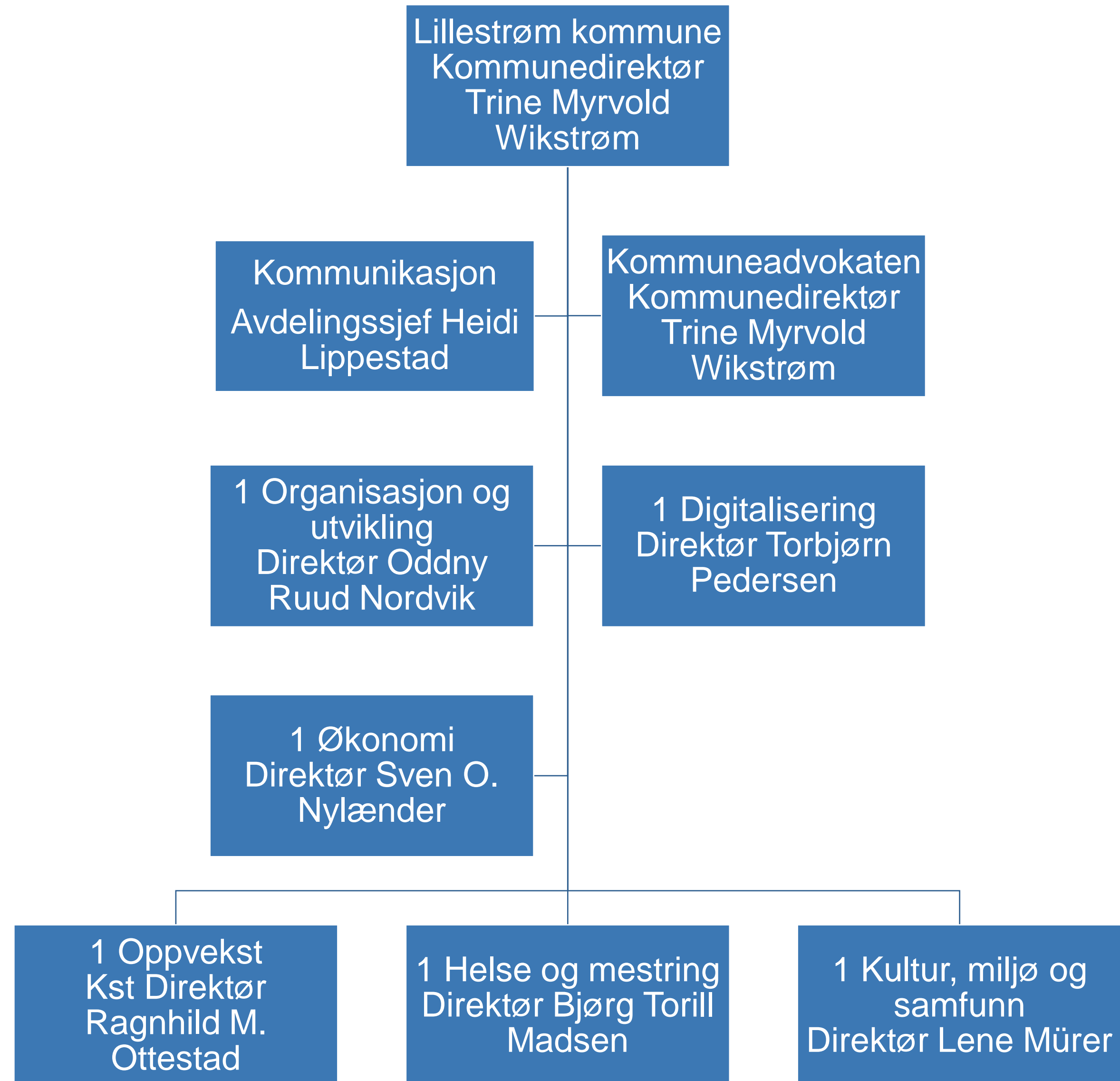


Lillestrøm
kommune

Lillestrøm kommune Organisasjonskart





Lillestrøm
kommune

Stabsavdelingene



1 Økonomi
Direktør Sven O.
Nylænder

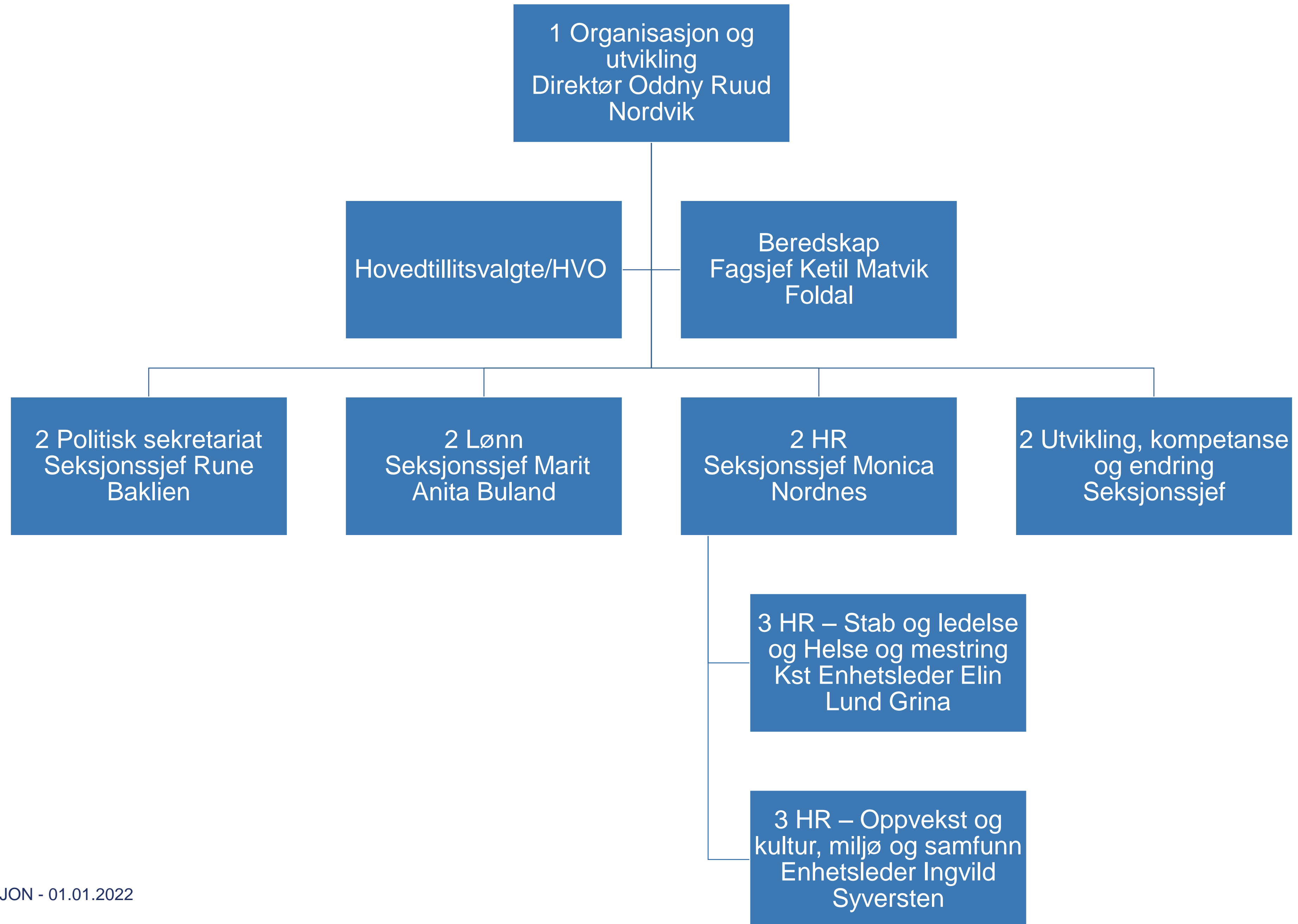
2 Fagstab

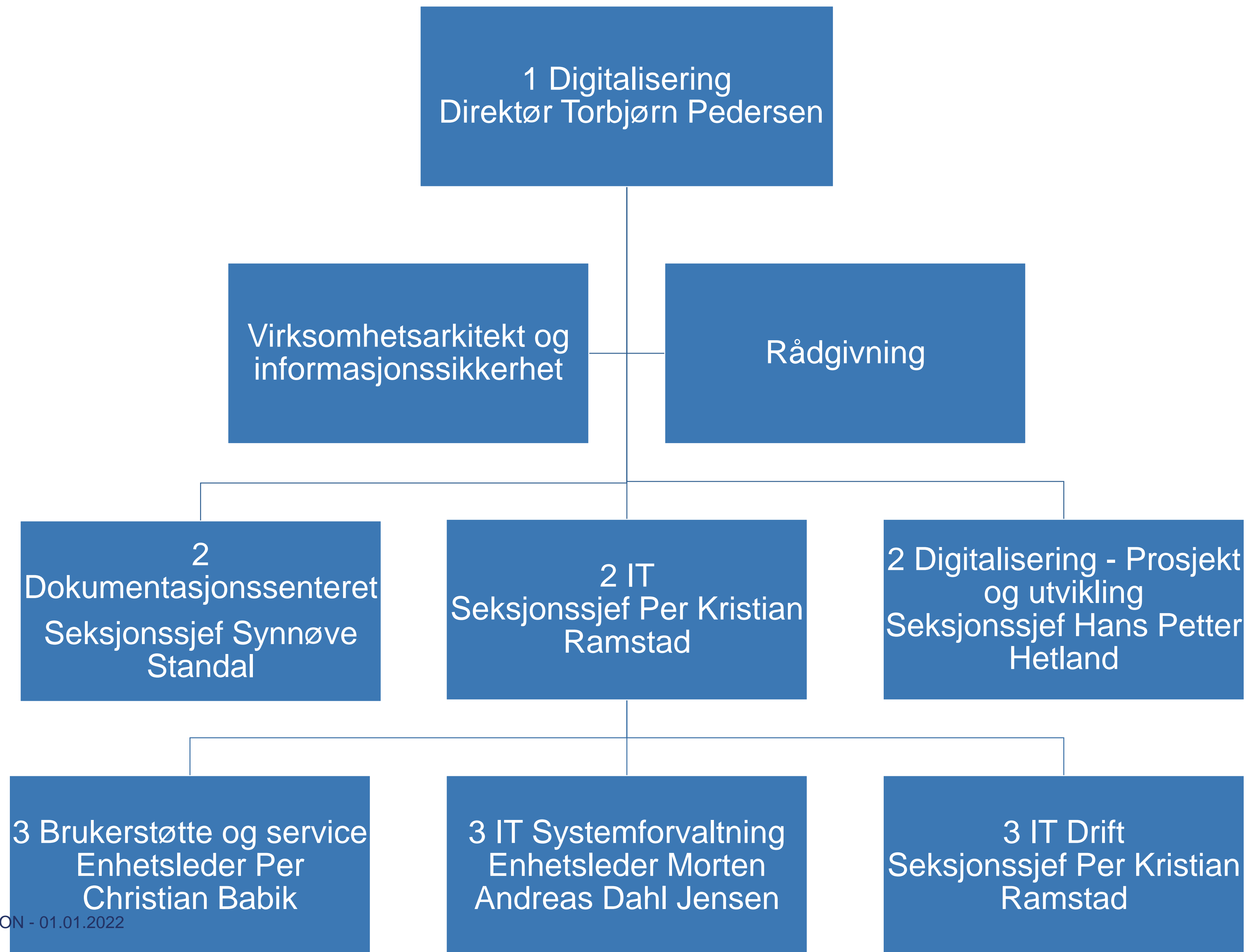
2 Innkjøp
Seksjonssjef Carl
Henriksen

VERSJON - 01.01.2022

2 Regnskap
Seksjonssjef Mona
Berntsen

2 Økonomi og
virksomhetsstyring
Seksjonssjef
Anders Taxt



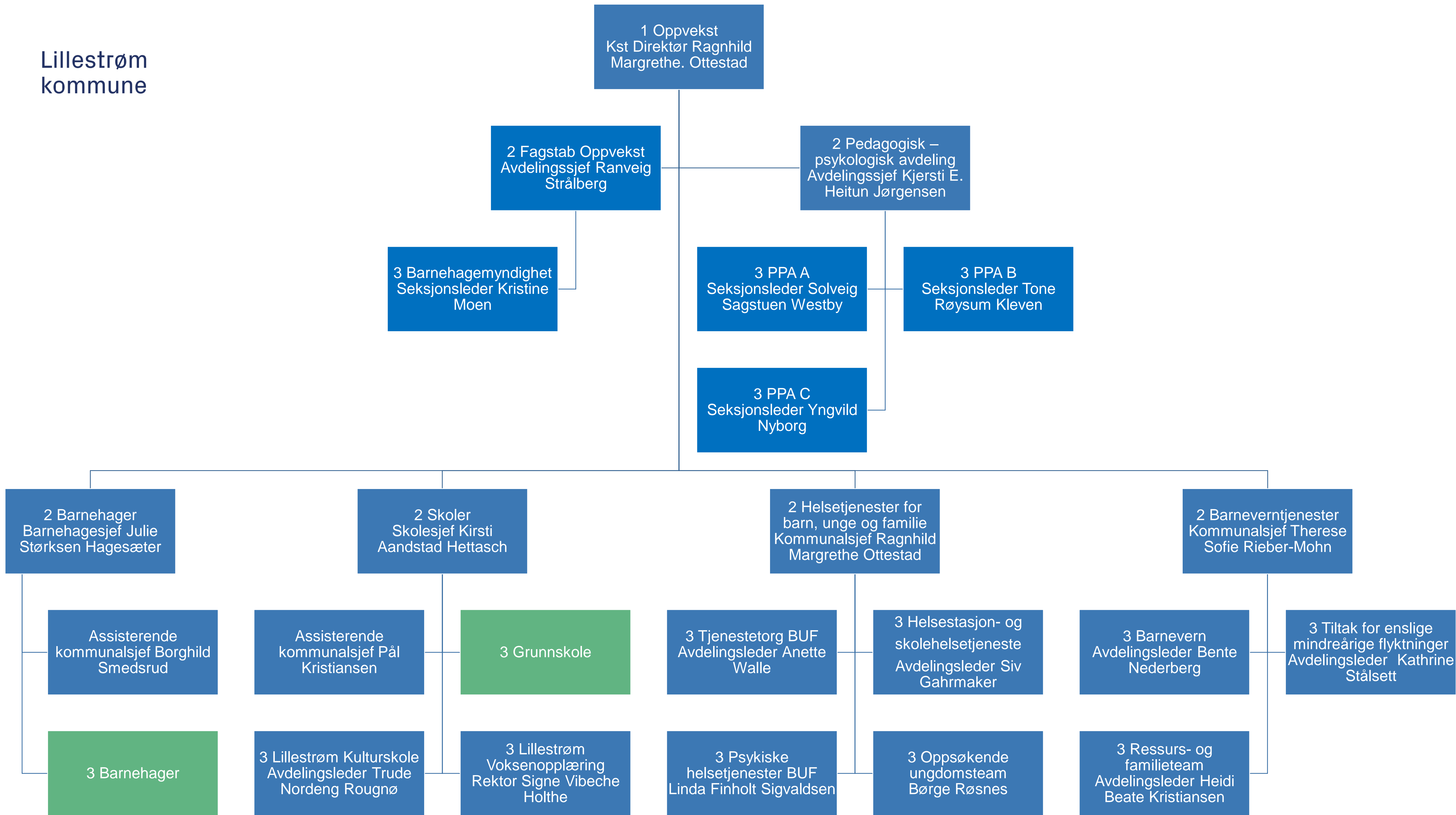


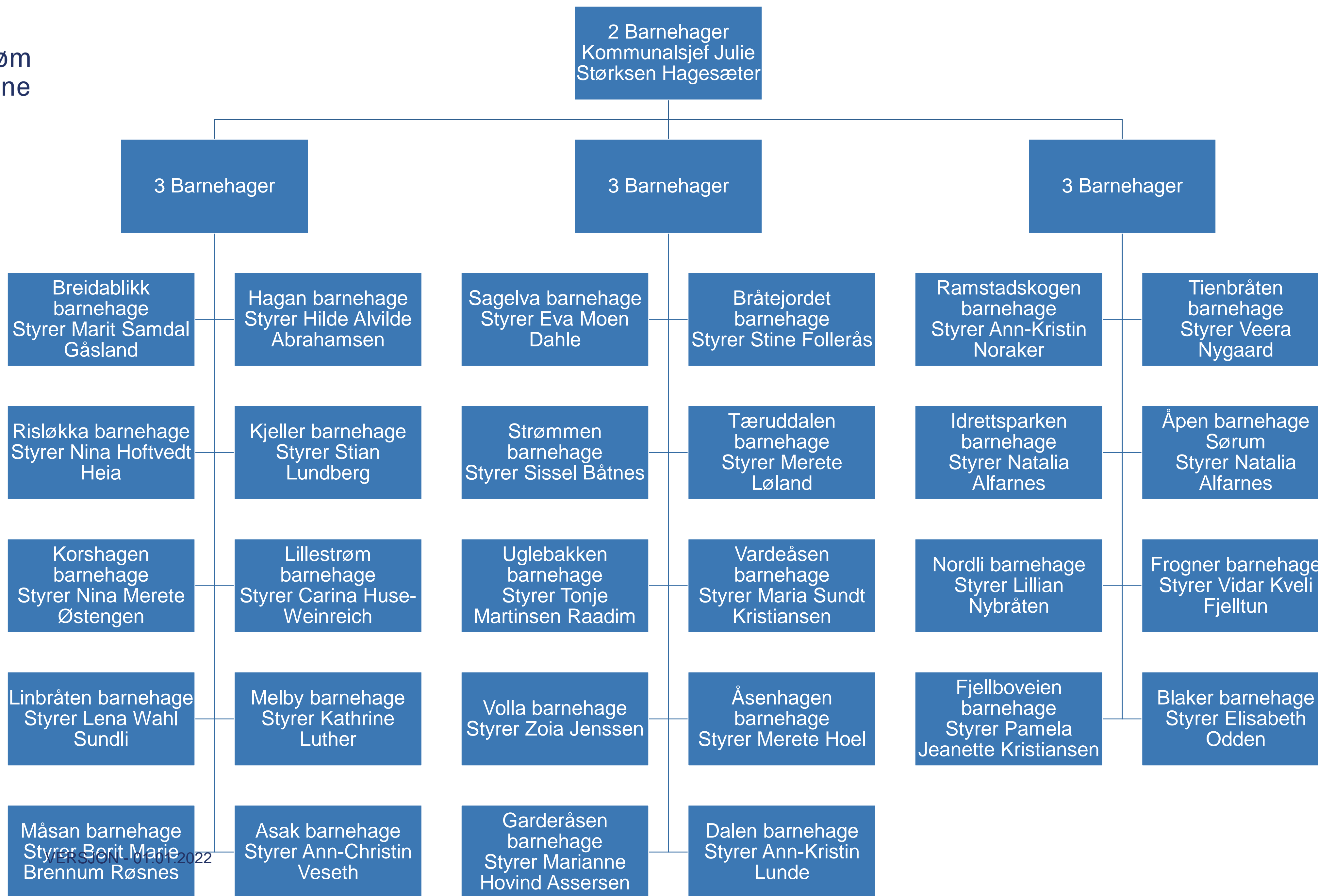
Lillestrøm
kommune

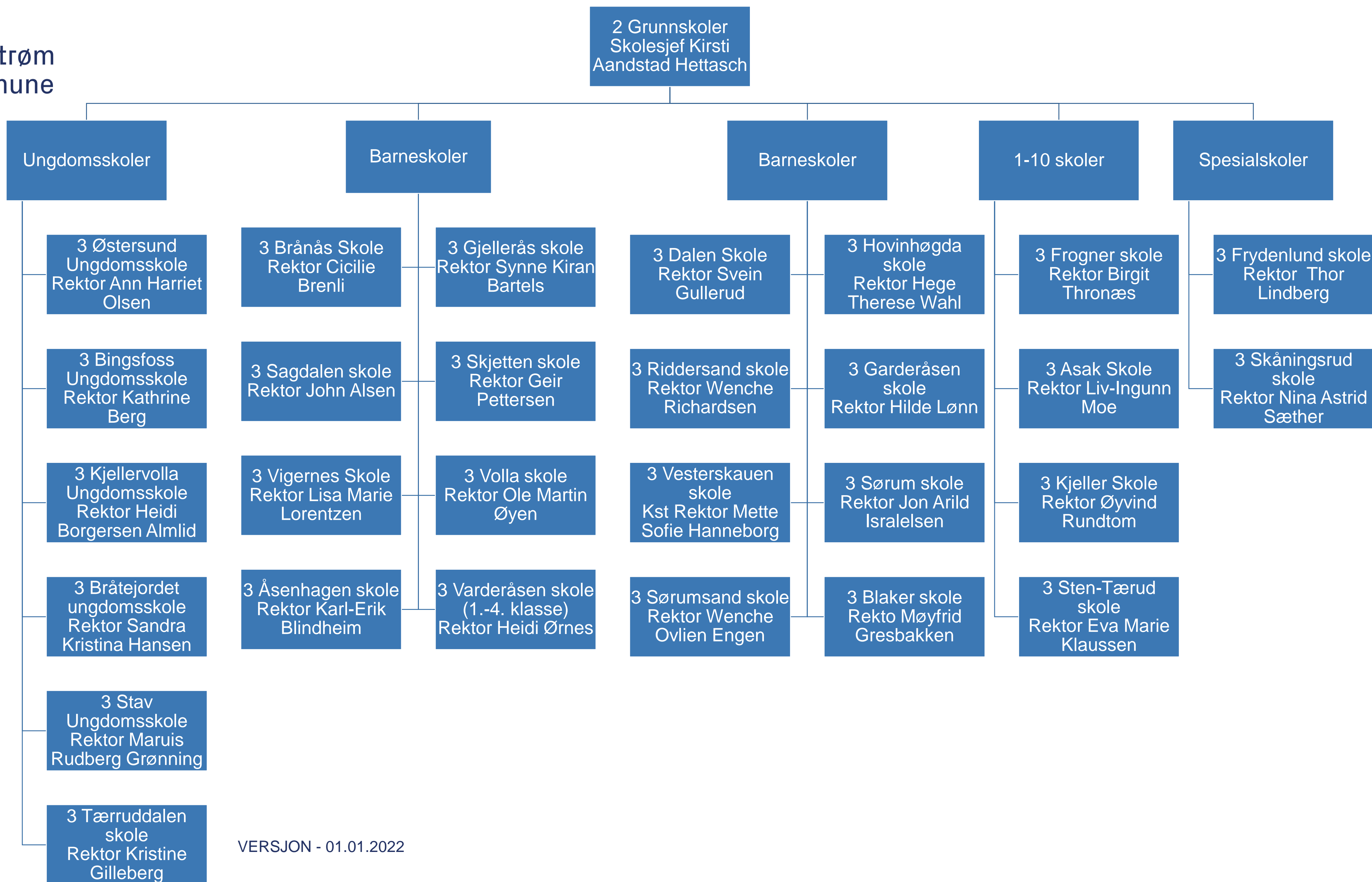
Oppvekst

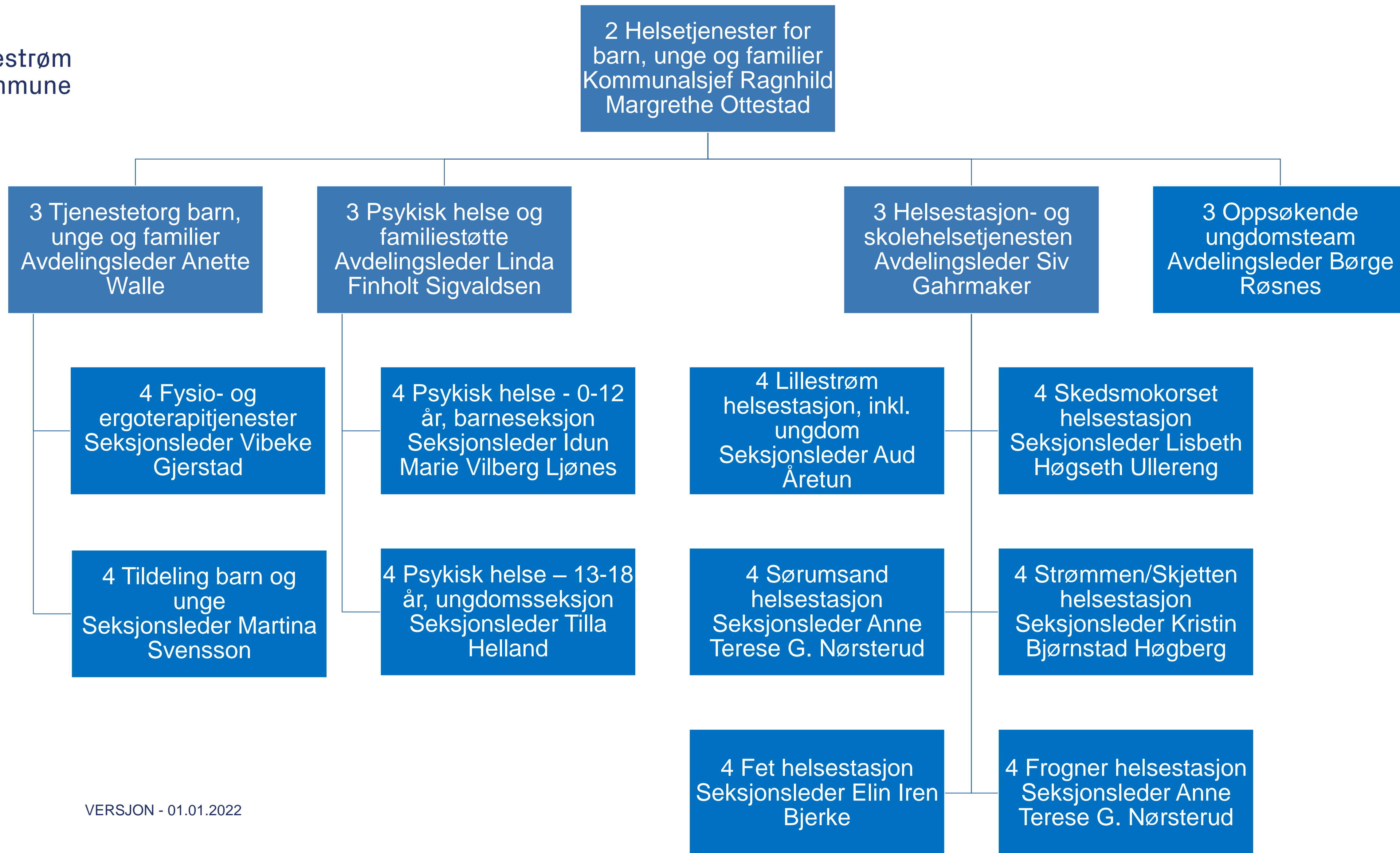


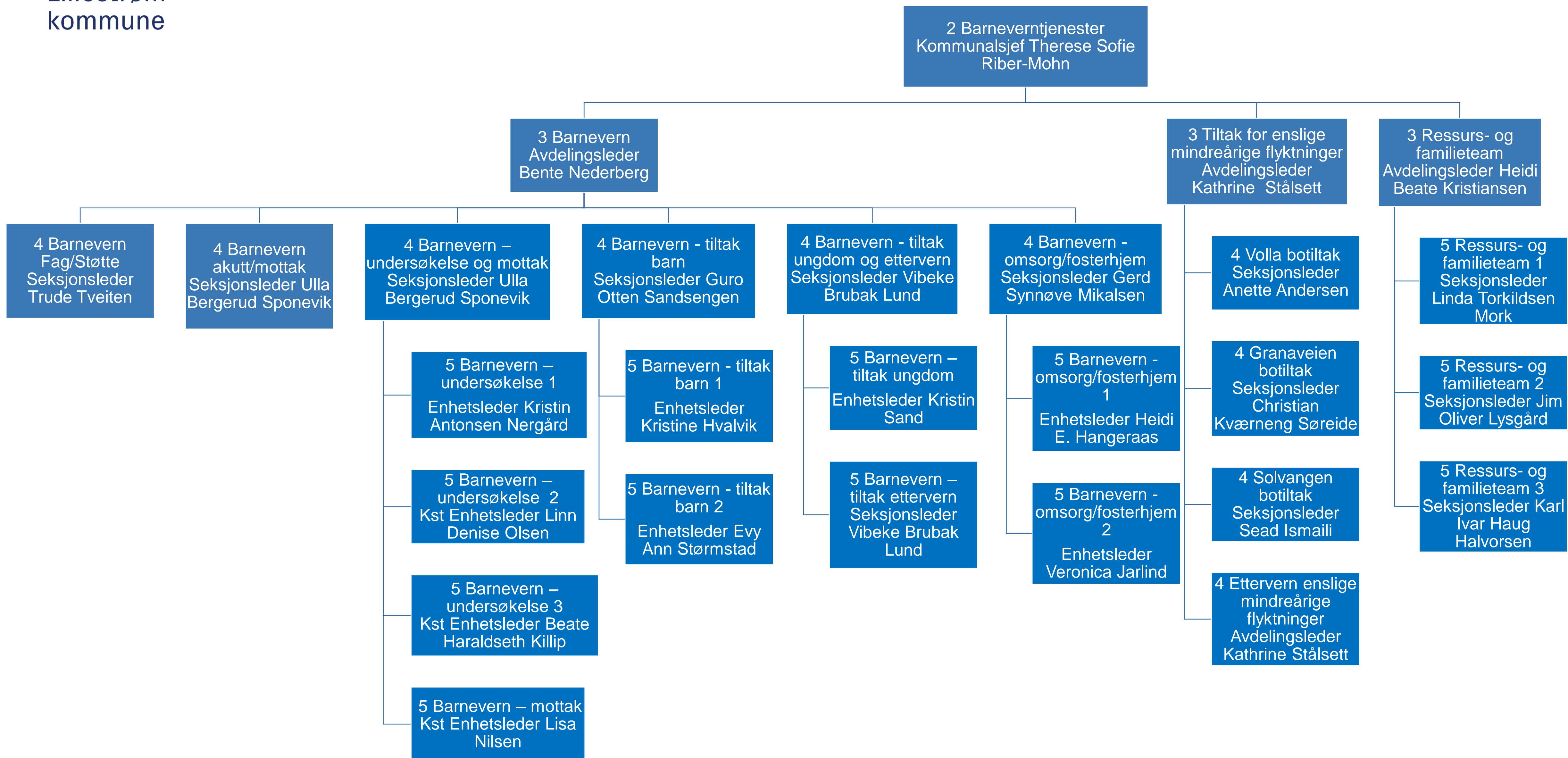
Lillestrøm
kommune







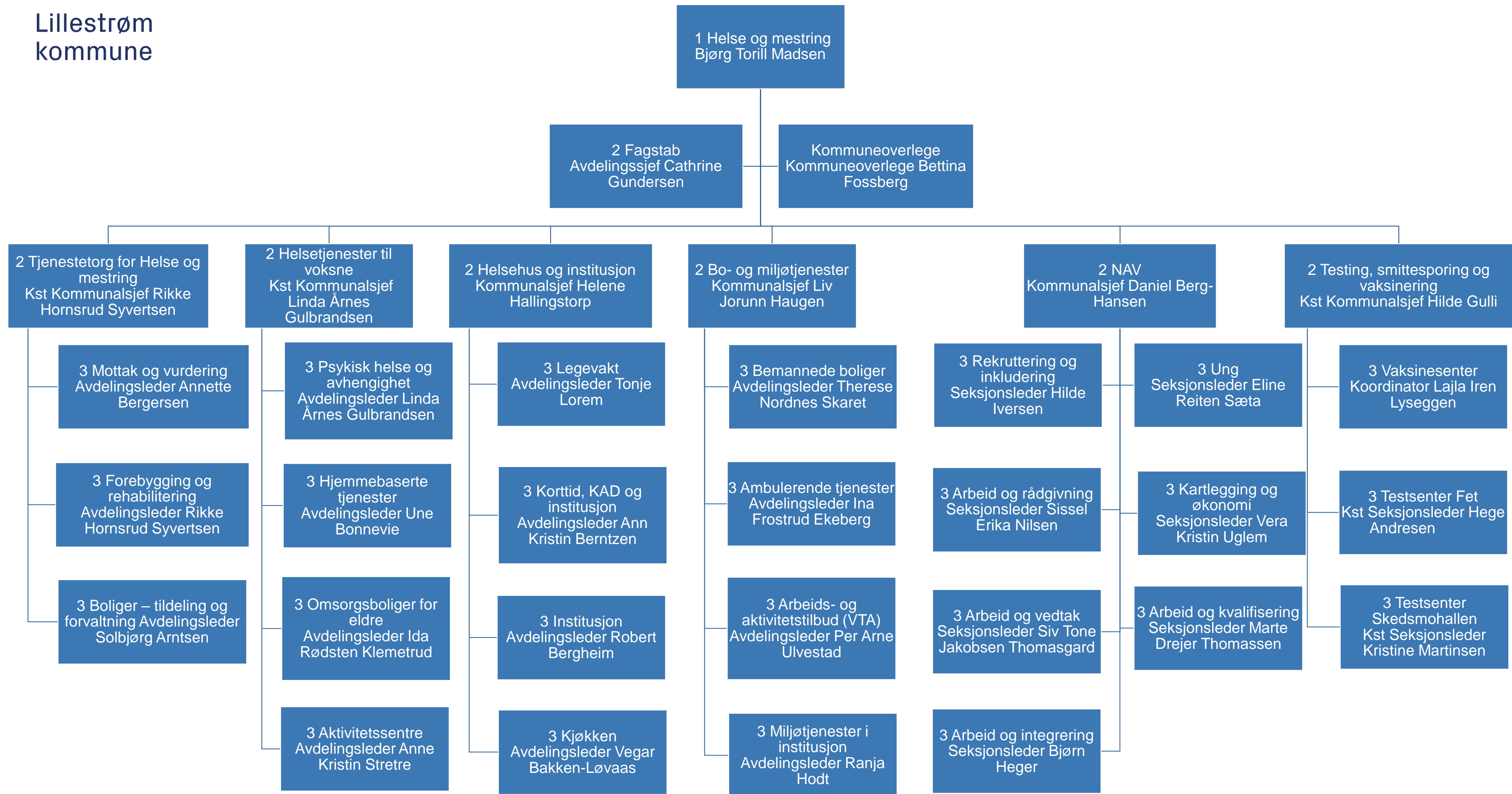


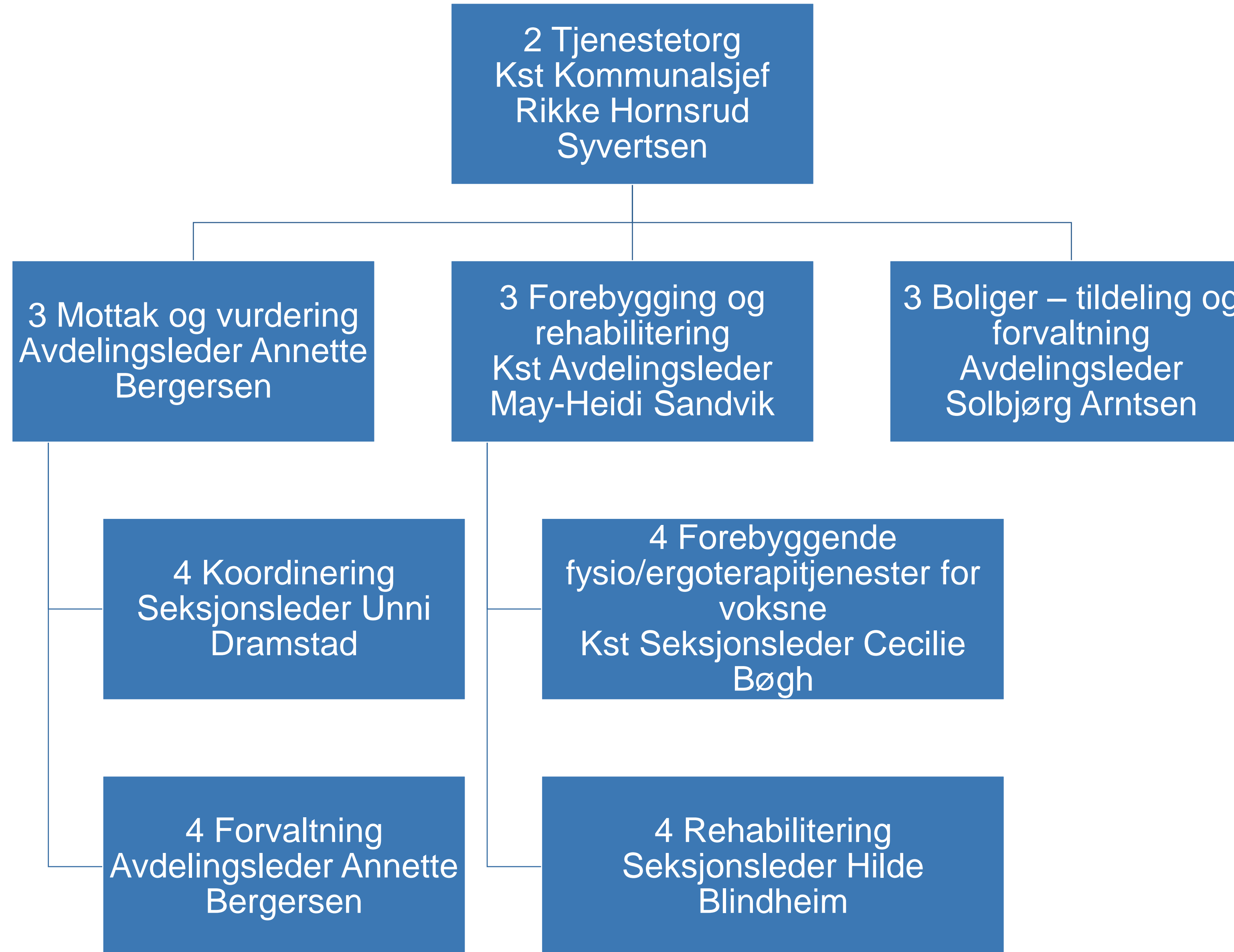


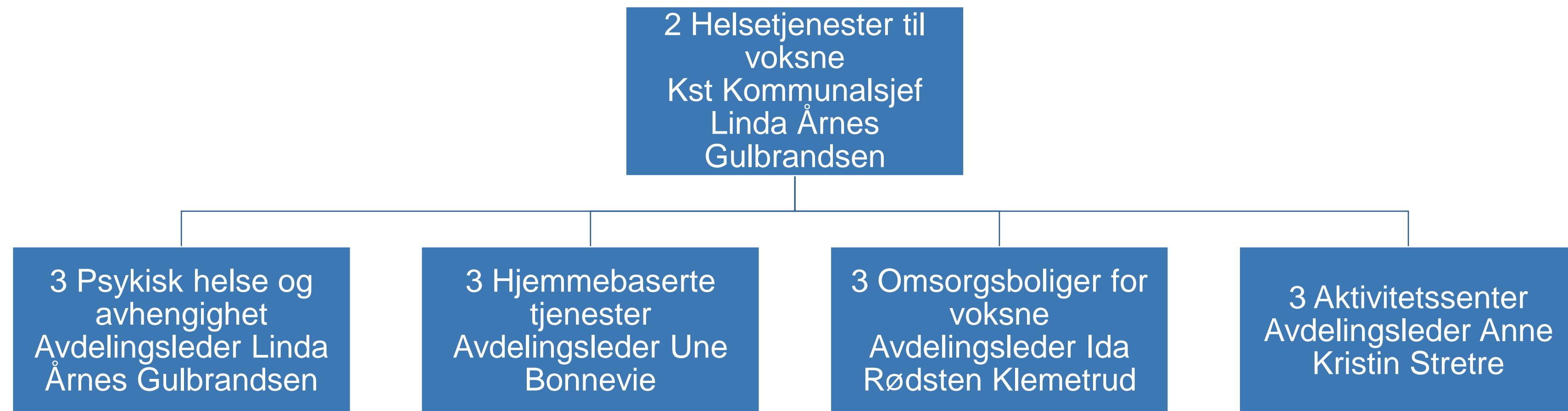
Lillestrøm
kommune

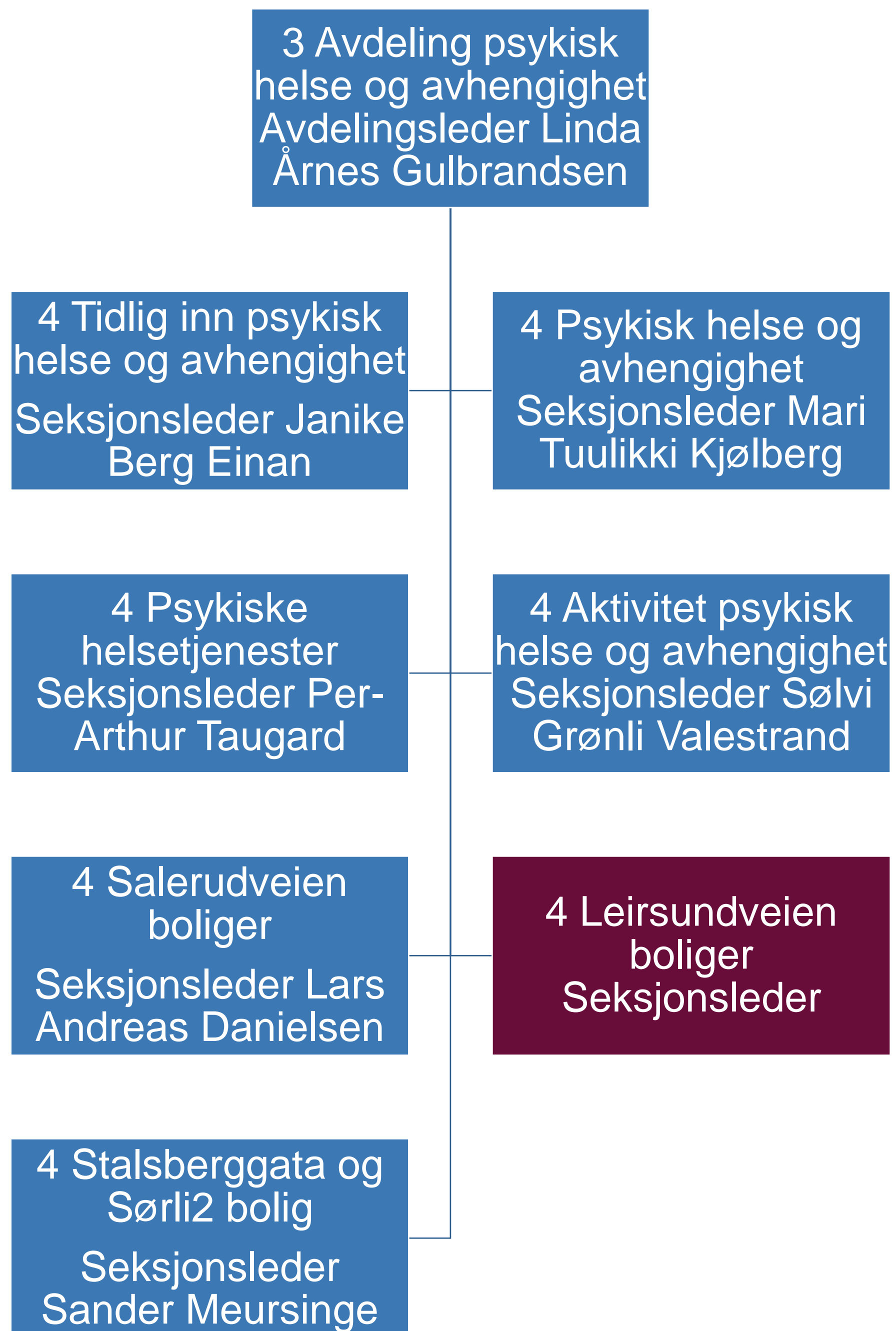
Helse og mestring

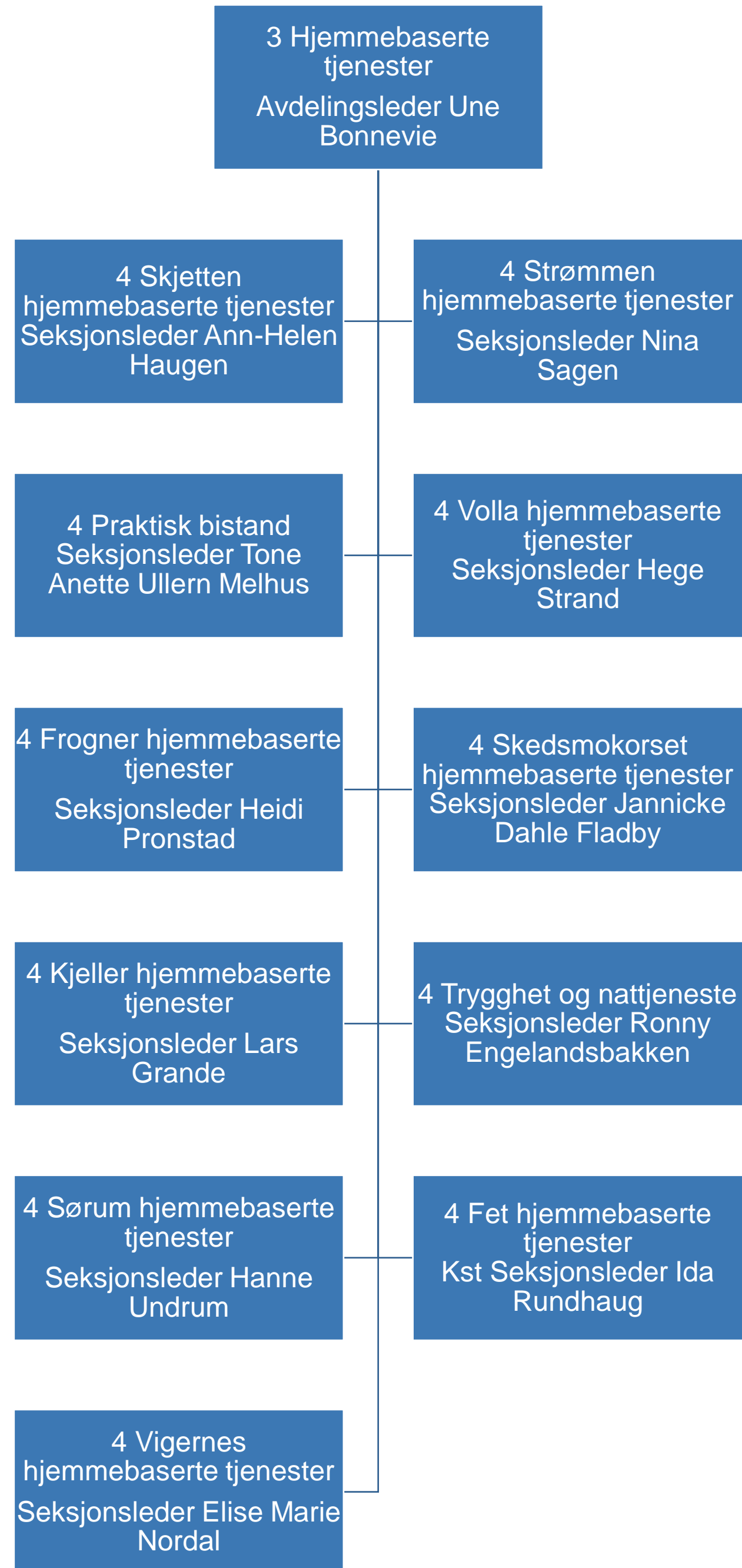


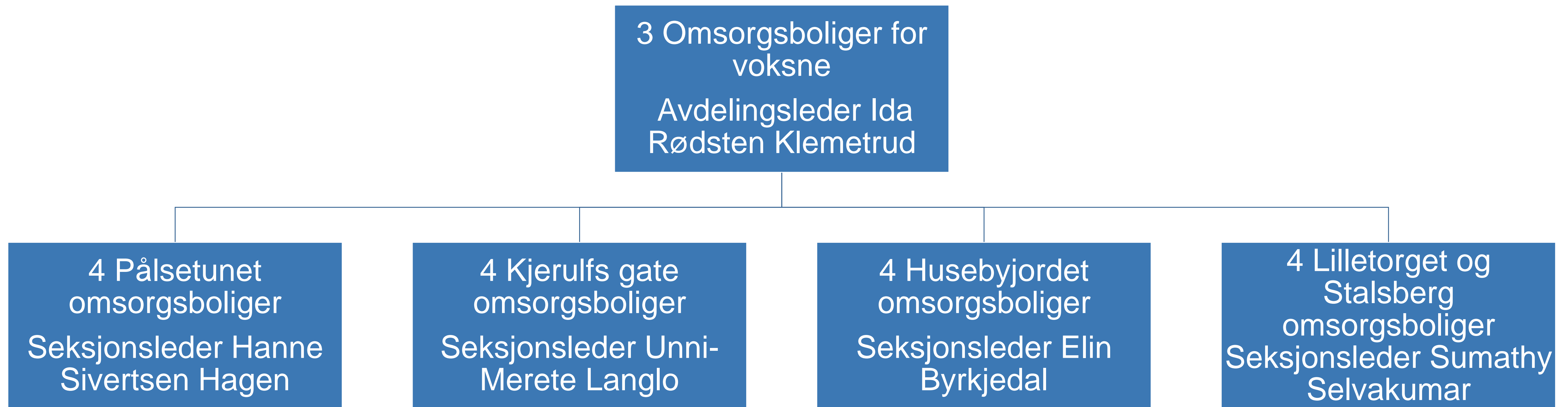


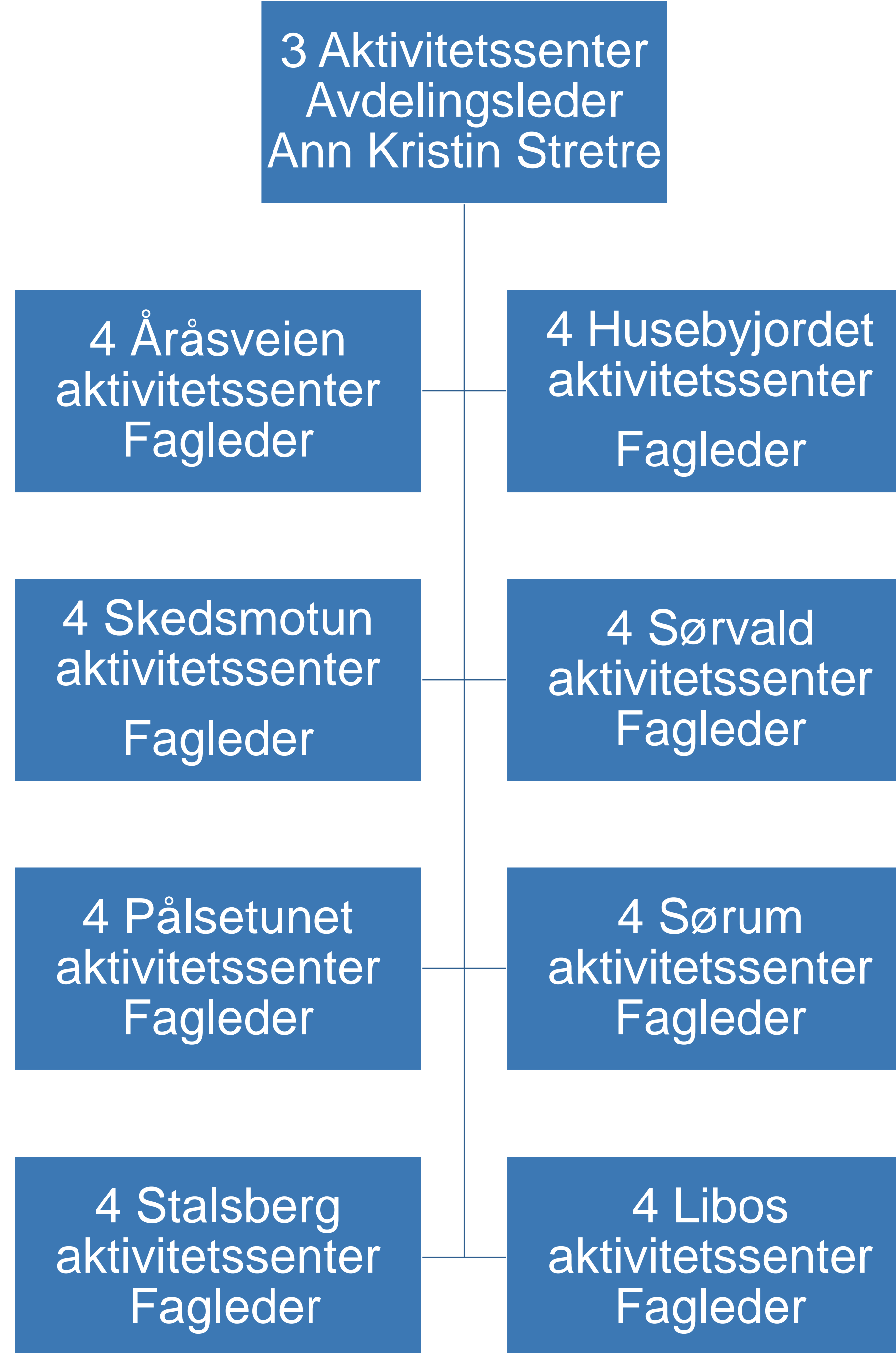




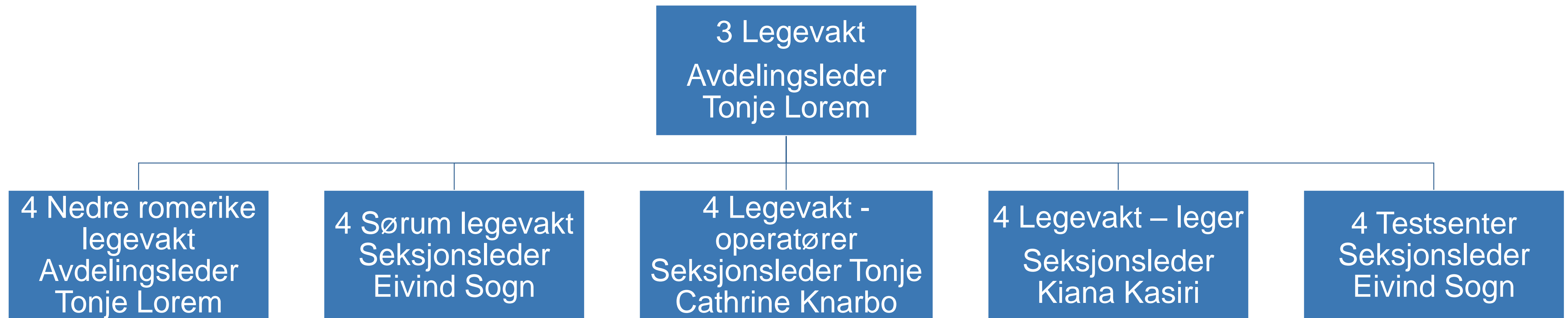


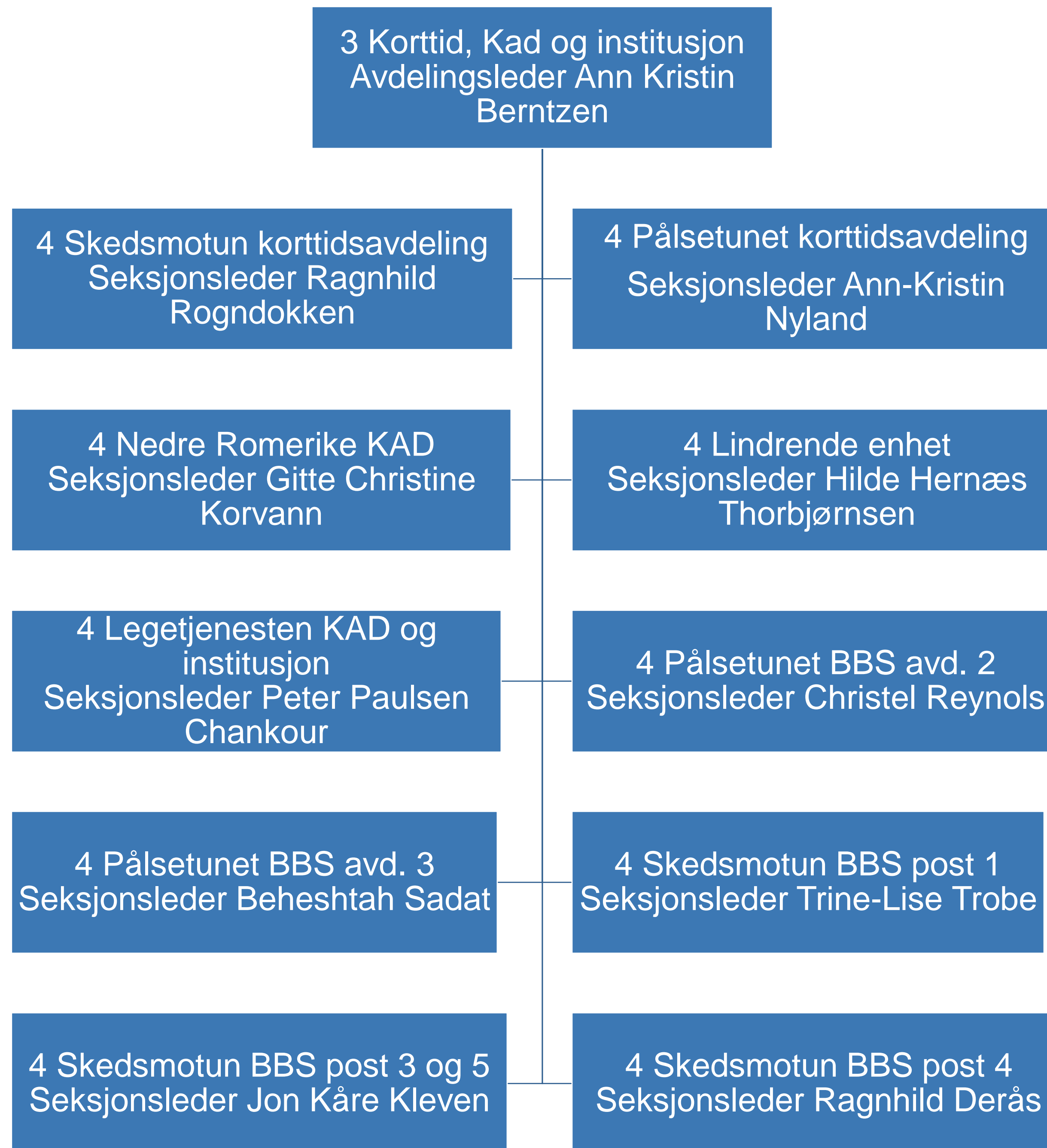


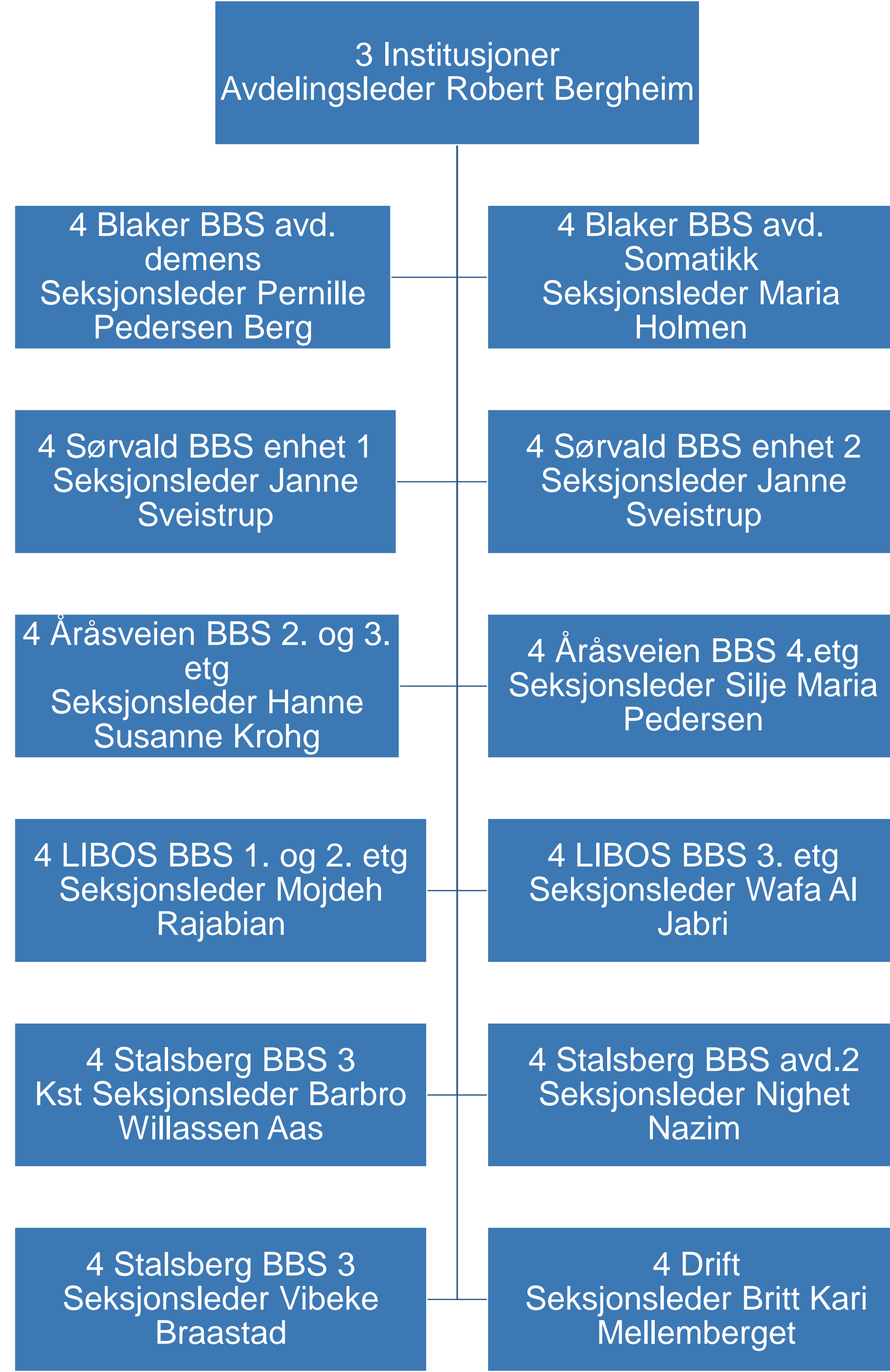


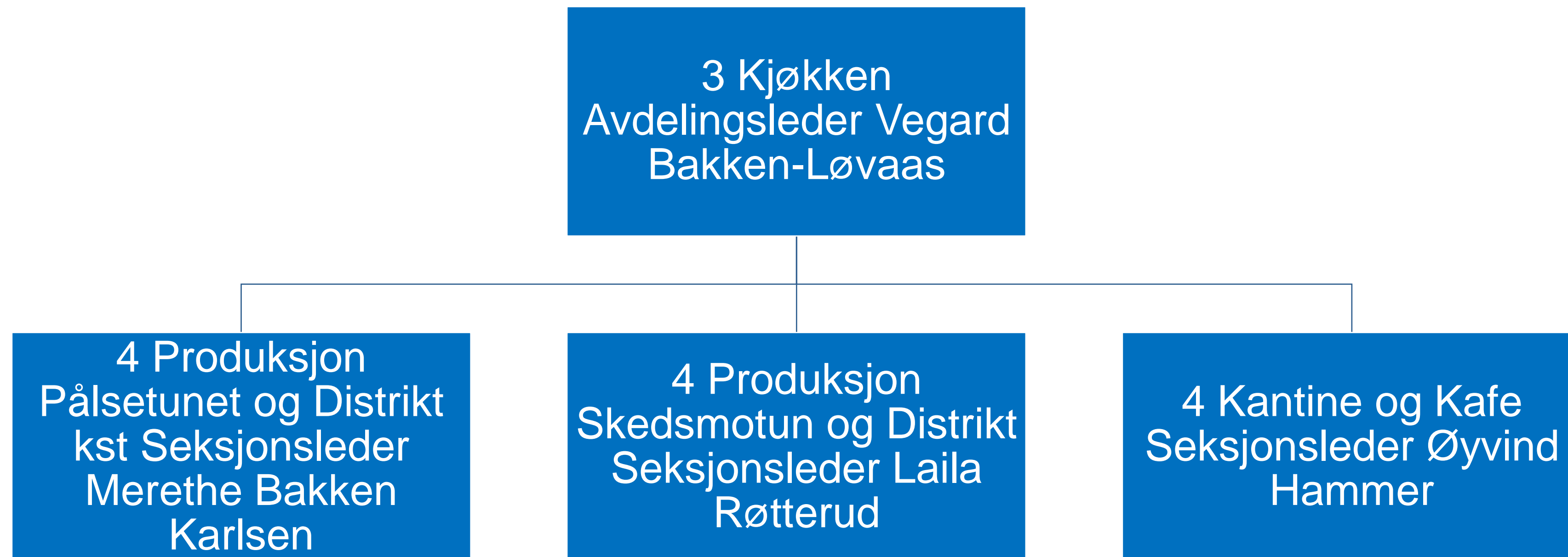


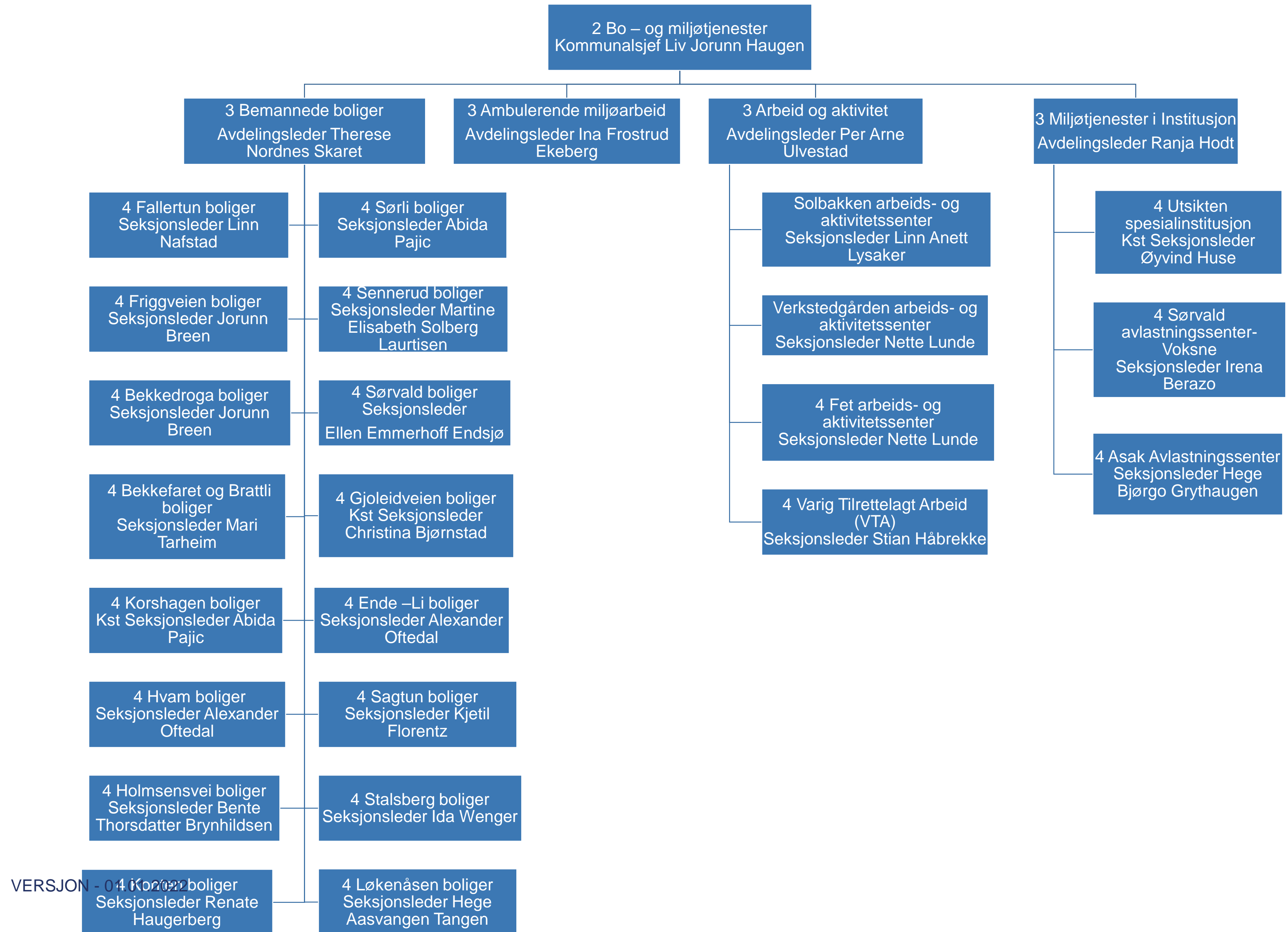














Lillestrøm
kommune

Kultur, miljø og samfunn



